

# DURDEN & HUNT

INTERNATIONAL



## Sunnymede, Chigwell IG7

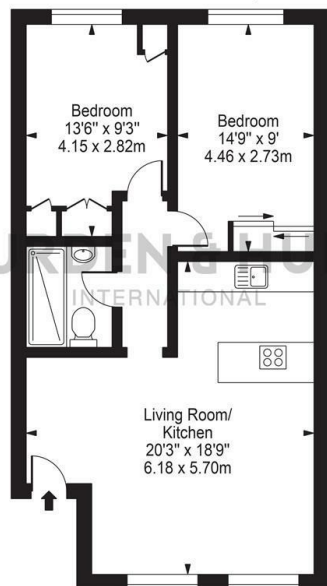
Offers Over £350,000

- Modern And Stylish Apartment
- Allocated Parking Space
- Private And Sought After Development
- Large Bathroom With Walk In Shower
- Open Plan Living Room And Kitchen
- Great Location

309 High Road, Loughton, Essex, IG10 1AL  
0203 026 0160

[loughton@durdenandhunt.co.uk](mailto:loughton@durdenandhunt.co.uk)  
<https://www.durdenandhunt.co.uk/>

# Foxburrows Court, Sunnymede Approx. Gross Internal Area 644 Sq Ft - 59.79 Sq M



Ground Floor

For Illustration Purposes Only - Not To Scale

This floor plan should be used as a general outline for guidance only and does not constitute in whole or in part an offer or contract. Any intending purchaser or lessee should satisfy themselves by inspection, searches, enquiries and full survey as to the correctness of each statement. Any areas, measurements or distances quoted are approximate and should not be used to value a property or be the basis of any sale or let.

## Viewings

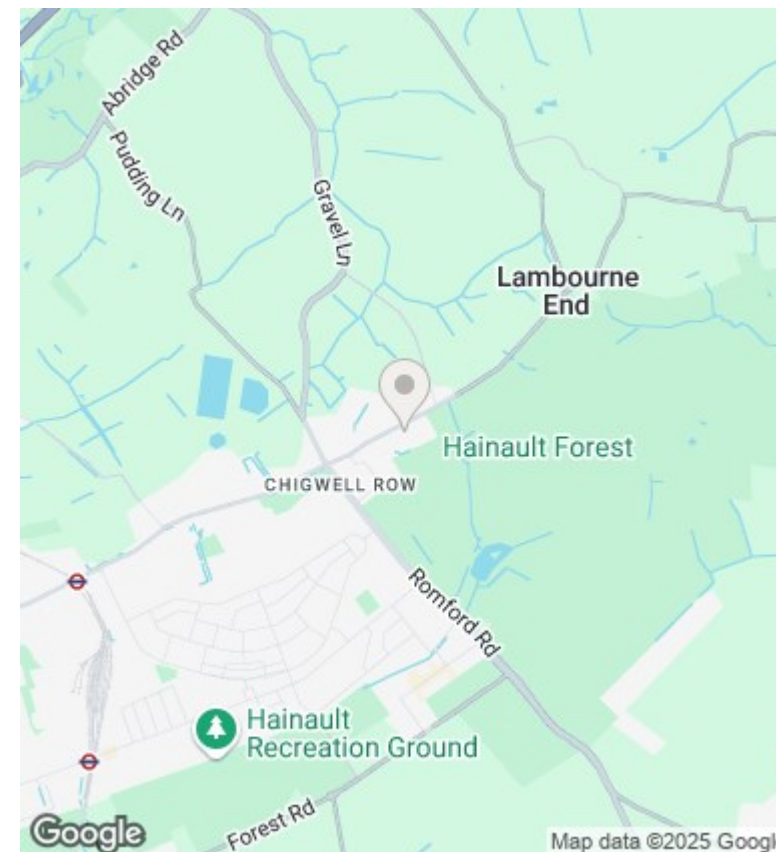
Viewings by arrangement only. Call 0203 026 0160 to make an appointment.

## Council Tax Band

D

## EPC Rating:

B



Energy Efficiency Rating		
	Current	Potential
Very energy efficient - lower running costs		
(92 plus) <b>A</b>		
(81-91) <b>B</b>	<b>81</b>	<b>81</b>
(69-80) <b>C</b>		
(55-68) <b>D</b>		
(39-54) <b>E</b>		
(21-38) <b>F</b>		
(1-20) <b>G</b>		
Not energy efficient - higher running costs		
<b>England &amp; Wales</b>	EU Directive 2002/91/EC	