

DURDEN & HUNT

INTERNATIONAL



Beverley Crescent, Woodford Green IG8

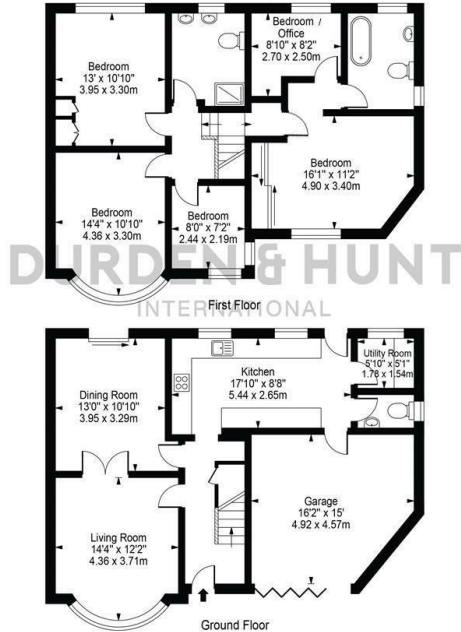
Offers In Excess Of £900,000

- Five Bedroom Home
- Garage
- Through Living And Dining Room
- Excellent Transport Links
- Good Condition Throughout
- Good Sized Garden
- Two Family Bathrooms
- Off Road Parking For Multiple Cars
- Modern Kitchen With Separate Utility
- Downstairs WC

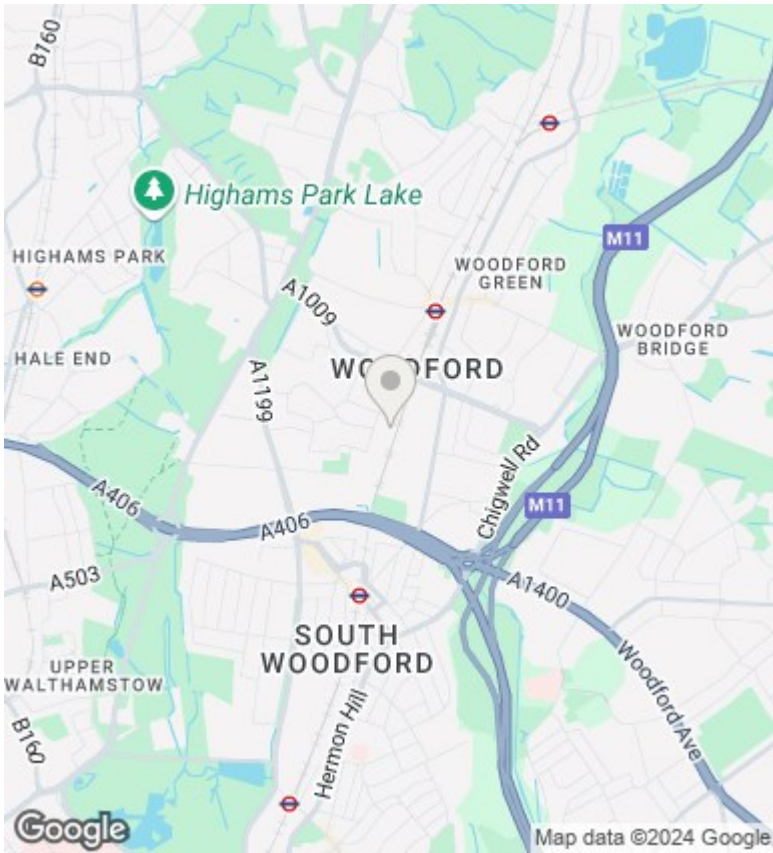
309 High Road, Loughton, Essex, IG10 1AL
0203 026 0160

loughton@durdenandhunt.co.uk
<https://www.durdenandhunt.co.uk/>

Beverley Crescent
 Approx. Total Internal Area 1707 Sq Ft - 158.60 Sq M
 (Including Garage)
 Approx. Gross Internal Area Of Garage 216 Sq Ft - 20.07 Sq M



For Illustration Purposes Only - Not To Scale
 This floor plan should be used as a general outline for guidance only and does not constitute in whole or in part an offer or contract.
 Any intending purchaser or lessee should satisfy themselves by inspection, searches, enquiries and full survey as to the correctness of each statement.
 Any areas, measurements or distances quoted are approximate and should not be used to value a property or be the basis of any sale or let.



Viewings

Viewings by arrangement only. Call 0203 026 0160 to make an appointment.

Council Tax Band

E

EPC Rating:

D

Energy Efficiency Rating		Current	Potential
<i>Very energy efficient - lower running costs</i>			
(92 plus) A			
(81-91) B			
(69-80) C			
(55-68) D		65	78
(39-54) E			
(21-38) F			
(1-20) G			
<i>Not energy efficient - higher running costs</i>			
England & Wales		EU Directive 2002/91/EC	