

DURDEN & HUNT

INTERNATIONAL



Foxburrows Court, Sunnymede, Chigwell IG7

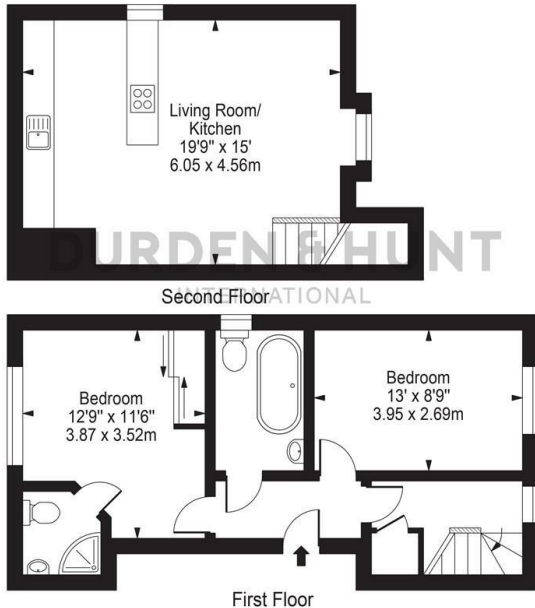
Offers In Excess Of £350,000

- Split Level Apartment
- Additional Bedroom
- Excellent Transport Links
- Spacious Open Plan Kitchen And Living Room
- Family Bathroom
- Master Bedroom With En Suite And Fitted Wardrobes
- Allocated Parking

309 High Road, Loughton, Essex, IG10 1AL
0203 026 0160

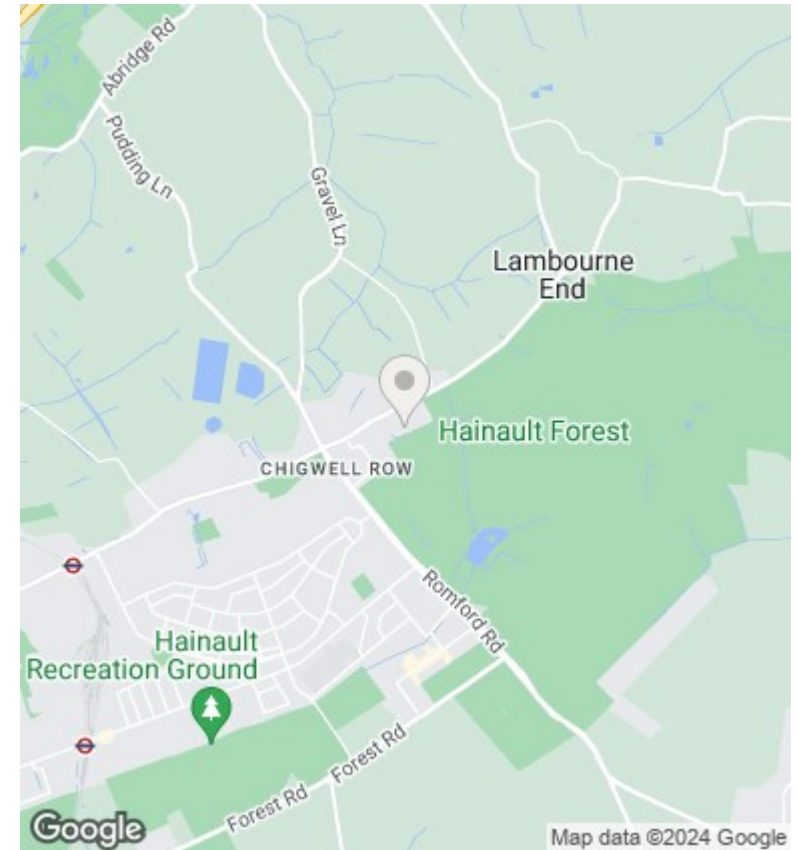
loughton@durdenandhunt.co.uk
<https://www.durdenandhunt.co.uk/>

Foxburrows Court
 Approx. Gross Internal Area 759 Sq Ft - 70.54 Sq M



For Illustration Purposes Only - Not To Scale

This floor plan should be used as a general outline for guidance only and does not constitute in whole or in part an offer or contract. Any intending purchaser or lessee should satisfy themselves by inspection, searches, enquiries and full survey as to the correctness of each statement. Any areas, measurements or distances quoted are approximate and should not be used to value a property or be the basis of any sale or let.



Viewings

Viewings by arrangement only. Call 0203 026 0160 to make an appointment.

Council Tax Band

D

EPC Rating:

Energy Efficiency Rating		
	Current	Potential
<i>Very energy efficient - lower running costs</i>		
(92 plus) A		
(81-91) B		
(69-80) C		
(55-68) D		
(39-54) E		
(21-38) F		
(1-20) G		
<i>Not energy efficient - higher running costs</i>		
England & Wales	EU Directive 2002/91/EC	