

# DURDEN & HUNT

INTERNATIONAL



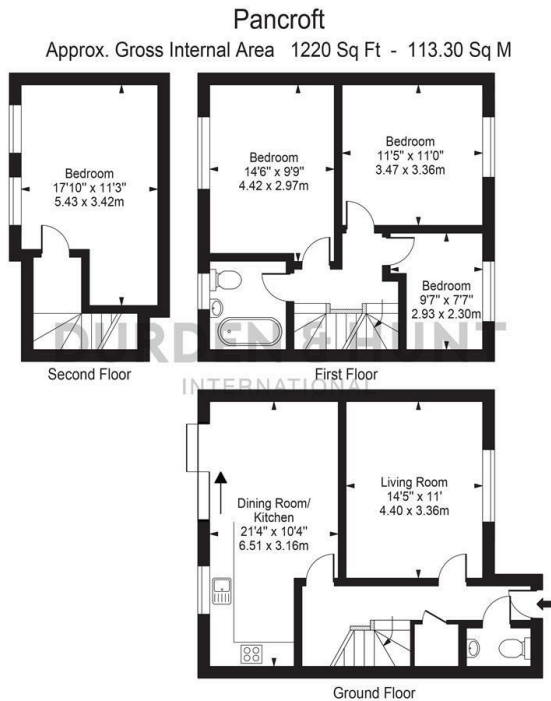
## Pancroft, Abridge RM4

£525,000

- New Build House
- Modern Open Plan Kitchen
- Chain Free
- Abridge Village Location
- Reception Room
- New Build Warranty
- Four Bedrooms
- Solar Panels
- Downstairs WC

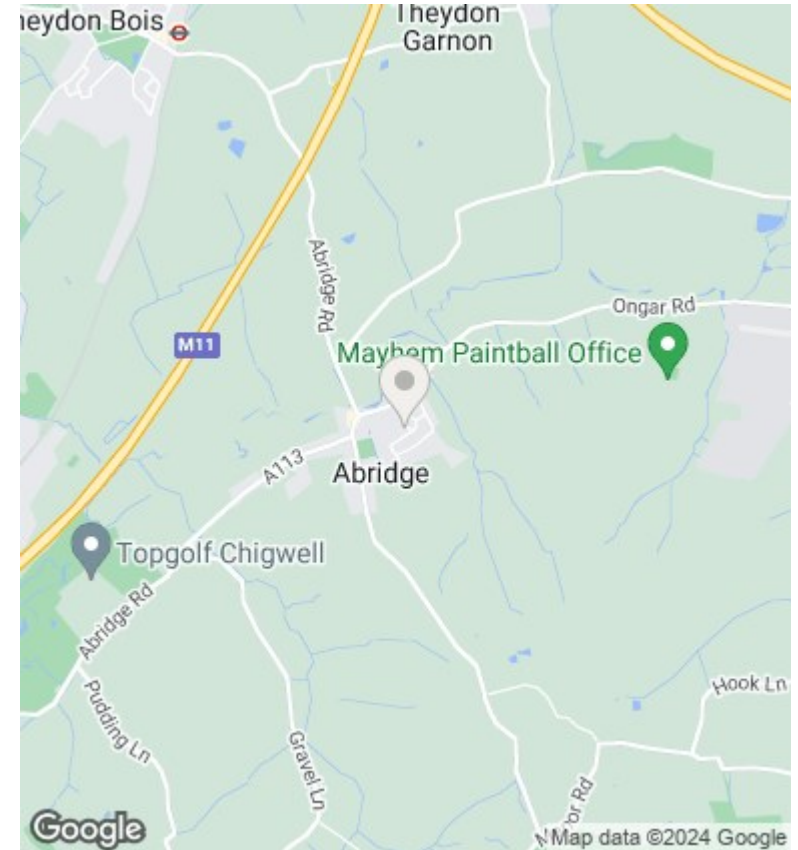
309 High Road, Loughton, Essex, IG10 1AL  
0203 026 0160

[loughton@durdenandhunt.co.uk](mailto:loughton@durdenandhunt.co.uk)  
<https://www.durdenandhunt.co.uk/>



For Illustration Purposes Only - Not To Scale

This floor plan should be used as a general outline for guidance only and does not constitute in whole or in part an offer or contract. Any intending purchaser or lessee should satisfy themselves by inspection, searches, enquiries and full survey as to the correctness of each statement. Any areas, measurements or distances quoted are approximate and should not be used to value a property or be the basis of any sale or let.



## Viewings

Viewings by arrangement only. Call 0203 026 0160 to make an appointment.

## Council Tax Band

New Build

EPC Rating:

B

| Energy Efficiency Rating                           |  | Current                 | Potential |
|--|--|-------------------------|-----------|
| <i>Very energy efficient - lower running costs</i> |  |                         |           |
| (92 plus) <b>A</b>                                 |  |                         |           |
| (81-91) <b>B</b>                                   |  | 84                      | 84        |
| (69-80) <b>C</b>                                   |  |                         |           |
| (55-68) <b>D</b>                                   |  |                         |           |
| (39-54) <b>E</b>                                   |  |                         |           |
| (21-38) <b>F</b>                                   |  |                         |           |
| (1-20) <b>G</b>                                    |  |                         |           |
| <i>Not energy efficient - higher running costs</i> |  |                         |           |
| <b>England &amp; Wales</b>                         |  | EU Directive 2002/91/EC |           |