

# DURDEN & HUNT

INTERNATIONAL



## Hamlet House, Five Oaks Lane, Chigwell IG7

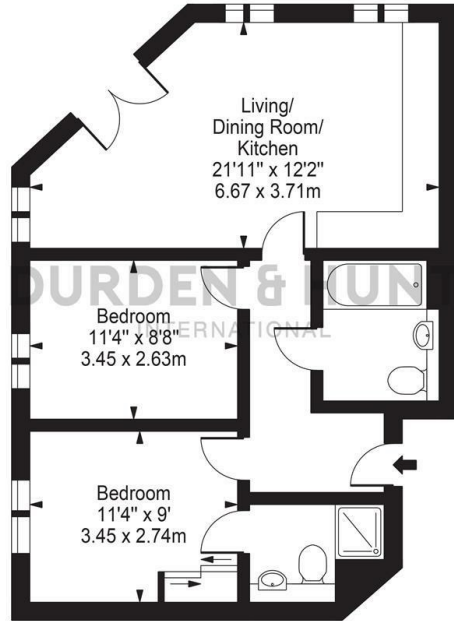
£345,000

- Spacious Open Plan Living, Dining And Kitchen Area
- Family Bathroom
- Master Bedroom With En Suite And Fitted Wardrobes
- Allocated Parking
- Additional Bedroom
- Excellent Transport Links

309 High Road, Loughton, Essex, IG10 1AL  
0203 026 0160

[loughton@durdenandhunt.co.uk](mailto:loughton@durdenandhunt.co.uk)  
<https://www.durdenandhunt.co.uk/>

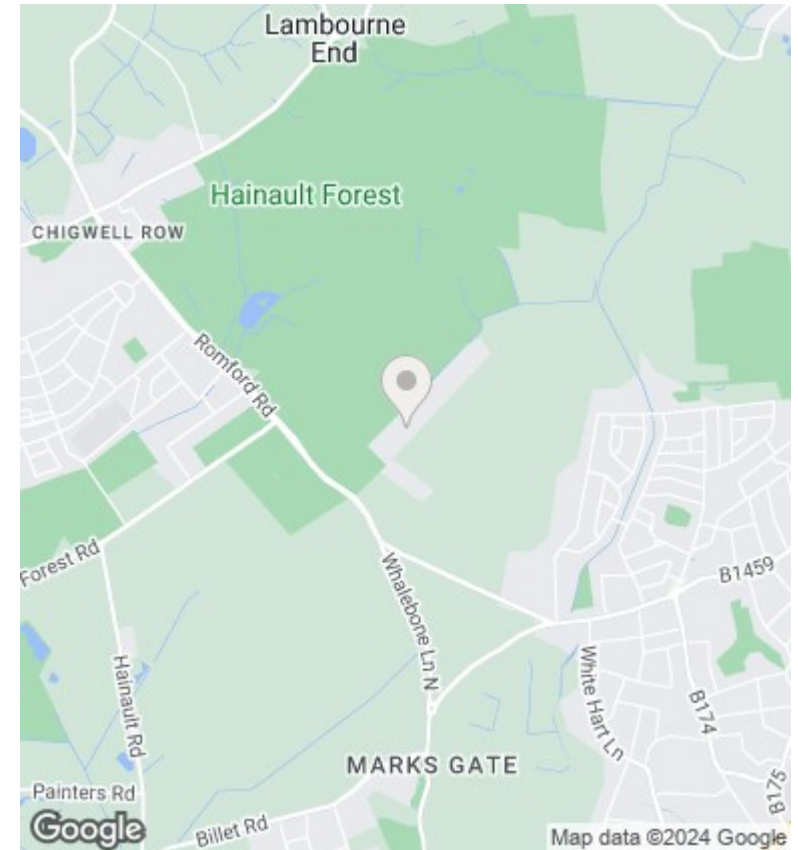
**Hamlet House**  
 Approx. Gross Internal Area 611 Sq Ft - 56.74 Sq M



**Ground Floor**

For Illustration Purposes Only - Not To Scale

This floor plan should be used as a general outline for guidance only and does not constitute in whole or in part an offer or contract. Any intending purchaser or lessee should satisfy themselves by inspection, searches, enquiries and full survey as to the correctness of each statement. Any areas, measurements or distances quoted are approximate and should not be used to value a property or be the basis of any sale or let.



**Viewings**

Viewings by arrangement only. Call 0203 026 0160 to make an appointment.

**Council Tax Band**

C

**EPC Rating:**

B

| Energy Efficiency Rating                           |  | Current                 | Potential |
|--|--|-------------------------|-----------|
| <i>Very energy efficient - lower running costs</i> |  |                         |           |
| (92 plus) <b>A</b>                                 |  |                         |           |
| (81-91) <b>B</b>                                   |  | 84                      | 84        |
| (69-80) <b>C</b>                                   |  |                         |           |
| (55-68) <b>D</b>                                   |  |                         |           |
| (39-54) <b>E</b>                                   |  |                         |           |
| (21-38) <b>F</b>                                   |  |                         |           |
| (1-20) <b>G</b>                                    |  |                         |           |
| <i>Not energy efficient - higher running costs</i> |  |                         |           |
| <b>England &amp; Wales</b>                         |  | EU Directive 2002/91/EC |           |