

# DURDEN & HUNT

INTERNATIONAL



## Rosebury Square, Woodford Green IG8

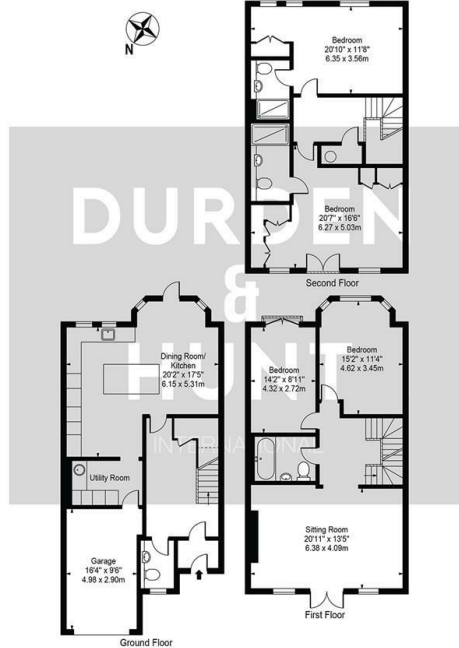
Offers In Excess Of £1,050,000

- Immaculate Condition
- Large Modern Open Plan Kitchen And Dining Area
- Four Bedrooms, Two With En Suites
- Luxury Living Room
- Downstairs WC And Family Bathroom
- Private Balcony
- Garden
- Garage And Off Road Parking
- Prestigious Location
- Excellent Transport Links

309 High Road, Loughton, Essex, IG10 1AL  
0203 026 0160

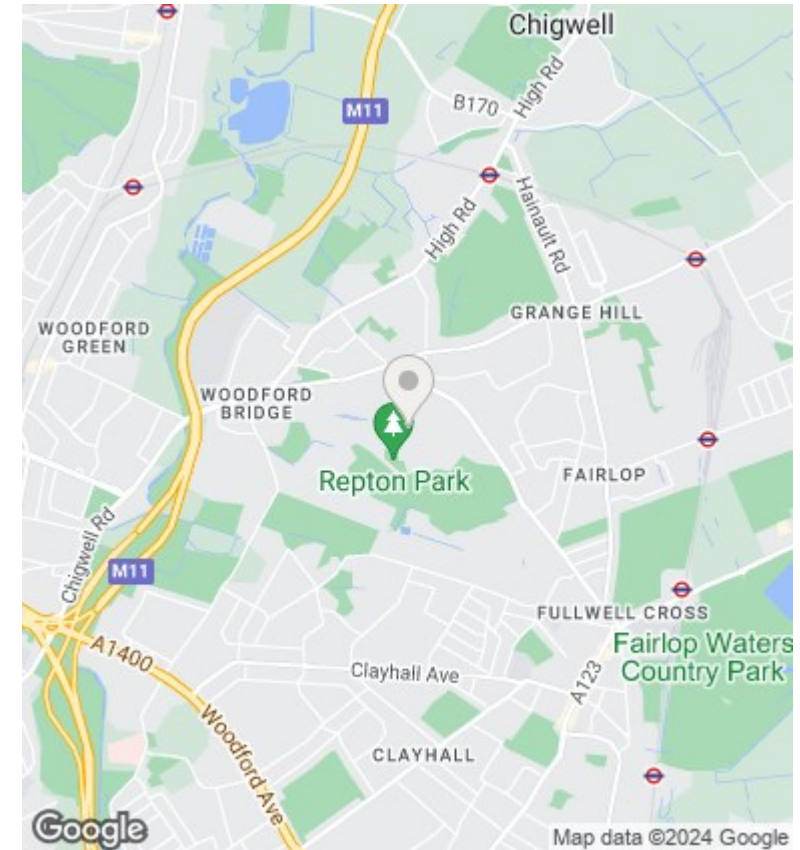
[loughton@durdenandhunt.co.uk](mailto:loughton@durdenandhunt.co.uk)  
<https://www.durdenandhunt.co.uk/>

**Rosebury Square**  
 Approx. Total Internal Area 2255 Sq Ft - 209.50 Sq M  
 (Including Garage)  
 Approx. Gross Internal Area Of Garage 157 Sq Ft - 14.59 Sq M



For Illustration Purposes Only - Not To Scale

This floor plan should be used as a general outline for guidance only and does not constitute in whole or in part an offer or contract. Any intending purchaser or lessee should satisfy themselves by inspection, searches, enquiries and full survey as to the correctness of each statement. Any areas, measurements or distances quoted are approximate and should not be used to value a property or be the basis of any sale or let.



## Viewings

Viewings by arrangement only. Call 0203 026 0160 to make an appointment.

## Council Tax Band

G

## EPC Rating:

C

Energy Efficiency Rating		Current	Potential
<i>Very energy efficient - lower running costs</i>			
(92 plus) <b>A</b>			
(81-91) <b>B</b>		76	83
(69-80) <b>C</b>			
(55-68) <b>D</b>			
(39-54) <b>E</b>			
(21-38) <b>F</b>			
(1-20) <b>G</b>			
<i>Not energy efficient - higher running costs</i>			
<b>England &amp; Wales</b>		EU Directive 2002/91/EC	