



Tithe Barn Close, St Albans



**Guide price £800,000**



## Key Features

- Detached House
- Four Bedrooms
- Modern Kitchen
- South Facing Rear Garden
- Large Garage
- Large Conservatory
- Close to Excellent Schools
- Close to Transport Links



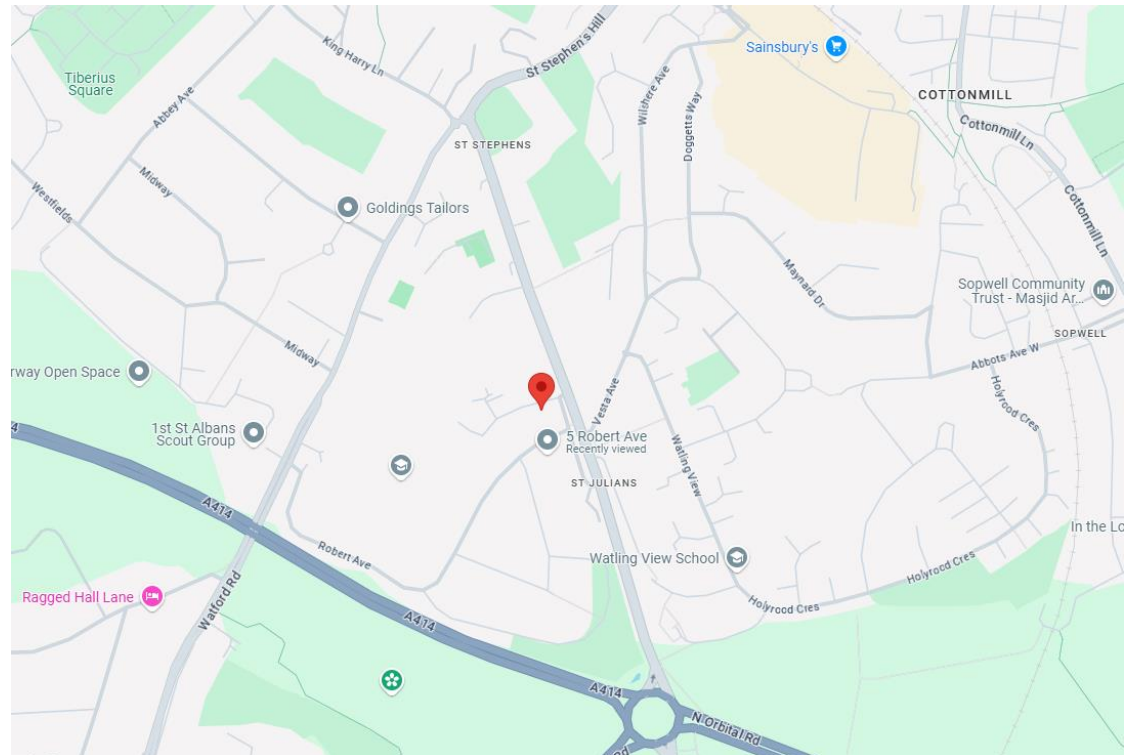




A very well presented 4 bedroom detached family home to the south side of St Albans with easy access to the A414, M1 and M25 and close to excellent schools.

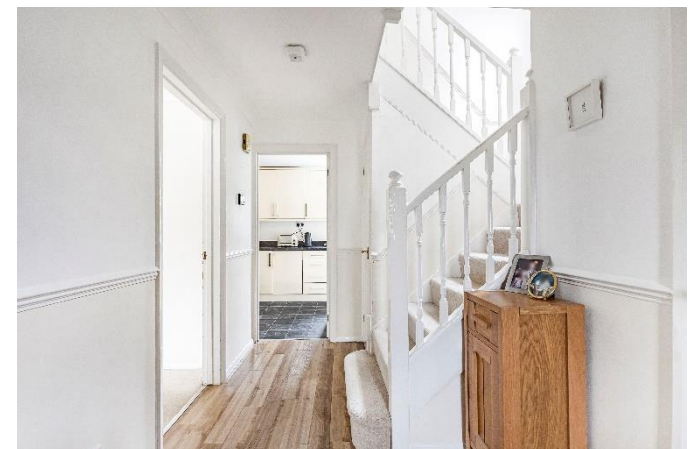
The property comprises bright and airy lounge, separate dining room, kitchen with appliances and a beautifully bright conservatory with access from the dining room. Upstairs there are three double bedrooms, one single bedroom and a bathroom with shower over bath. Other features include well maintained south facing rear garden with patio and shed storage, garage and downstairs W/C with shower.

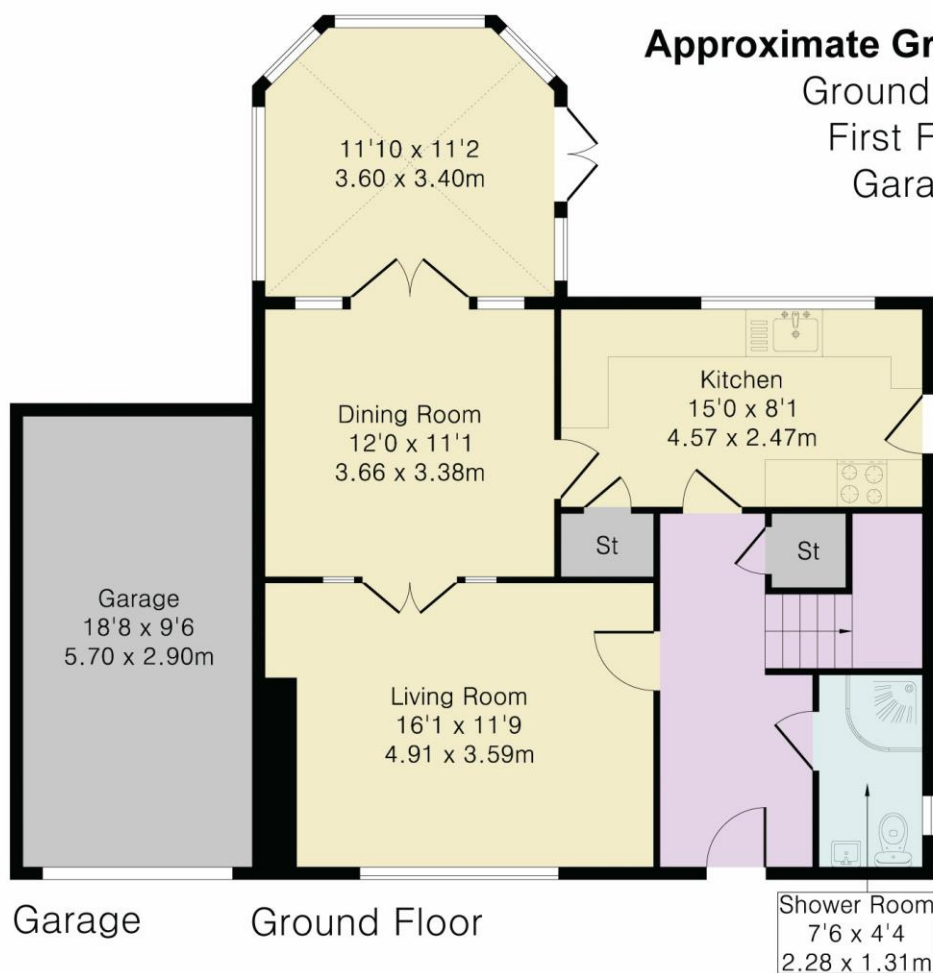
Tithe Barn Close is a small cul-de-sac consisting of detached homes. It is situated on the South side of the city and enjoys immediate access to motorway links and well regarded primary and secondary schools including the Marlborough Science academy









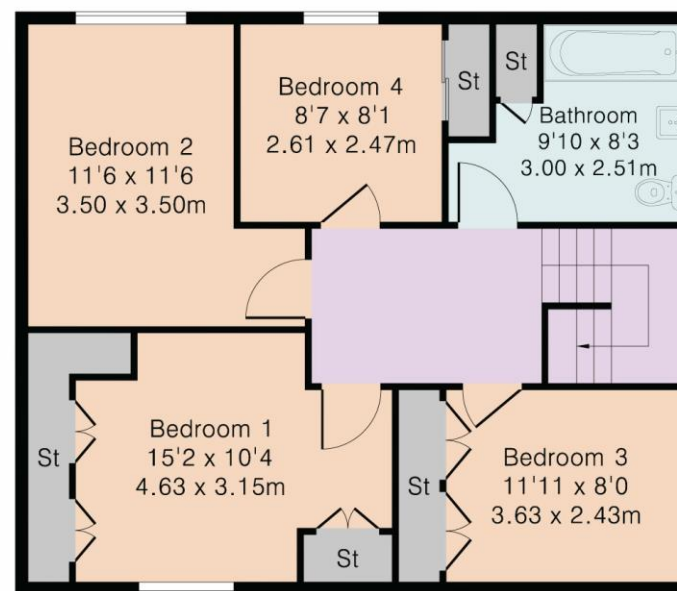


**Approximate Gross Internal Area 1573 sq ft - 147 sq m**

Ground Floor Area 764 sq ft – 71 sq m

First Floor Area 631 sq ft – 59 sq m

Garage Area 178 sq ft – 17 sq m



First Floor

Disclosure: These details are intended to give a fair description only and their accuracy cannot be guaranteed nor are any floor plans (if included) exactly to scale. These details do not constitute part of any offer or contract and are not to be relied upon as statements of representation or fact. Intended purchasers are advised to recheck all measurements before committing to any expense and to verify the legal title of the property from their legal representative. Any contents shown in the images contained within these particulars will not be included in the sale unless otherwise stated or following individual negotiations with the vendor. Northwood have not tested any apparatus, equipment, fixtures, or services so cannot confirm that they are in working order and the property is sold on this basis.

