



MARBLE PLACE

SHOPPING CENTRE, SOUTHPORT

Located on Southport's prime retail pitch
An enclosed shopping centre on a pedestrianised location
Potential to combine units to create space required

Suitable for E occupiers – subject to planning permission
400 sq ft to 4,500 sq ft available
www.marbleplace.co.uk



Southport is a popular and affluent seaside town approximately 17 miles north of Liverpool and 42 miles north-west of Manchester.

Marble Place is situated in the heart of Southport town centre forming part of the primary retail core. The scheme benefits from direct access onto the pedestrianised Tulketh Street and Chapel Street which forms part of the prime retail pitch.

Southport Railway Station is situated a short distance from the scheme and can be accessed from both Tulketh Street and Chapel Street. Marble Place benefits from a number of car parks within close proximity notably two large NCP car parks on Tulketh Street.

There is a strong retail offer in the town with nearby occupiers including Marks & Spencer, WHSmith, Primark, Sports Direct and Boots.

The central position of Marble Place, the excellent accessibility as well as the 30,000 sq ft TK Maxx anchor store ensures a constant footfall to the centre. Other national retailers within the scheme include Three, Regis, Poundbakery, Savers

Opportunities are available from 400 sq ft to 4,500 sq ft with the flexibility to work to occupier requirements. Please contact us for more information, layout plans and to discuss suitable unit options.

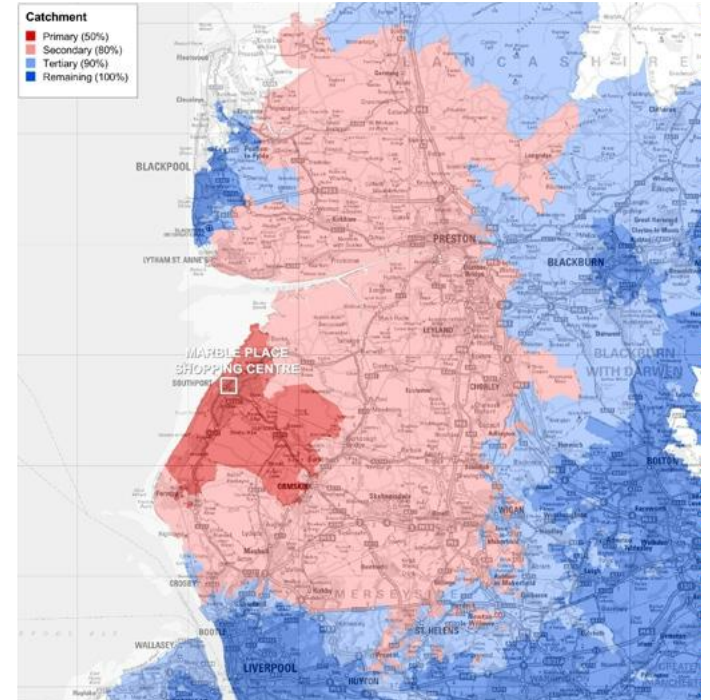




Southport has an above average spend per capita on both comparison and RW goods.



Southport has a total population within its primary catchment of 268,000 and an estimated shopping population of 51,000. (Promis)



3 new lettings in the last 12 months



The levels of home and car ownership within Southport are also well above average.



Southport contains an above average proportion of working aged adults within the most affluent AB social group.



CONTACT

Stephen Henderson

shenderson@savills.com

0113 220 1206

Jamie Ng

James.ng@savills.com

07977 030164

Cerys Davies

cerys@fittonestates.com

01704 500345

Important Notice:

Savills, their clients and any joint agents give notice that:

1. They are not authorised to make or give any representations or warranties in relation to the property either here or elsewhere, either on their own behalf or on behalf of their client or otherwise. They assume no responsibility for any statement that may be made in these particulars. These particulars do not form part of any offer or contract and must not be relied upon as statements or representations of fact.
2. Any areas, measurements or distances are approximate. The text, photographs and plans are for guidance only and are not necessarily comprehensive. It should not be assumed that the property has all necessary planning, building regulation or other consents and Savills have not tested any services, equipment or facilities. Purchasers must satisfy themselves by inspection or otherwise.

Designed and Produced by Savills Commercial Marketing: 020 7499 8644 | September 2019



MARBLE PLACE
SHOPPING CENTRE, SOUTHPORT

www.marbleplace.co.uk