

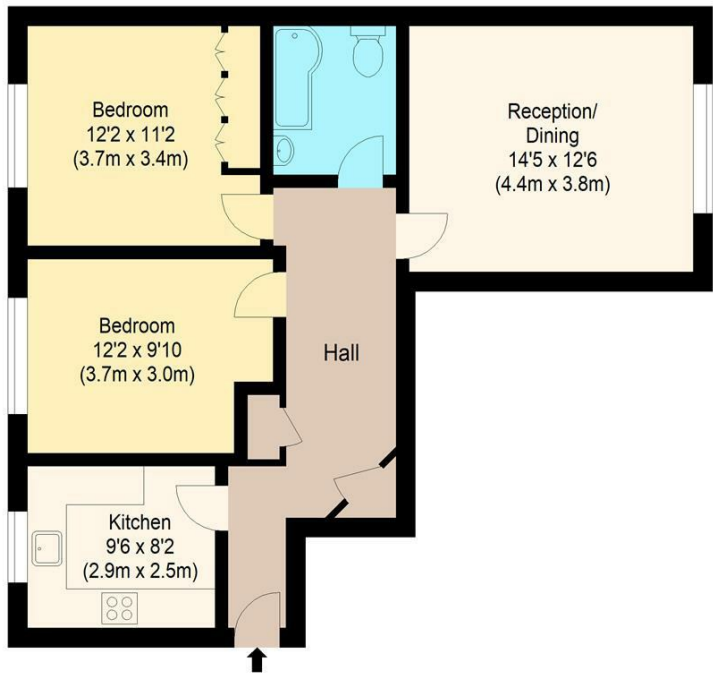
Directions

Viewings

Viewings by arrangement only. Call 02085042440 to make an appointment.

EPC Rating

Energy Efficiency Rating		
	Current	Potential
Very energy efficient - lower running costs		
(92 plus) A		
(81-91) B		
(69-80) C		
(55-68) D		
(39-54) E		
(21-38) F		
(1-20) G		
Not energy efficient - higher running costs		
England & Wales		
EU Directive 2002/91/EC		



First Floor

william rose
Barnes Court, IG8

Approximate Gross Internal Floor Area : 67.63 sq m / 728 sq ft



4 Barnes Court Durham Avenue, Woodford Green, IG8 7NJ

£1,700 Per Month

- 2 Bedroom flat
- Walking distance to station
- Recently redecarated
- Lift access
- Unfurnished
- Spacious throughout
- Gated parking
- Long term let
- Sought after location
- Water bills included

4 Barnes Court Durham Avenue, Woodford Green IG8

7NII

This charming two-bedroom apartment on Durham Avenue, located in the desirable Woodford Green area, offers a perfect blend of comfort and convenience. Spanning 732 square feet, it features a spacious reception room flooded with natural light, two peaceful bedrooms, and a well-appointed bathroom. Built in 1960, the property retains character while providing modern amenities. Ideally situated near local amenities, parks, and transport links, this apartment presents an excellent opportunity for those seeking a comfortable home in a vibrant community.

 2

 1

 1



Council Tax Band: C



Nestled in the charming area of Woodford Green, this delightful two-bedroom apartment on Durham Avenue offers a perfect blend of comfort and convenience. Spanning an impressive 732 square feet, this well-proportioned residence is ideal tenants seeking a welcoming home.

Upon entering, you are greeted by a spacious reception room that provides an inviting space for relaxation and entertaining. The natural light that floods this area creates a warm and airy atmosphere, making it a perfect spot to unwind after a long day. The apartment features two comfortable bedrooms, each offering a peaceful retreat for rest and rejuvenation. The property comes with gated parking.

The well-appointed bathroom is designed with functionality in mind, catering to your everyday needs. The property, built in 1960, boasts a character that reflects its era while still providing the modern conveniences expected in today's living spaces.

Situated in a desirable location, this apartment benefits from the tranquil surroundings of Woodford Green, with local amenities, parks, and transport links just a stone's throw away. Whether you are looking to enjoy leisurely strolls in the nearby green spaces or take advantage of the vibrant community, this property is perfectly positioned to offer a balanced lifestyle.

In summary, this charming apartment on Durham Avenue presents an excellent opportunity for those seeking a comfortable and conveniently located home in Woodford Green. With its spacious layout and inviting atmosphere, it is sure to appeal to a variety of buyers or renters alike.

Redbridge Council Tax Band - C
EPC - C
Leasehold

All the information provided about this property does not constitute or form part of an offer or contract, nor maybe it be regarded as representations. All interested parties must verify accuracy and your solicitor must verify tenure/lease

information, fixtures & fittings and, where the property has been extended/converted, planning/building regulation consents. All dimensions are approximate and quoted for guidance only as are floor plans which are not to scale, and their accuracy cannot be confirmed. Reference to appliances and/or services does not imply that they are necessarily in working order or fit for the purpose