

The Buckminster

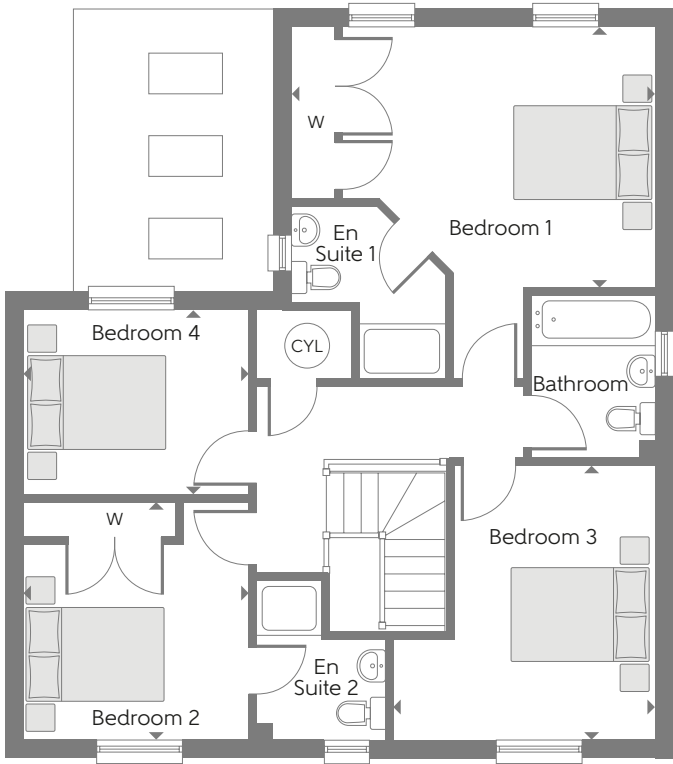
Four bedroom home



Bellway Homes Limited (East Midlands Division)
3 Romulus Court, Meridian East, Meridian Business Park,
Braunstone Town, Leicester LE19 1YG

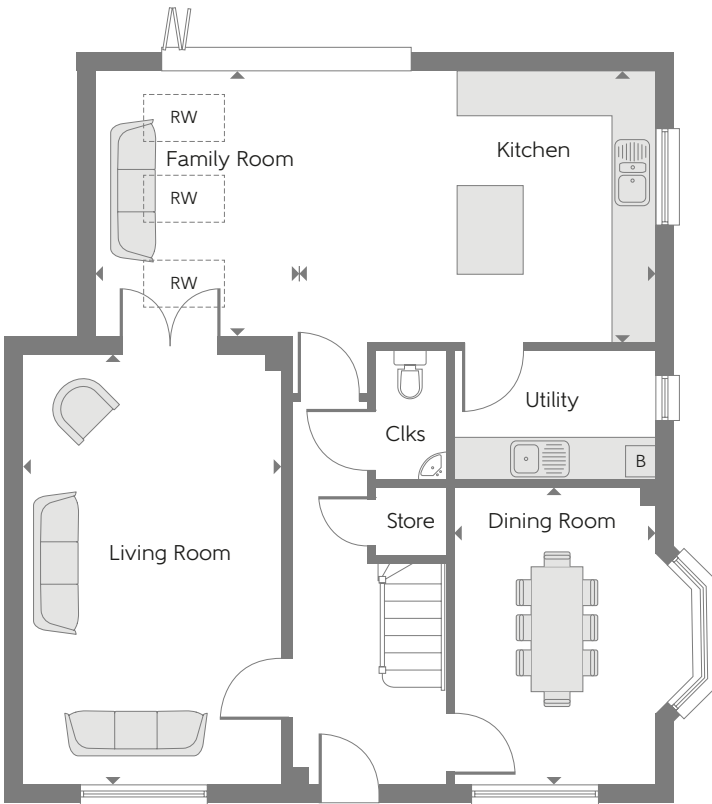
Telephone: 0116 282 0408
www.bellway.co.uk

Bellway



First Floor

Bedroom 1	5.044m x 3.622m (max) (max)	16'5" x 11'9" (max) (max)
Bedroom 2	3.312m x 3.138m (max) (max)	10'9" x 10'3" (max) (max)
Bedroom 3	3.807m x 3.644m (max) (max)	12'5" x 11'10" (max) (max)
Bedroom 4	2.560m x 3.138m (max) (max)	8'4" x 10'3" (max) (max)



Ground Floor

Kitchen	5.044m x 3.775m (max) (max)	16'5" x 11'9" (max) (max)
Family Room	3.585m x 2.738m (max) (max)	10'9" x 10'4" (max) (max)
Living Room	5.971m x 3.590m (max) (max)	19'6" x 11'8" (max) (max)
Dining Room	4.096m x 2.800m (max) (max)	13'4" x 9'2" (max) (max)

► Indicates where dimensions are taken from

B Boiler **Clks** Cloakroom **W** Fitted Wardrobe **CYL** Hot Water Cylinder **RW** Roof Window

Some items shown in this key may be subject to change, and positions could vary from those indicated on this floorplan. Please refer to Sales Advisor for details of your selected plot. Computer generated image shown overleaf. External finishes, landscaping and configuration may vary from plot to plot. Please refer to Sales Advisor for further details. All dimensions are approximate and should not be used for carpet sizes, appliance spaces or furniture. Furniture not to scale and all positions are indicative. We operate a policy of continuous improvement and individual features such as kitchen and bathroom layouts, doors, windows, garages and elevational treatments may vary from time to time. Consequently these particulars should be treated as general guidance only and do not constitute a contract, part of a contract or a warranty. 02027-18/02/22.