



Unit 5A Sookholme Road, Shirebrook, Mansfield NG20 8SG

£285,000

A rare opportunity to purchase a long established business, 2 newly fitted workshops, a large collection of car parts particularly car bumpers for a wide variety of cars particularly VW's and Audi's.

The freehold premises are available for sale at £290,000 including stock, equipment and includes an eBay account which is available with 6,000 positive feedbacks.

Business Rate Free.

LOCATION

Sookholme Road is situated off Portland Road in Shirebrook. The town has good road access via the A617 to Junction 29 of the M1 Motorway which is approx. 5 miles distance. There are regular bus services to Shirebrook, Mansfield and Worksop which are approximately 4 and 8 miles away respectively. There is a railway station in Shirebrook with regular train services to Mansfield, Nottingham and Worksop.

DESCRIPTION

The premises comprise a recently constructed steel portal framed building clad in grey profile sheeting.



DESCRIPTION ADDITIONAL PHOTOS



DESCRIPTION ADDITIONAL PICS



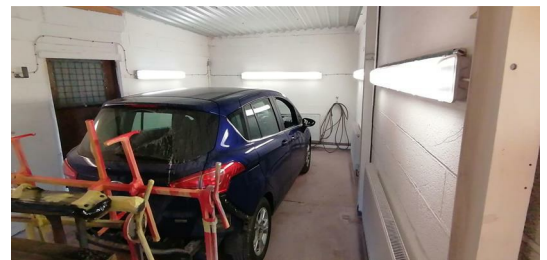
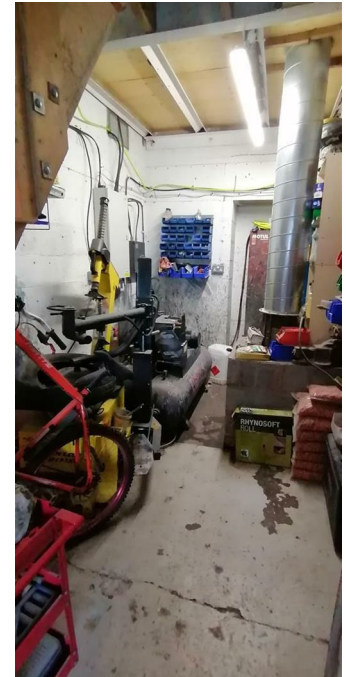
OFFICE 11'8" x 6'8" (3.58 x 2.04)

Double glazed window, worktop, pvc clad ceiling, loft over for storage



WORKSHOP 1 19'4" x 35'3" (5.9 x 10.76)

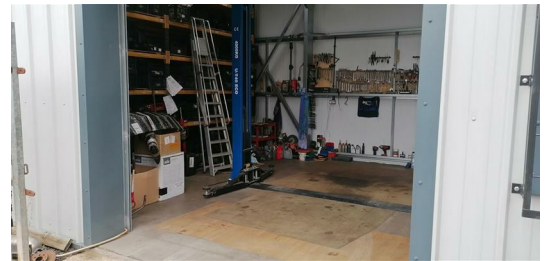
4 tonne capacity 2 post lift, extensive racking, welder, press, LED lights, concrete floor and 4.08m minimum headroom, rooflights, roller shutter door (motor can be fixed) 2.98m high x 2.98m wide, access to a stoned yard, palisaded fencing and steel sheeting

**ADDITIONAL PHOTOS WORKSHOP 1**

WORKSHOP 2 40'7" x 19'1" (12.39 x 5.82)

Block and profile sheeted with recently installed 3 phase electricity supply, roller shutter door 3.81m high x 3.24m wide, CCTV camera, scope to extend, steel container.

Within the Workshops there is a Dunlop tyre balancer, car ramp, 2 air compressors, 3 phase electricity, extractor fan and a spray booth.

**WORKSHOP 2 ADDITIONAL PHOTOS****LOFT OVER WORKSHOP 19'0" x 21'4" (5.81 x 6.52)**

With racking which could be extended to the full depth of the unit.



LEAN TO W.C.

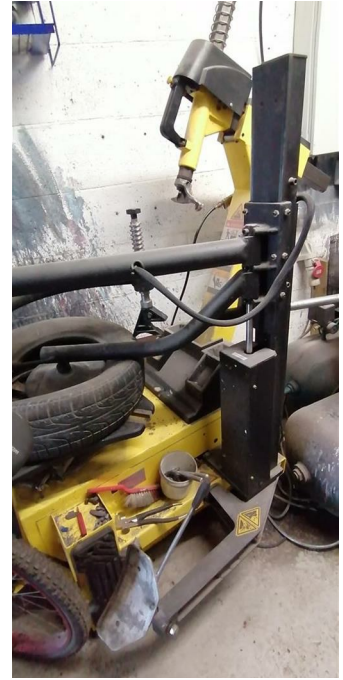
With low level w.c., wash hand basin and plumbing for washing machine.



EQUIPMENT AND STOCK



ADDITIONAL PHOTOS EQUIPMENT AND STOCK



ADDITIONAL PICS EQUIPMENT AND STOCK



PHOTOS EQUIPMENT AND STOCK



DISCLAIMER

These particulars, whilst believed to be accurate are set out as a general outline only for guidance and do not constitute any part of an offer or contract. Intending purchasers should not rely on them as statements of representation of fact, but must satisfy themselves by inspection or otherwise as to their accuracy. No person in this firm's employment has the authority to make or give any representation or warranty in respect of the property.

