



Because property is personal with...

Foldingshott, Datchworth

BELVOIR!

Guide price £525,000



Key Features

- Chain free
- Three bedroom semi-detached
- Potential to extend (STPP)
- Driveway parking and garage
- Peaceful cul-de-sac
- Set in the highly sought-after Datchworth village
- EPC rating TBC





Charming Chain-Free Home in Foldingshott, Datchworth

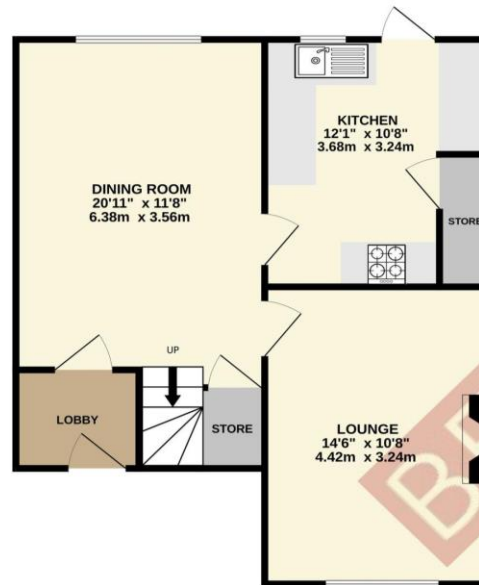
Nestled in the peaceful cul-de-sac of Foldingshott, this property offers an exciting opportunity to modernize and create your dream home. Ideal for a growing family, it features two reception rooms, a driveway, a garage, and a beautiful green space within the turning. Datchworth is renowned for its wonderful community, centred around a vibrant village green, tennis courts, cricket pitch, and pavilion hosting events throughout the year. Families will appreciate the well-regarded junior school, local shop, tea room, and three public houses, including the acclaimed Tilbury restaurant. With nearby Knebworth providing additional amenities and a mainline train to London, this chain-free home is a rare opportunity in a highly sought-after location!

Agent's Notes

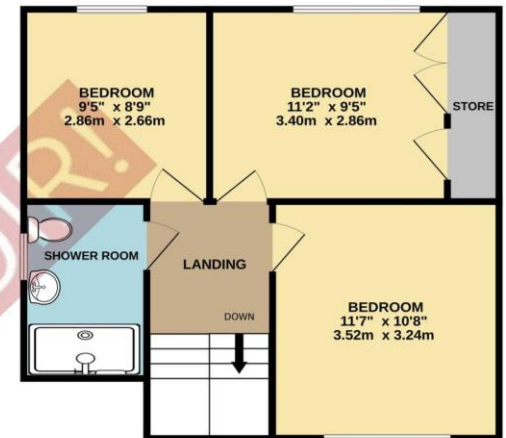
Belvoir are advised:

Council tax - East Hertfordshire band E

GROUND FLOOR
522 sq.ft. (48.5 sq.m.) approx.



1ST FLOOR
450 sq.ft. (41.8 sq.m.) approx.



TOTAL FLOOR AREA: 972 sq.ft. (90.3 sq.m.) approx.

Whilst every attempt has been made to ensure the accuracy of the floorplan contained here, measurements of doors, windows, rooms and any other items are approximate and no responsibility is taken for any error, omission or mis-statement. This plan is for illustrative purposes only and should be used as such by any prospective purchaser. The services, systems and appliances shown have not been tested and no guarantee as to their operability or efficiency can be given.
Made with Metropix ©2025



BELVOIR!