



Ingles, Welwyn Garden City



3



1



1

Guide price £395,000

- WEST SIDE LOCATION
- WALKING DISTANCE TO AMENITIES
- GREAT SCHOOLING OPTIONS
- NEARBY
- MONK'S WALK CATCHMENT
- IDEAL INVESTMENT
- IDEAL FIRST TIME BUY
- Freehold
- EPC rating C

Because property is personal with...

BELVOIR!



A traditional West Side 'Garden City' style terrace home close to popular schooling and local shops and located in the sought after Knightsfield area. This spacious three bedroom family home benefits from a replacement boiler along with replacement upvc double glazed windows and doors throughout. On entering the property, you are welcomed by an entrance hallway with doors leading to a bright lounge dining room and well fitted kitchen, to the first floor there are three bedrooms and a bathroom with a separate w.c. This family home is set back off the road overlooking a lovely green with parks and woodland walks just 2 minutes away. There is shared side access with an approximate 40ft garden to the rear. The current owners commented "we have loved living here in such a peaceful location and we are truly blessed to have such lovely neighbours and such highly rated schooling just on our doorstep. We are moving due to family and work commitments and sure the next owners will truly love our house as much as we have since taking ownership in 2011." This desirable West Side location is within a very short drive of Welwyn Garden City town centre, where there are a wide range of amenities and shops including John Lewis, Waitrose, and the Howard shopping centre, which itself accesses the mainline railway station with fast and frequent services into London King's Cross only a 30 minute commute away. Good transport links via the A1(M) are also within easy access. Within walking distance there is a variety of shops and restaurants to include the local Co-Op.



Entrance Hallway

Single radiator, under stairs cupboard, coving to ceiling, laminate wood style flooring, stairs to upper level, doors leading to

Lounge/Dining Room

Upvc double glazed window to front aspect, laminate wood style flooring, coving to textured ceiling, double radiator, ornate fireplace surround, upvc double glazed french doors and window to rear aspect

Kitchen 2.7 x 3.3

Upvc door and window to rear aspect, range of base and eye level units with roll top work surfaces and tiled splashbacks, plumber for washing machine and dish washer, space for fridge freezer, built in electric oven gas hob and extractor fan, tiled flooring, inset spotlights.

First Floor Landing

Textured ceiling, loft access, storage cupboard housing combination boiler, doors leading to

Master Bedroom 4.12 x 3.04

Upvc double glazed window to front aspect, single radiator, coving to textured ceiling,

Bedroom Two 3.79 x 2.59

Upvc double glazed window to rear aspect, single radiator, coving to textured ceiling, storage cupboard.

Bedroom Three 1.79 x 3.04

Upvc double glazed window to front aspect, double radiator, coving to textured ceiling, storage cupboard.

Bathroom

Upvc double glazed opaque window to rear aspect, wall mounted wash hand basin with vanity unit, panel enclosed bath with shower attachment and mixer taps, partly tiled walls.

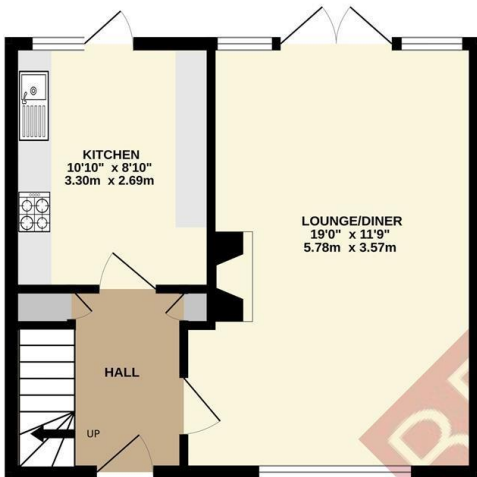
Separate W.C

Low level flush w.c, tiled walls.

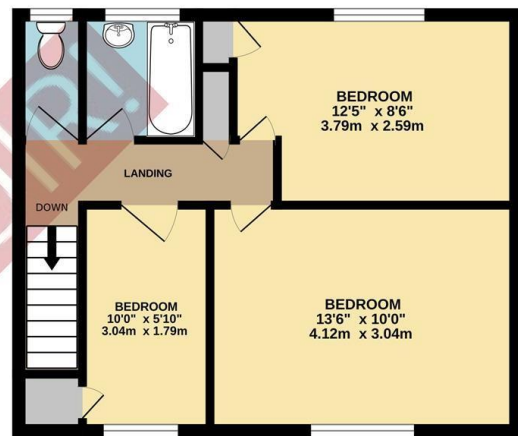
Outside Rear

Approximately 40ft long with side access, mainly laid to lawn with paved patio area and garden shed.

GROUND FLOOR
401 sq.ft. (37.3 sq.m.) approx.



1ST FLOOR
432 sq.ft. (40.1 sq.m.) approx.



TOTAL FLOOR AREA : 833 sq.ft. (77.4 sq.m.) approx.

Whilst every attempt has been made to ensure the accuracy of the floorplan contained here, measurements of doors, windows, rooms and any other items are approximate and no responsibility is taken for any error, omission or mis-statement. This plan is for illustrative purposes only and should be used as such by any prospective purchaser. The services, systems and appliances shown have not been tested and no guarantee as to their operability or efficiency can be given.
Made with Metropix ©2024



BELVOIR!

Belvoir Welwyn

01438 717 701

welwyn@belvoir.co.uk