



James Murray Apartments, Muirhall Road, PH2 7BH



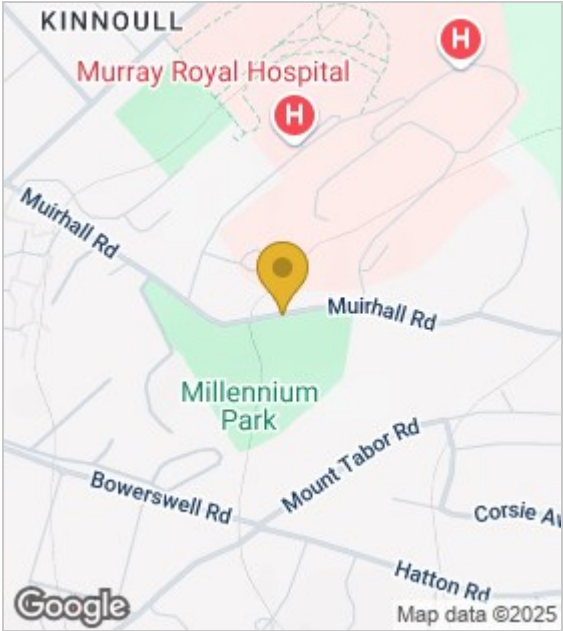
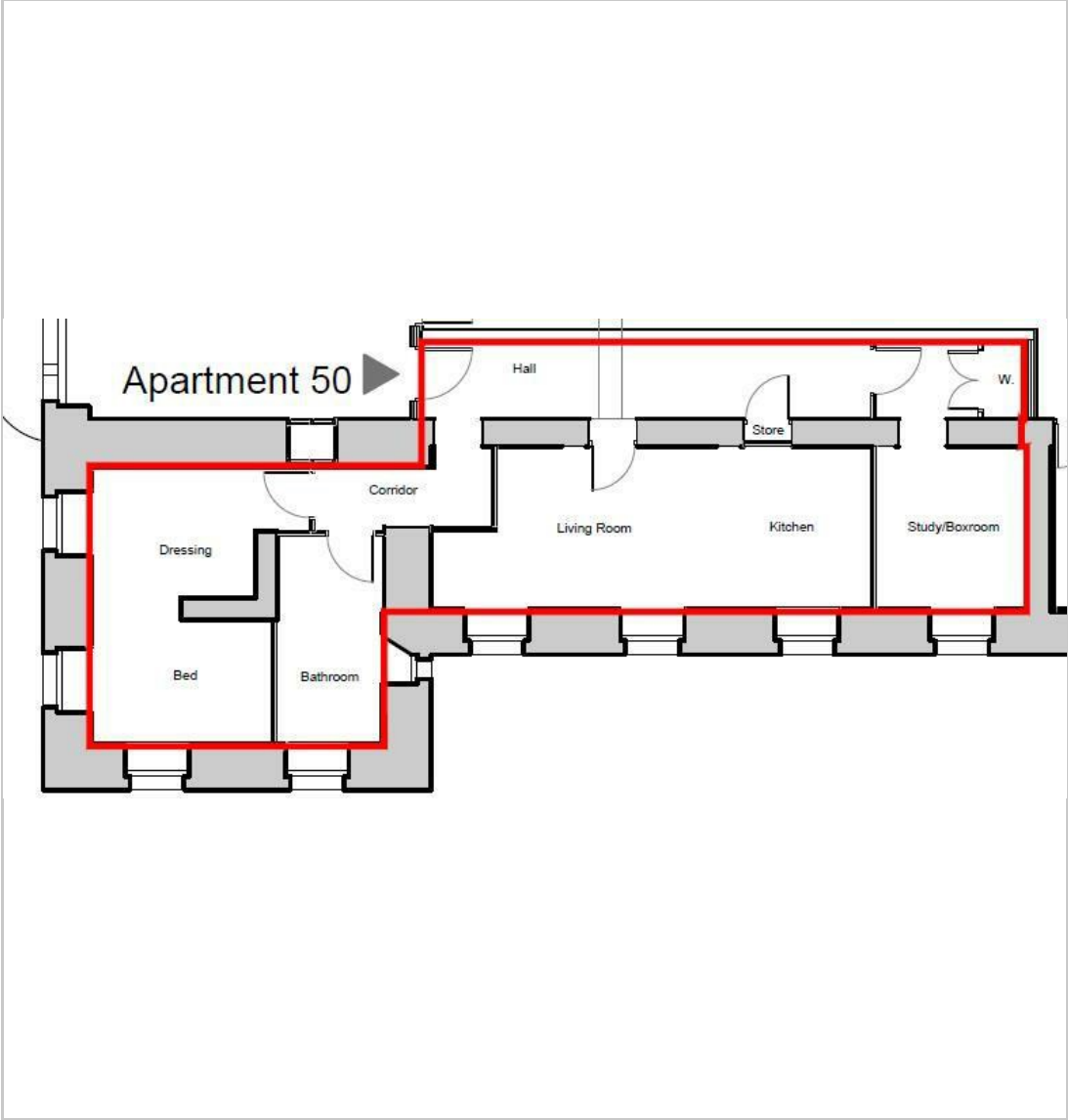
£1,000 PCM (per calendar month) PCM
Holding Deposit equal to 1 weeks rent
Tenancy Deposit equal to 5 weeks rent
Council Tax Band: C

Available beginning of June, this recently converted two bedroom apartment ideally located for high city centre, the accommodation includes two bedrooms the master with dressing area, an open plan living room/ kitchen complete with a range of integrated appliances.

Council tax band: B/C
 EPC - C
 LL Reg: 10822471/53/03052

We are required to advise that the buyer of this property is connected to or is employed by Noble Residential Limited. <https://www.noble-estate-agents.co.uk> 0179





Energy Efficiency Rating			Environmental Impact (CO ₂) Rating		
	Current	Potential		Current	Potential
Very energy efficient - lower running costs			Very environmentally friendly - lower CO ₂ emissions		
(92 plus) A			(92 plus) A		
(81-91) B			(81-91) B		
(69-80) C			(69-80) C		
(55-68) D			(55-68) D		
(39-54) E			(39-54) E		
(21-38) F			(21-38) F		
(1-20) G			(1-20) G		
Not energy efficient - higher running costs			Not environmentally friendly - higher CO ₂ emissions		
Scotland	EU Directive 2002/91/EC		Scotland	EU Directive 2002/91/EC	

These particulars, whilst believed to be accurate are set out as a general outline only for guidance and do not constitute any part of an offer or contract. Interested parties should not rely on them as statements of representation of fact, but must satisfy themselves by inspection or otherwise as to their accuracy. No person in this firms employment has the authority to make or give any representation or warranty in respect of the property.