



Cage End, Hatfield Broad Oak, CM22 7HT

£1,200 PCM (per calendar month)

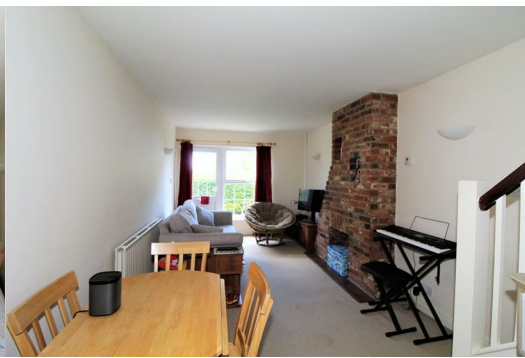
Holding deposit equal to one weeks rent

Security deposit equal to five weeks rent

Council Tax band - D



Terraced cottage in an idyllic village setting. Ideally located for all village amenities including village shop, pub and school. This cottage has lounge, separate fitted kitchen, two double bedrooms, bathroom, and a private rear garden. There is one parking space to the rear. Internal viewing recommended. Available from 19th May 2025.



Lounge

21'6 x 9'9 (6.55m x 2.97m)

Kitchen

9'9 x 9'8 (2.97m x 2.95m)

Landing

Bedroom One

8'10 x 9'9 (2.69m x 2.97m)

Bedroom Two

7'5 x 9'9 (2.26m x 2.97m)

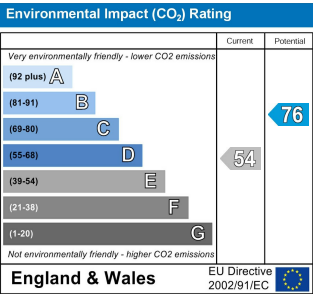
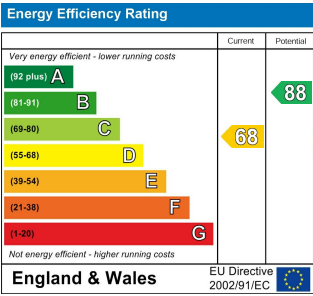
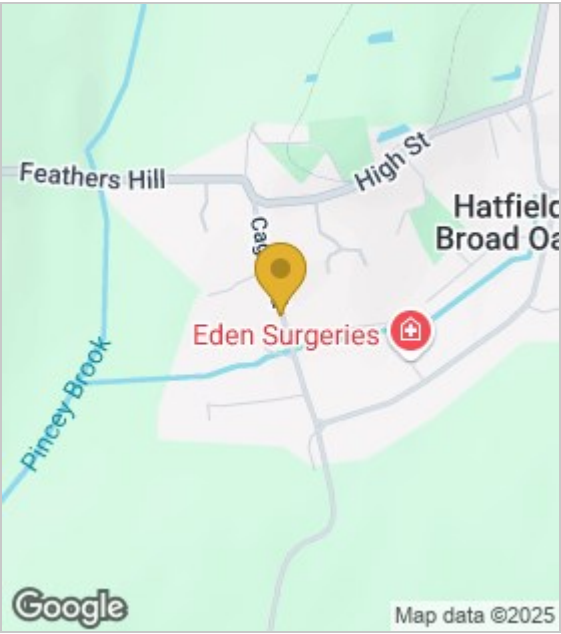
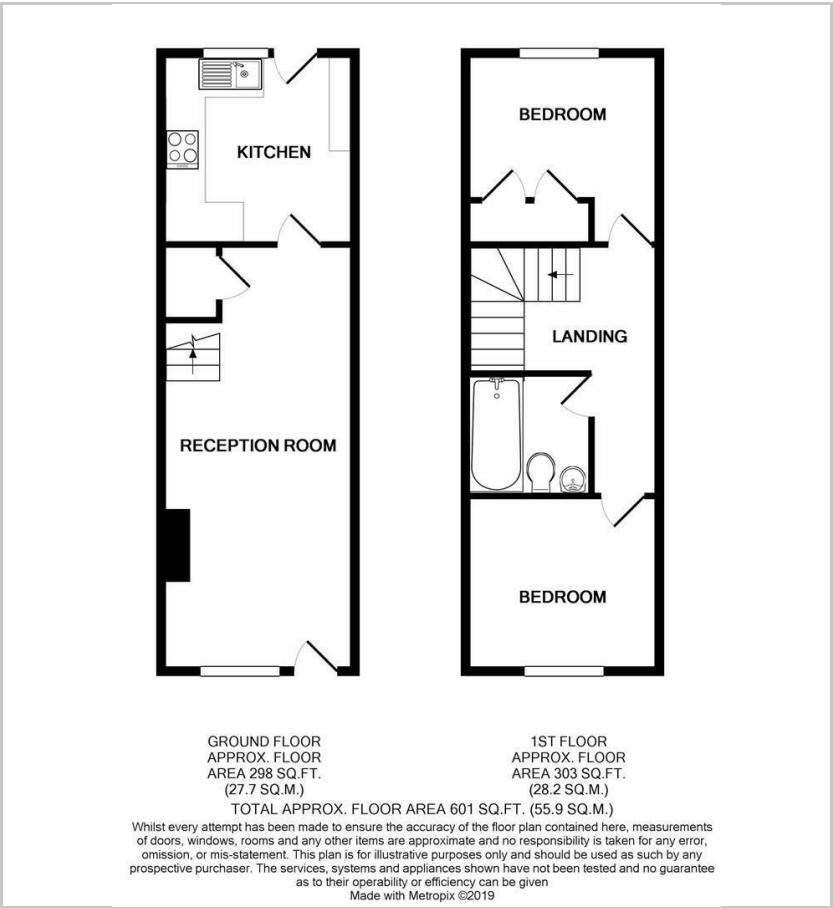
Bathroom

Garden

29' (8.84m)

Parking

One parking space to the rear of the property.



These particulars, whilst believed to be accurate are set out as a general outline only for guidance and do not constitute any part of an offer or contract. Intending purchasers should not rely on them as statements of representation of fact, but must satisfy themselves by inspection or otherwise as to their accuracy. No person in this firms employment has the authority to make or give any representation or warranty in respect of the property.