



Dorian Road, Hornchurch, RM12 4AW

- Guide Price £700,000 - £725,000
- Semi Detached Chalet Bungalow
 - Decorated To A High Standard
 - Three Bedrooms
 - Ensuite to Master Bedroom
 - Driveway For Three Cars
- 0.9 Miles to Emerson Park Station
 - 60' Rear Garden
 - Detached Outbuilding

Guide Price £700,000 - £725,000 - Freehold - Council Tax: E

Dorian Road

Hornchurch, RM12 4AW



Entrance Hall

20'2 x 15'6 (6.15m x 4.72m)
Entrance door, laminate flooring.

Bedroom One

20'2 x 10'2 (6.15m x 3.10m)
Double glazed bay window to front, air conditioning, laminate flooring.

Bedroom Two

14'8 x 10'3 (4.47m x 3.12m)
Double glazed bay window to front, radiator, carpet.

Reception Room Two/ Dressing Room

13'3 x 11'9 (4.04m x 3.58m)
Two double glazed sky lights, stairs leading to first floor, radiator, carpet.

Shower Room

7'4 x 3'8 (2.24m x 1.12m)
Shower cubicle, vanity wash hand basin, low level WC, Velux window, tiled walls, vinyl flooring.

Bathroom

11'4 x 6'00 (3.45m x 1.83m)
Freestanding bath, walk in shower enclosure, low level WC, vanity wash hand basin, double glazed window to side, radiator, tiled walls and floor.

Reception Room One

20'1 x 12'6 (6.12m x 3.81m)
Double glazed french doors to rear, carpet, radiator.

Kitchen/Dining Room

23'8 x 12'2 (7.21m x 3.71m)
Two Double glazed sky lights, wall and base units, double oven, four ring electric hob, full height fridge/freezer, dishwasher, washing machine, single drainer sink, double glazed french doors to rear, double glazed window to front, radiator, tiled flooring.

Bedroom Three

16'6 x 13'3 (5.03m x 4.04m)
Two double glazed sky lights, air conditioning, carpet, radiator.

Ensuite WC

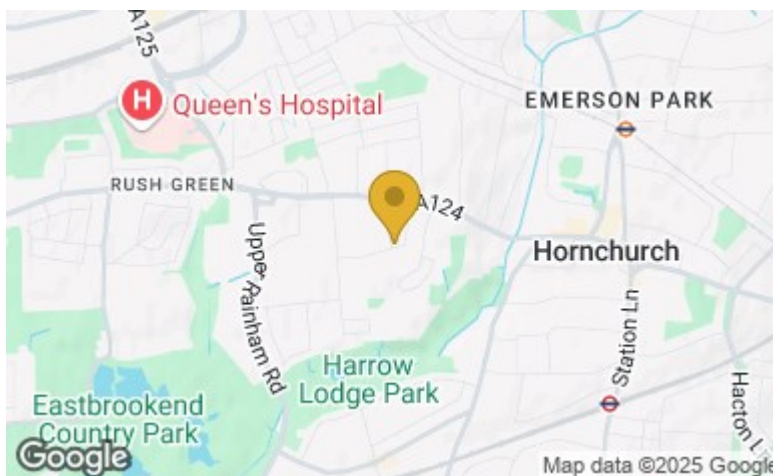
4'7 x 4'3 (1.40m x 1.30m)
Low level WC, wash hand basin, vinyl flooring, door to storage area.

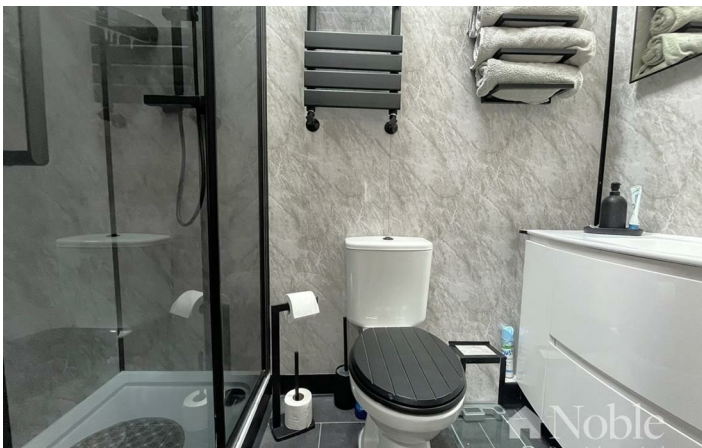
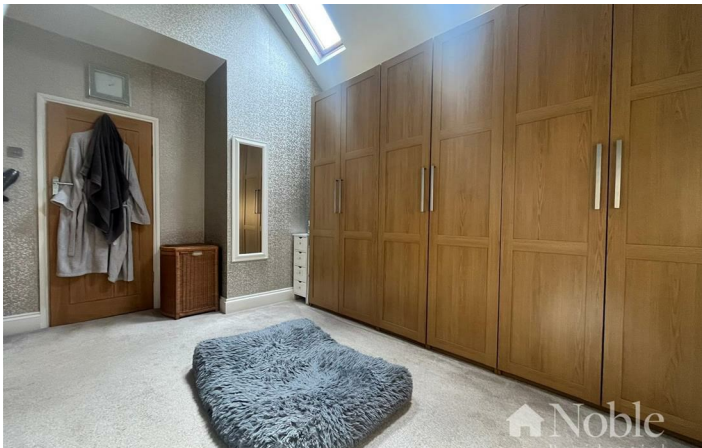
Garden

60' (18.29m)
Part laid to lawn and part paved, Outbuilding with power and air conditioning.

Driveway

Paved driveway for three cars.







TOTAL FLOOR AREA: 1766 sq.ft. (164.0 sq.m.) approx.

Whilst every attempt has been made to ensure the accuracy of the floorplan contained here, measurements of doors, windows, rooms and any other items are approximate and no responsibility is taken for any error, omission or mis-statement. This plan is for illustrative purposes only and should be used as such by any prospective purchaser. The services, systems and appliances shown have not been tested and no guarantee as to their operability or efficiency can be given.
Made with Metropix ©2025

These particulars, whilst believed to be accurate are set out as a general outline only for guidance and do not constitute any part of an offer or contract. Intending purchasers should not rely on them as statements of representation of fact, but must satisfy themselves by inspection or otherwise as to their accuracy. No person in this firm's employment has the authority to make or give any representation or warranty in respect of the property.

Material Information:
Council Tax Band: E
Tenure: Freehold

