



Lodge Avenue

Dagenham, RM8 2JA

Offered for sale with no onward chain is this three bedroom semi detached home, the accommodation includes entrance hall, lounge, kitchen/breakfast room ground floor bathroom, three bedrooms and a first floor shower room. Externally there is a private driveway, garage and rear garden with summerhouse.

£475,000 - Freehold - Council Tax: C

Lodge Avenue

Dagenham, RM8 2JA



Entrance Hall

Entrance door, stairs to first floor, under stair cupboard, cupboard housing boiler, additional cupboard, radiator, laminate flooring.

Reception Room

17'4 x 12'8 (5.28m x 3.86m)

Double glazed window to front, electric fire, coved ceiling, radiator, laminate flooring.

Kitchen/Breakfast Room

15'3 x 12'8 (4.65m x 3.86m)

Double glazed window and door to rear, fitted with a range of wall and base units, stainless steel single drainer sink, plumbing for washing machine and dishwasher, radiator, tiled flooring.

Ground Floor Bathroom

9'2 x 6'4 (2.79m x 1.93m)

Frosted double glazed window to rear, low level WC, vanity wash hand basin, panelled bath, radiator, part tiled walls, laminate flooring.

Landing

Loft access, carpet.

Bedroom One

13'3 x 11' (4.04m x 3.35m)

Double glazed window to front, fitted wardrobes, radiator, carpet.

Bedroom Two

12'10 x 9'2 (3.91m x 2.79m)

Double glazed window to rear, radiator, carpet.

Bedroom Three

12' x 7'9 (3.66m x 2.36m)

Double glazed window to front, radiator, carpet.

Shower Room

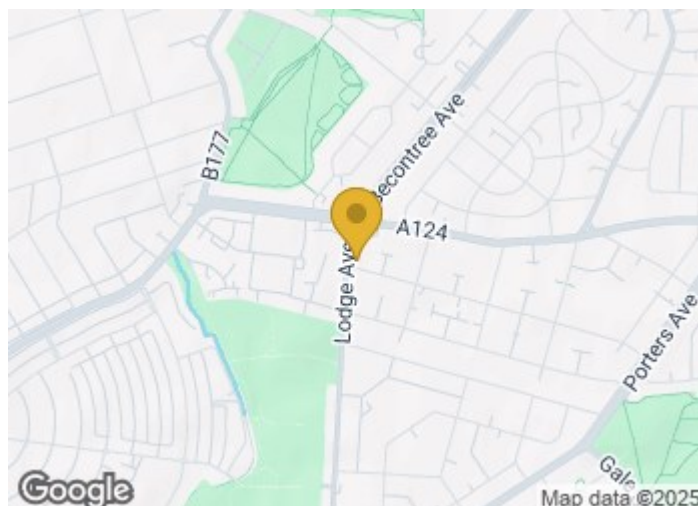
Frosted double glazed window to rear, low level WC, vanity wash hand basin, shower cubicle, radiator, tiled walls, vinyl flooring.

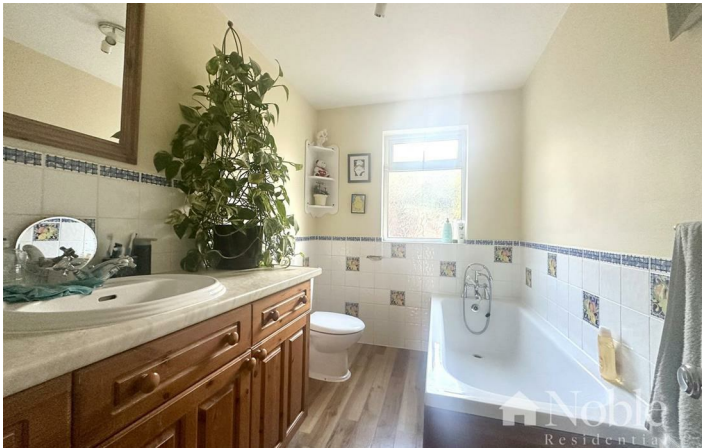
Garden

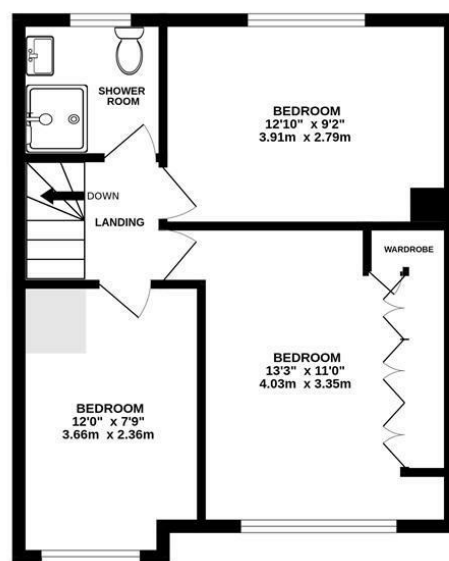
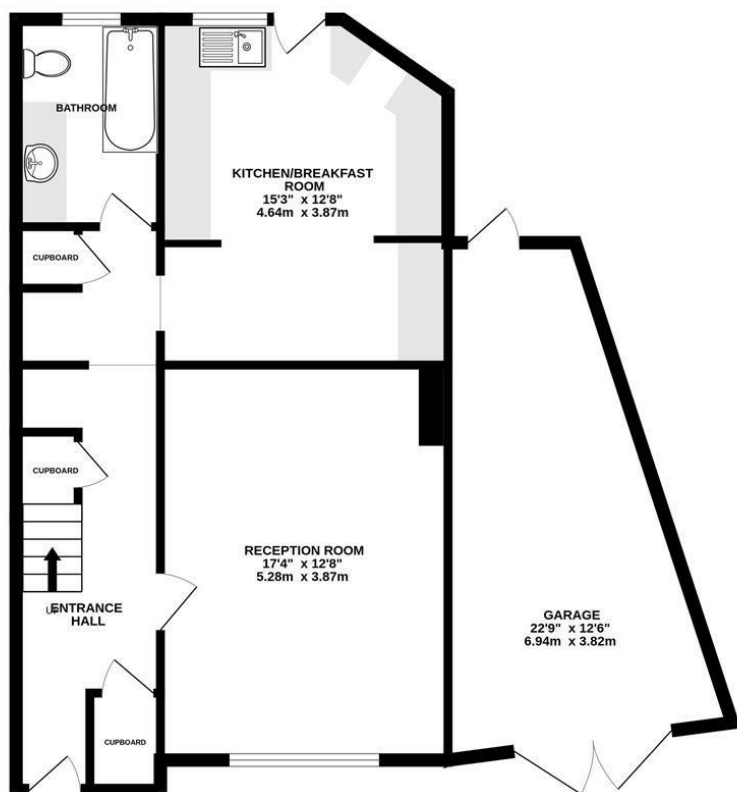
Access to garage, block paving and shingle areas, outside tap and light, timber outbuilding to rear.

Driveway and Garage

Driveway to front for two cars, garage to side.







TOTAL FLOOR AREA : 1249 sq.ft. (116.1 sq.m.) approx.

Whilst every attempt has been made to ensure the accuracy of the floorplan contained here, measurements of doors, windows, rooms and any other items are approximate and no responsibility is taken for any error, omission or mis-statement. This plan is for illustrative purposes only and should be used as such by any prospective purchaser. The services, systems and appliances shown have not been tested and no guarantee as to their operability or efficiency can be given.
Made with Metropix ©2025

These particulars, whilst believed to be accurate are set out as a general outline only for guidance and do not constitute any part of an offer or contract. Intending purchasers should not rely on them as statements of representation of fact, but must satisfy themselves by inspection or otherwise as to their accuracy. No person in this firm's employment has the authority to make or give any representation or warranty in respect of the property.

Material Information:
Council Tax Band: C
Tenure: Freehold

