



Park Meadow

Doddinghurst, CM15 0TT

Guide Price £800,000 - £825,000 Nestled in the charming village of Doddinghurst, is this detached home offering the perfect blend of space and comfort. The accommodation boasts three reception rooms, as well as a kitchen/breakfast room, utility room and ground floor WC on the ground floor and four bedrooms, bathroom and ensuite to the first floor. Externally there is a driveway and garage as well as a pretty 65ft garden.

Guide Price £800,000 - Freehold - Council Tax: F

Park Meadow

Doddinghurst, CM15 0TT



Entrance Porch

Entrance door, frosted window to either side, cupboard, laminate flooring.

Entrance Hall

Door to porch, stairs to first floor, radiator, coved ceiling, laminate flooring.

Lounge

20'3 x 13'7 (6.17m x 4.14m)

Double glazed bay window to front, double glazed window to side, double doors to dining room, two radiators, coved ceiling, carpet.

Dining Room

11'8 x 11'1 (3.56m x 3.38m)

Double glazed patio doors to sun lounge, two double glazed windows to side, radiator, coved ceiling, carpet.

Sun Lounge

17'1 x 8'4 (5.21m x 2.54m)

Double glazed patio doors to garden, double glazed window to rear, coved ceiling, carpet, radiator.

Kitchen/Breakfast Room

18'7 x 11'8 narrowing to 10'2 (5.66m x 3.56m narrowing to 3.10m)

Part double glazed door to side, double glazed window to side, wall and base units, stainless steel sink, oven, electric hob, extractor, integrated fridge, dishwasher, freezer, microwave, tiled flooring.

Utility Room

11'10 x 6'1 (3.61m x 1.85m)

Part double glazed door to side, double glazed window to side, wall and base units, butler sink, boiler, washing machine, tiled flooring.

Landing

Double glazed window to side, loft access, cupboard, carpet.

Bedroom One

14'4 x 12'8 (4.37m x 3.86m)

Double glazed window to front, fitted wardrobes, radiator, carpet.

Bedroom Two

12'7 x 11'10 (3.84m x 3.61m)

Double glazed window to rear, fitted wardrobe, radiator, carpet.

Ensuite

Frosted double glazed window to side, low level WC, pedestal wash hand basin, shower cubicle, carpet.

Bedroom Three

11'10 x 8'3 (3.61m x 2.51m)

Double glazed window to rear, radiator, carpet.

Bedroom Four

11'6 x 8'3 (3.51m x 2.51m)

Double glazed windows to front and side, radiator, carpet.

Bathroom

Frosted double glazed window to side, low level WC, pedestal wash hand basin, shower cubicle, panelled bath, heated towel rail, tiled walls, tiled flooring.

Garden

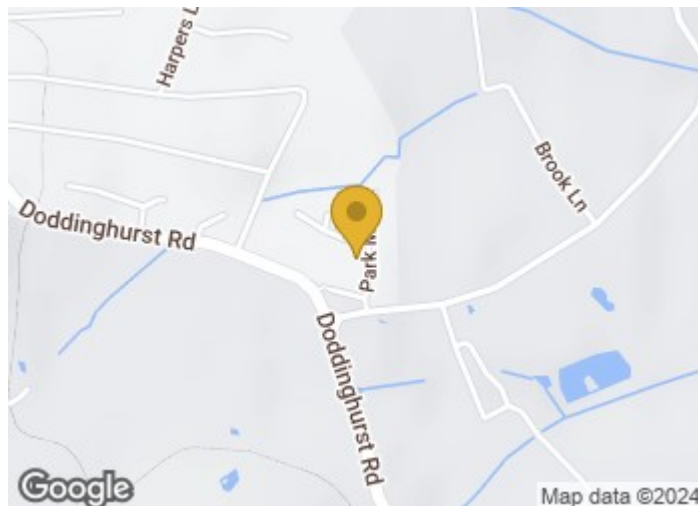
65' x 38' (19.81m x 11.58m)

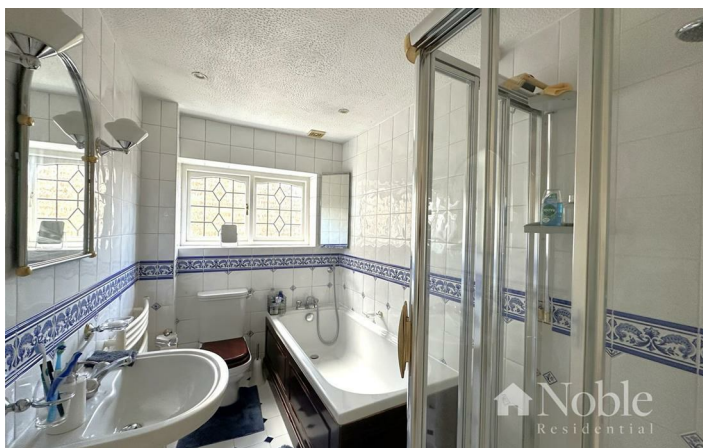
Gated side access to either side, patio, tiered lawn with mature flower beds, shed and greenhouse, outside tap.

Driveway & Garage

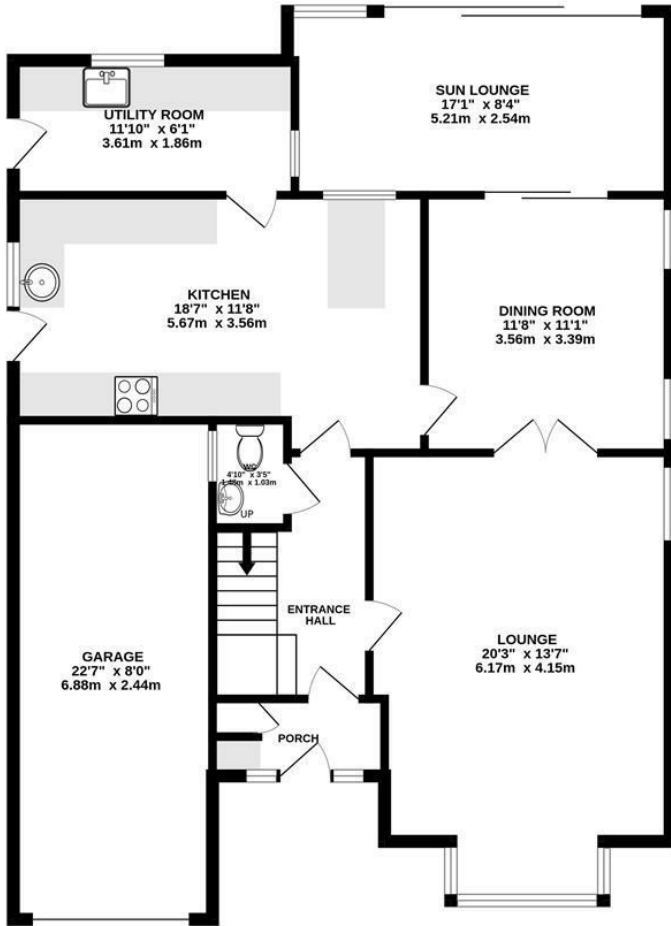
22'7 x 8' (6.88m x 2.44m)

Integral garage with power and light with driveway to front.

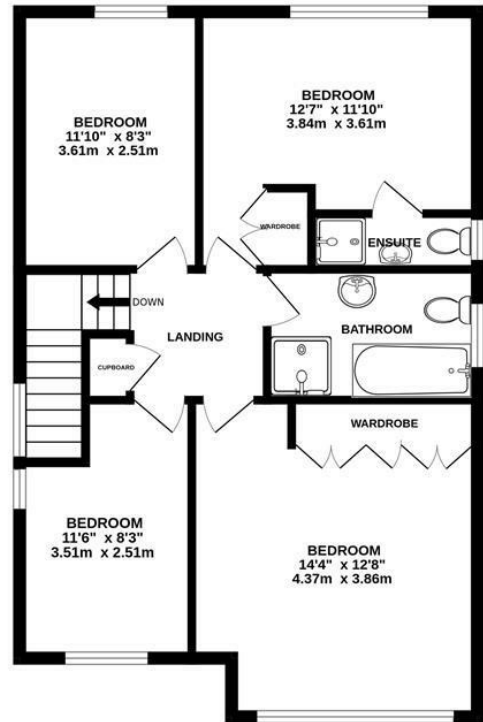




GROUND FLOOR
1116 sq.ft. (103.7 sq.m.) approx.



1ST FLOOR
635 sq.ft. (59.0 sq.m.) approx.



TOTAL FLOOR AREA : 1751 sq.ft. (162.7 sq.m.) approx.

Whilst every attempt has been made to ensure the accuracy of the floorplan contained here, measurements of doors, windows, rooms and any other items are approximate and no responsibility is taken for any error, omission or mis-statement. This plan is for illustrative purposes only and should be used as such by any prospective purchaser. The services, systems and appliances shown have not been tested and no guarantee as to their operability or efficiency can be given.
Made with Metropix ©2024

These particulars, whilst believed to be accurate are set out as a general outline only for guidance and do not constitute any part of an offer or contract. Intending purchasers should not rely on them as statements of representation of fact, but must satisfy themselves by inspection or otherwise as to their accuracy. No person in this firm's employment has the authority to make or give any representation or warranty in respect of the property.

Material Information:
Council Tax Band: F
Tenure: Freehold

