



Hillfoot Avenue, Romford, RM5 3LH

- Three Bedrooms
- No Onward Chain
- In Need Of Modernisation
 - Driveway For 2 Cars
 - Extended
 - 150' Garden
- 1.6 Miles to Romford Station
 - Detached Garage

£550,000 - Freehold - Council Tax: D

Hillfoot Avenue

Romford, RM5 3LH



Reception Room

23'7 x 15'1 (7.19m x 4.60m)

Double glazed bay window to front, gas fireplace, radiator, carpet.

Kitchen/ Breakfast Room

20'7 x 9'9 (6.27m x 2.97m)

Double glazed frosted window to side, double glazed window to rear, wall and base units, suspended timber flooring.

Dining Room

15'2 x 8'7 (4.62m x 2.62m)

Double glazed French doors to rear, double glazed window to rear, double glazed door to rear, radiator, carpet.

Utility Cupboard

6'5 x 5'0 (1.96m x 1.52m)

Plumbing for washing machine and tumble dryer, carpet.

Bathroom

10'8 x 8'1 (3.25m x 2.46m)

Panelled bath, shower cubicle, low level WC, wash hand basin, storage cupboard, carpet.

Bedroom One

13'3 x 12'9 (4.04m x 3.89m)

Double glazed window to front, built in wardrobe, radiator, carpet.

Bedroom Two

12'8 x 12'2 (3.86m x 3.71m)

Double glazed window to rear, carpet, radiator.

Bedroom Three

12'1 x 6'4 (3.68m x 1.93m)

Double glazed window to rear, radiator, carpets.

W/C

7'1 x 6'3 (2.16m x 1.91m)

Window to side, low level WC, wooden flooring.

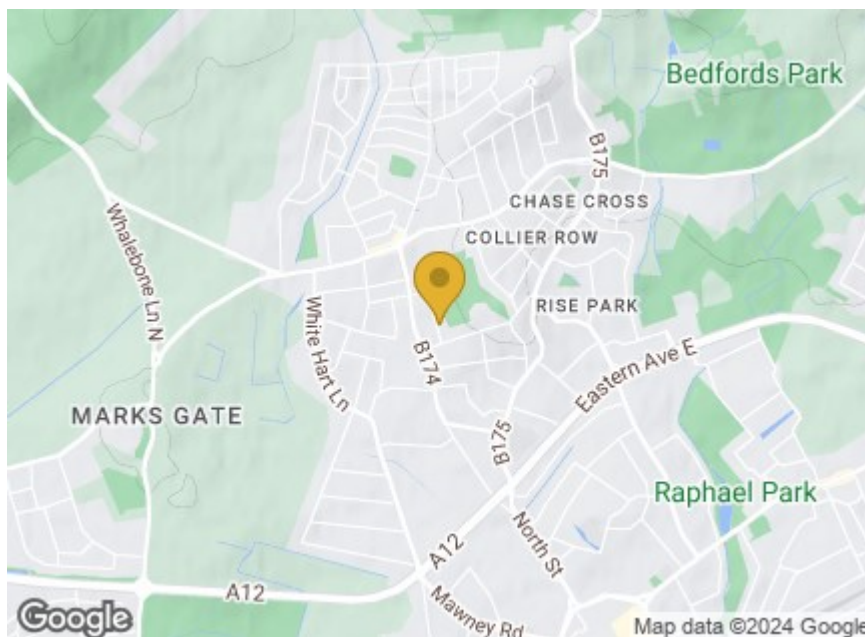
Garden

150' (45.72m)

Part paved and part laid to lawn, shed.

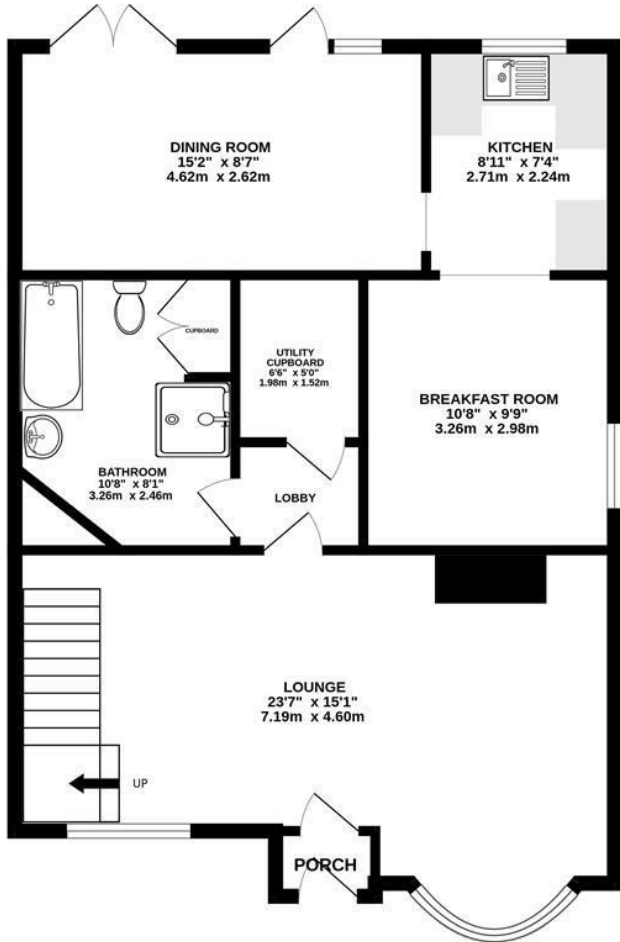
Driveway/ Garage

Paved driveway for two cars, Detached garage with power via shared access road.

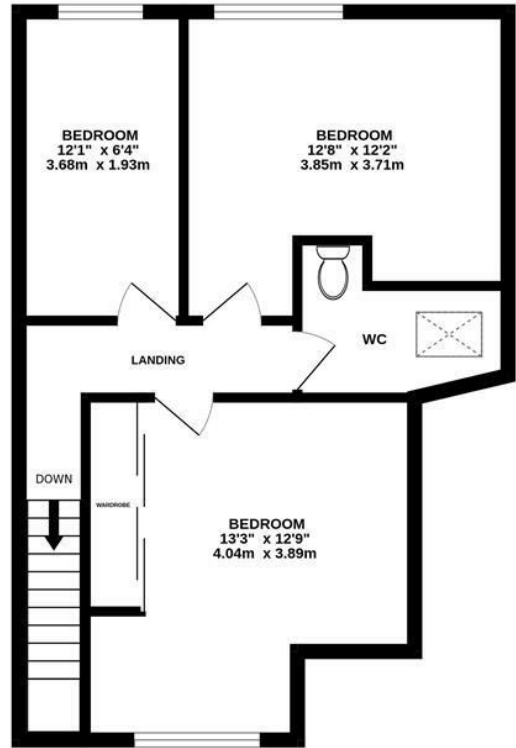




GROUND FLOOR
742 sq.ft. (69.0 sq.m.) approx.



1ST FLOOR
474 sq.ft. (44.0 sq.m.) approx.



TOTAL FLOOR AREA : 1216 sq.ft. (113.0 sq.m.) approx.

Whilst every attempt has been made to ensure the accuracy of the floorplan contained here, measurements of doors, windows, rooms and any other items are approximate and no responsibility is taken for any error, omission or mis-statement. This plan is for illustrative purposes only and should be used as such by any prospective purchaser. The services, systems and appliances shown have not been tested and no guarantee as to their operability or efficiency can be given.
Made with Metropix ©2024

These particulars, whilst believed to be accurate are set out as a general outline only for guidance and do not constitute any part of an offer or contract. Intending purchasers should not rely on them as statements of representation of fact, but must satisfy themselves by inspection or otherwise as to their accuracy. No person in this firm's employment has the authority to make or give any representation or warranty in respect of the property.

Material Information:
Council Tax Band: D
Tenure: Freehold

