

## **Faircross Avenue, Romford, RM5 3TL**

Offered for sale with no onward chain is this extended four bedroom end of terrace home, the accommodation includes open plan kitchen/dining/reception room, ground floor shower room, four bedrooms and bathroom. Externally there is a driveway for two cars and a 68ft rear garden.

**£475,000 - Freehold - Council Tax: D**

# Faircross Avenue

Romford, RM5 3TL



## Entrance Porch

Entrance door.

## Entrance Hall

Door to porch, laminate flooring, radiator, stairs to first floor, under stairs cupboard.

## Ground Floor Shower Room

7'4 x 2'6 (2.24m x 0.76m)

Frosted double glazed window to side, shower cubical, low level WC, heated towel rail, tiled floor, part tiled walls.

## Kitchen/ Dining Room/ Living Area

17'3 x 16'7 (5.26m x 5.05m)

Open plan to reception area, laminate flooring, radiator, stainless steel single drainer sink, electric hob, oven, extractor, wall and base units, double glazed window to rear, French doors to rear.

## Bedroom Four (Ground Floor)

12'10 x 10'10 (3.91m x 3.30m)

Double glazed window to front, laminate flooring, radiator.

## Landing

Double glazed window to side, loft access, carpet.

## Bedroom One

12'6 x 10'3 (3.81m x 3.12m)

Doble glazed window to front, carpet, radiator.

## Bedroom Two

10'3 x 10' (3.12m x 3.05m)

Double glazed window to rear, carpet, radiator.

## Bedroom Three

9' x 6'3 (2.74m x 1.91m)

Double glazed bay window to front, carpet, radiator.

## Bathroom

6'4 x 5'10 (1.93m x 1.78m)

Frosted double glazed window to rear, panelled bath with shower over, vanity wash hand basin, low level WC, tiled walls, tiled floors, heated towel rail.

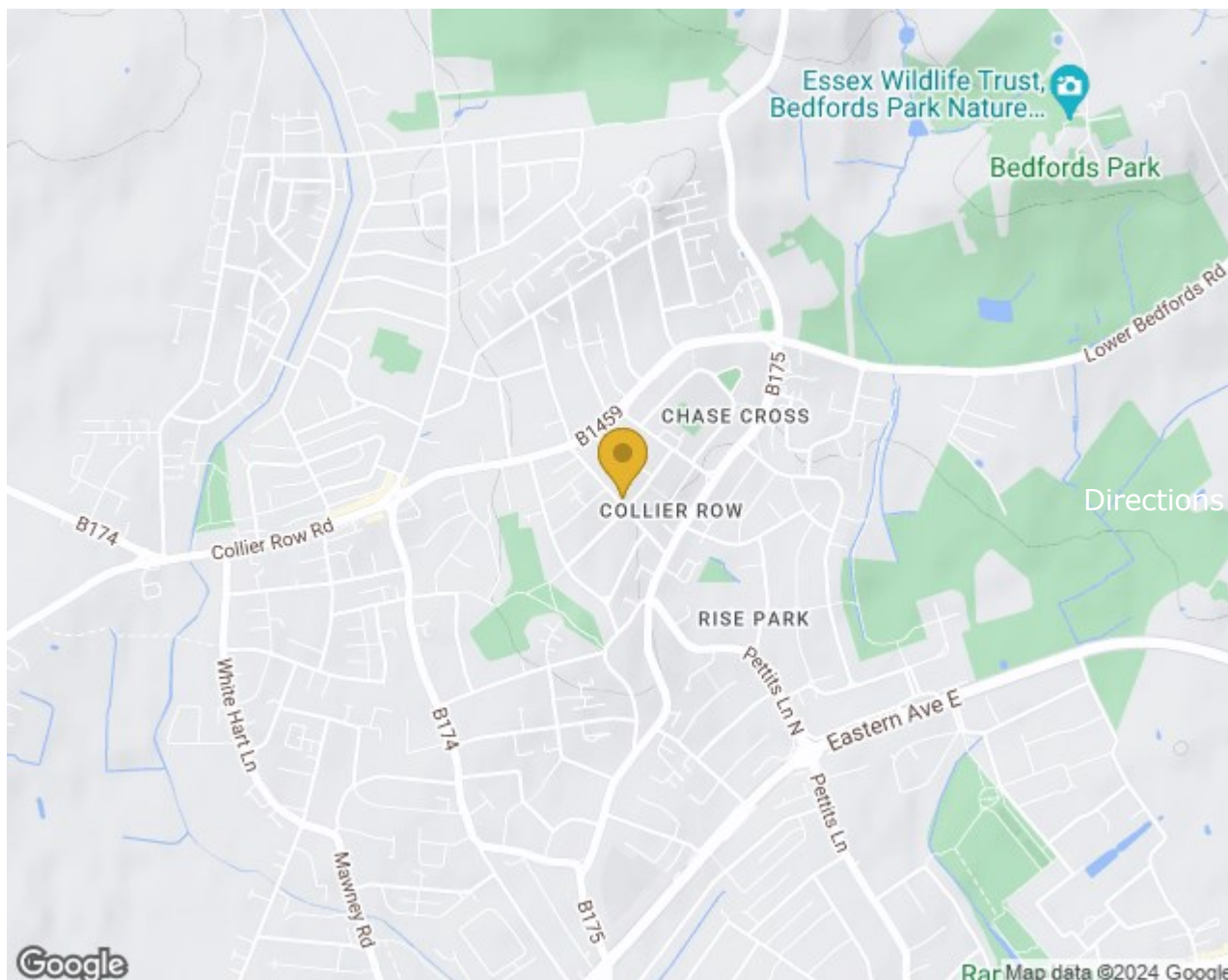
## Garden

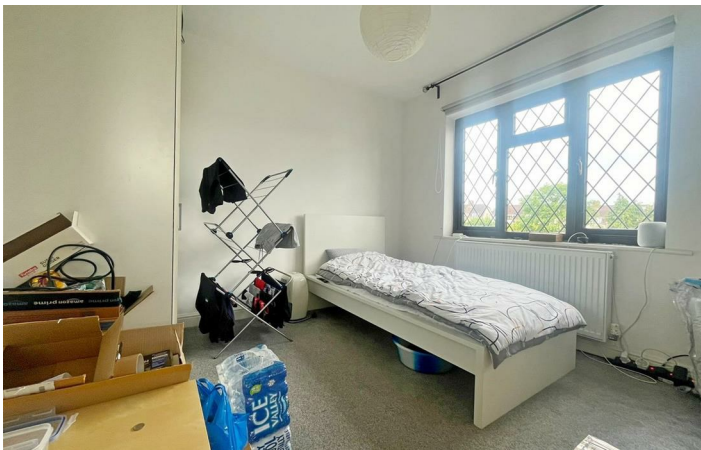
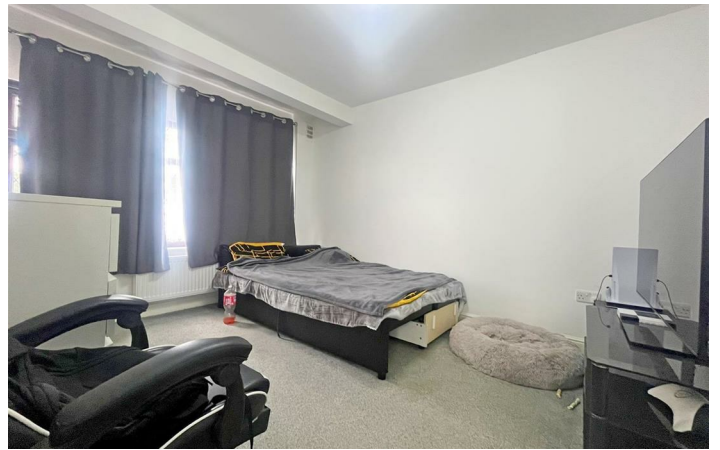
68' (20.73m)

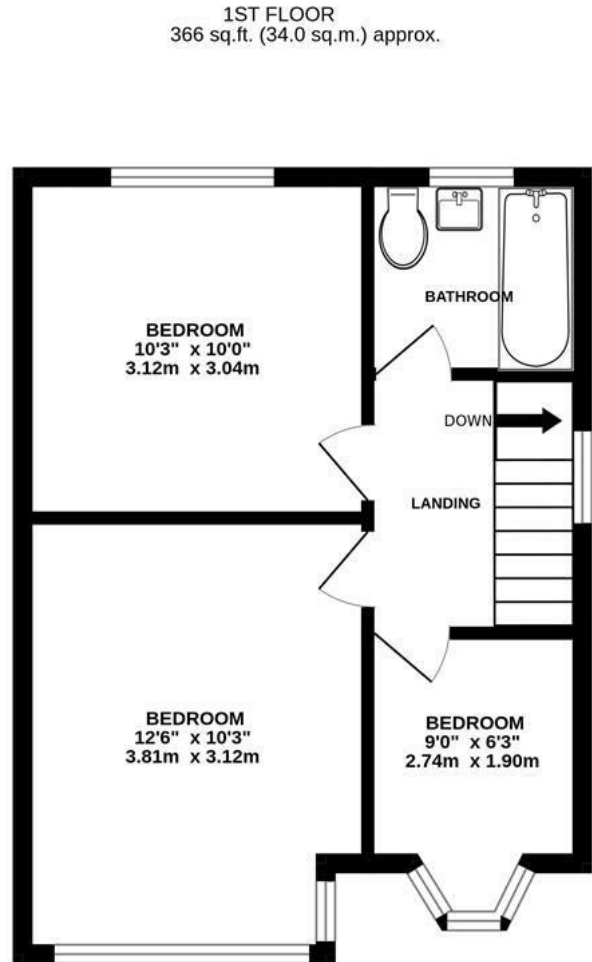
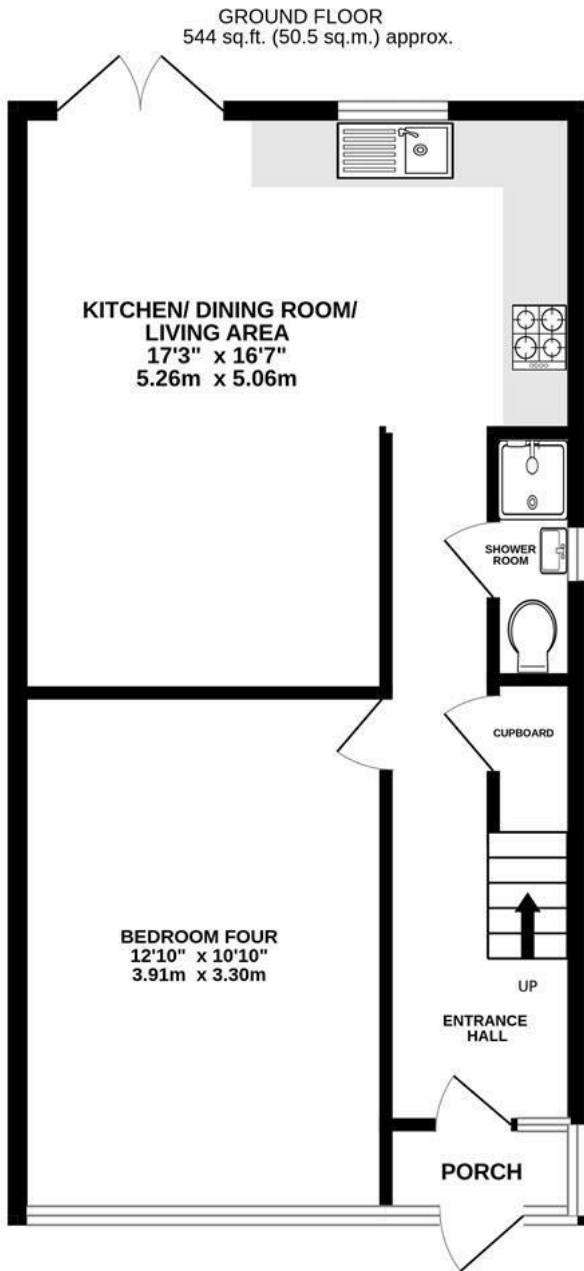
Patio area, lawn.

## Driveway

Driveway to front for two cars.







TOTAL FLOOR AREA : 910 sq.ft. (84.5 sq.m.) approx.

Whilst every attempt has been made to ensure the accuracy of the floorplan contained here, measurements of doors, windows, rooms and any other items are approximate and no responsibility is taken for any error, omission or mis-statement. This plan is for illustrative purposes only and should be used as such by any prospective purchaser. The services, systems and appliances shown have not been tested and no guarantee as to their operability or efficiency can be given.  
Made with Metropix ©2024

These particulars, whilst believed to be accurate are set out as a general outline only for guidance and do not constitute any part of an offer or contract. Intending purchasers should not rely on them as statements of representation of fact, but must satisfy themselves by inspection or otherwise as to their accuracy. No person in this firm's employment has the authority to make or give any representation or warranty in respect of the property.

Material Information:  
Council Tax Band: D  
Tenure: Freehold

