



## Veronica Close, Romford, RM3 8JW

- Chain Free
- Building Insurance And Heating Included In Service Charge
  - 17' Living Area
  - Communal Parking
    - First Floor
- Separate Living & Kitchen Area

**Asking Price - £200,000**



# Veronica Close

Romford, RM3 8JW



## Entrance Hall

Radiator, carpet, storage cupboard

## Reception Room

17'8 x 10'4 (5.38m x 3.15m)

Double glazed window to side, carpet, radiator.

## Kitchen

13'07 x 6'1 (4.14m x 1.85m)

Vinyl flooring, radiator, gas hob and cooker, extractor fan, double glazed window to rear, single drainer sink, dishwasher, wall and base units, boiler, Washing machine

## Bedroom

13'1 x 10'10 (3.99m x 3.30m)

Double glazed window to front, carpet, radiator.

## Bathroom

6'2 x 6'4 (1.88m x 1.93m)

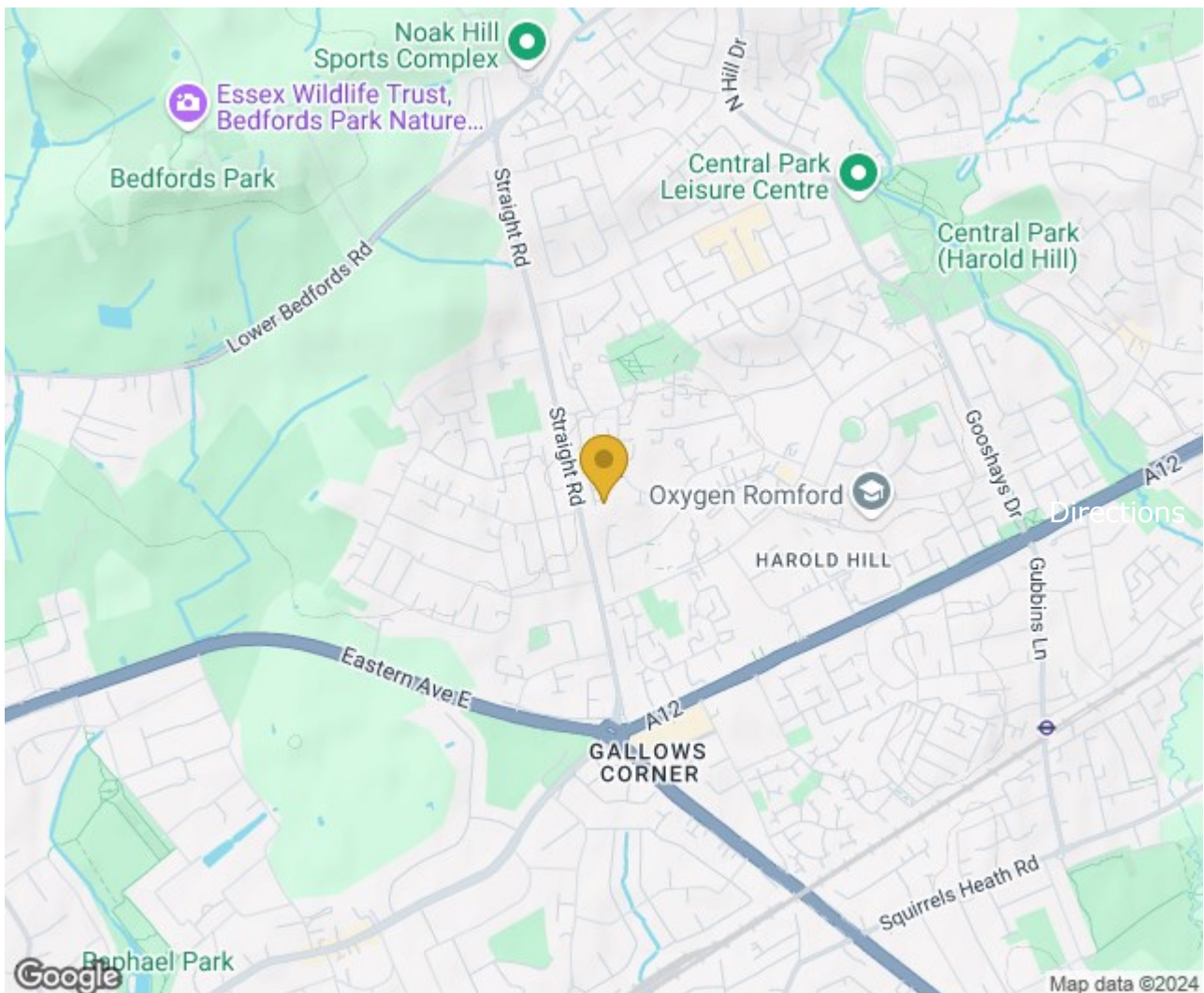
Panelled bath with shower attachment, Part tiled walls, Vanity wash hand basin, heated towel rail, low level WC, storage cupboard.

## Parking

Residents communal parking.

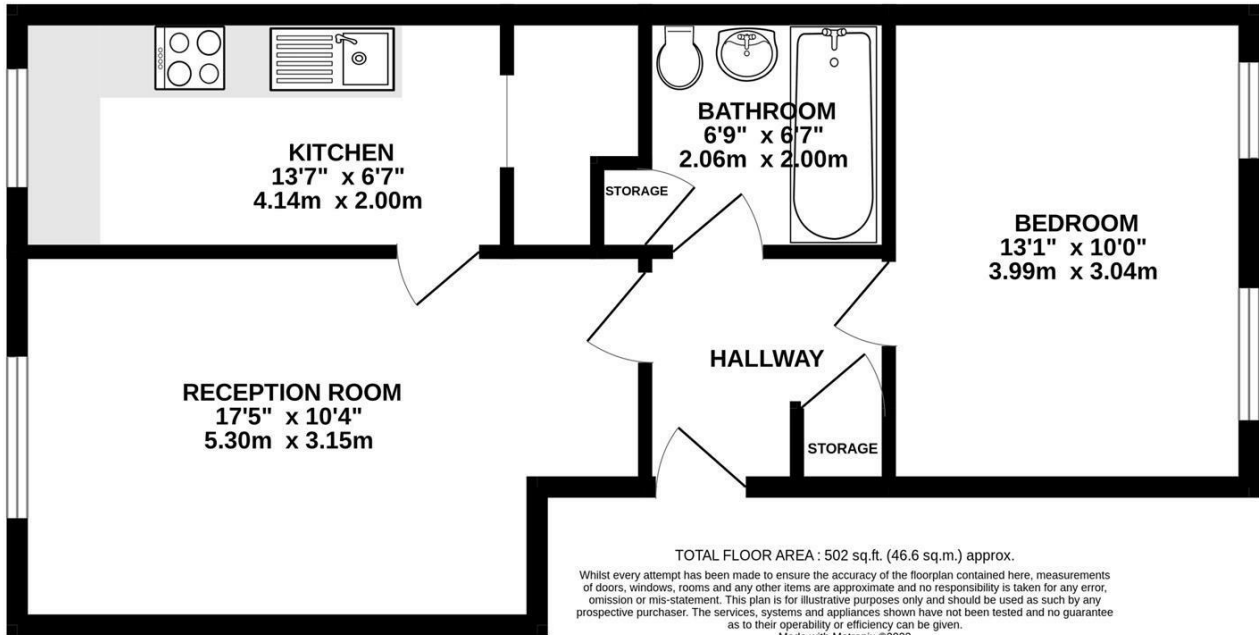
## Material Information

- Lease: 116 years
- Current annual ground rent: £10.00
- Ground rent review period: N/A
- Current annual service charge: £2,386.65 which includes buildings insurance and heating bills.





**GROUND FLOOR**  
502 sq.ft. (46.6 sq.m.) approx.



These particulars, whilst believed to be accurate are set out as a general outline only for guidance and do not constitute any part of an offer or contract. Intending purchasers should not rely on them as statements of representation of fact, but must satisfy themselves by inspection or otherwise as to their accuracy. No person in this firm's employment has the authority to make or give any representation or warranty in respect of the property.

