



Carlton Place, Walfords Close, Old Harlow, CM17 0FH

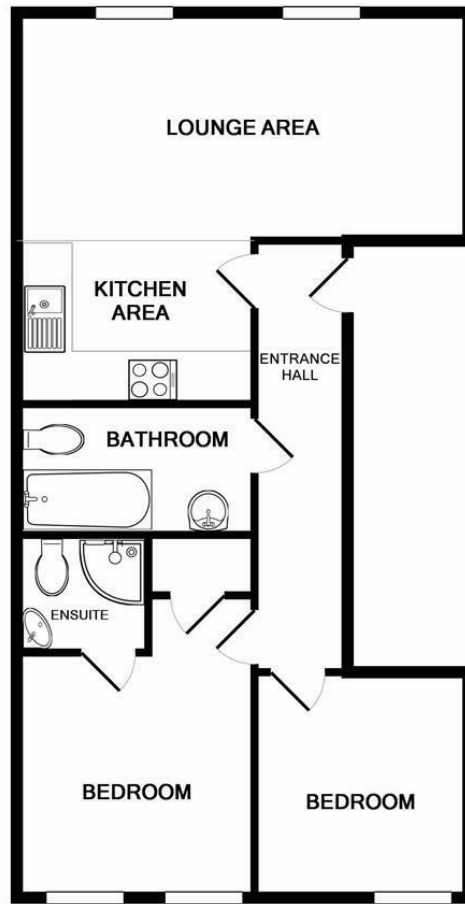


£1,350 PCM (per calendar month)
Holding Deposit equal to 1 weeks rent
Tenancy Deposit equal to 5 weeks rent
Council Tax Band: D

Modern two bedroom first floor apartment, accommodation includes entrance hall, open plan living area and kitchen which includes oven, hob, extractor, washing machine and fridge freezer, two bedrooms the master with ensuite and additional bathroom. Additionally there are two underground parking spaces.

Under section 21 of the Estate Agents Act 1979 We are required to advise that the owner of this property is connected to or is employed by Noble Residential Limited.





TOTAL APPROX. FLOOR AREA 561 SQ.FT. (52.1 SQ.M.)

Whilst every attempt has been made to ensure the accuracy of the floor plan contained here, measurements of doors, windows, rooms and any other items are approximate and no responsibility is taken for any error, omission, or mis-statement. This plan is for illustrative purposes only and should be used as such by any prospective purchaser. The services, systems and appliances shown have not been tested and no guarantee as to their operability or efficiency can be given
Made with Metropix ©2019

Entrance Hall

Living / Kitchen Area

18'0" x 15'5" (5.5 x 4.7)

Bedroom One

9'10" x 9'6" (3 x 2.9)

Ensuite

Bedroom Two

8'10" x 8'2" (2.7 x 2.5)

Bathroom

Underground Parking

Please note

Photos used within marketing were taken prior to current tenant moving in.



Energy Efficiency Rating		Current	Potential
Very energy efficient - lower running costs			
(92 plus) A		83	83
(81-91) B			
(69-80) C			
(55-68) D			
(39-54) E			
(21-38) F			
(1-20) G			
Not energy efficient - higher running costs			
England & Wales		EU Directive 2002/91/EC	

Environmental Impact (CO ₂) Rating		Current	Potential
Very environmentally friendly - lower CO ₂ emissions			
(92 plus) A		88	88
(81-91) B			
(69-80) C			
(55-68) D			
(39-54) E			
(21-38) F			
(1-20) G			
Not environmentally friendly - higher CO ₂ emissions			
England & Wales		EU Directive 2002/91/EC	