



Arisdale Avenue, South Ockendon, RM15 5BD

- No Onward Chain
- Ground Floor Maisonette
- One Double Bedroom
- Allocated Parking Space
- Double Glazed Windows
- Electric Central Heating with Radiators
- 17 Min Walk to Ockendon Station (source: google maps)

£180,000 - Leasehold

Arisdale Avenue

South Ockendon, RM15 5BD



Entrance Hall

Entrance door. Smooth ceiling, security entry phone system, laminate flooring.

Reception Room

14'8 x 9'11 (4.47m x 3.02m)

Double glazed window. Smooth ceiling, radiator, laminate flooring.

Kitchen

9'10 x 7'4 (3.00m x 2.24m)

Double glazed window. Range of matt white base and eye level wall cabinets with butcher block style worktops, four burner electric hob set into worktop with integrated oven beneath and overhead extractor hood, integrated dishwasher, smooth ceiling, spotlights, cupboard housing boiler, tiled walls, laminate flooring.

Bedroom

9'11 x 8'1 (3.02m x 2.46m)

Double glazed window. Smooth ceiling, radiator, laminate flooring.

Bathroom

7'4 x 4'9 (2.24m x 1.45m)

Suite comprising of panelled bath with over head shower and handheld, glass screen, wash basin with cupboard beneath and low level WC. Smooth ceiling, extractor, part tiled walls, heated towel rail, vinyl flooring.

Parking

Allocated parking space and visitors spaces.

Outside

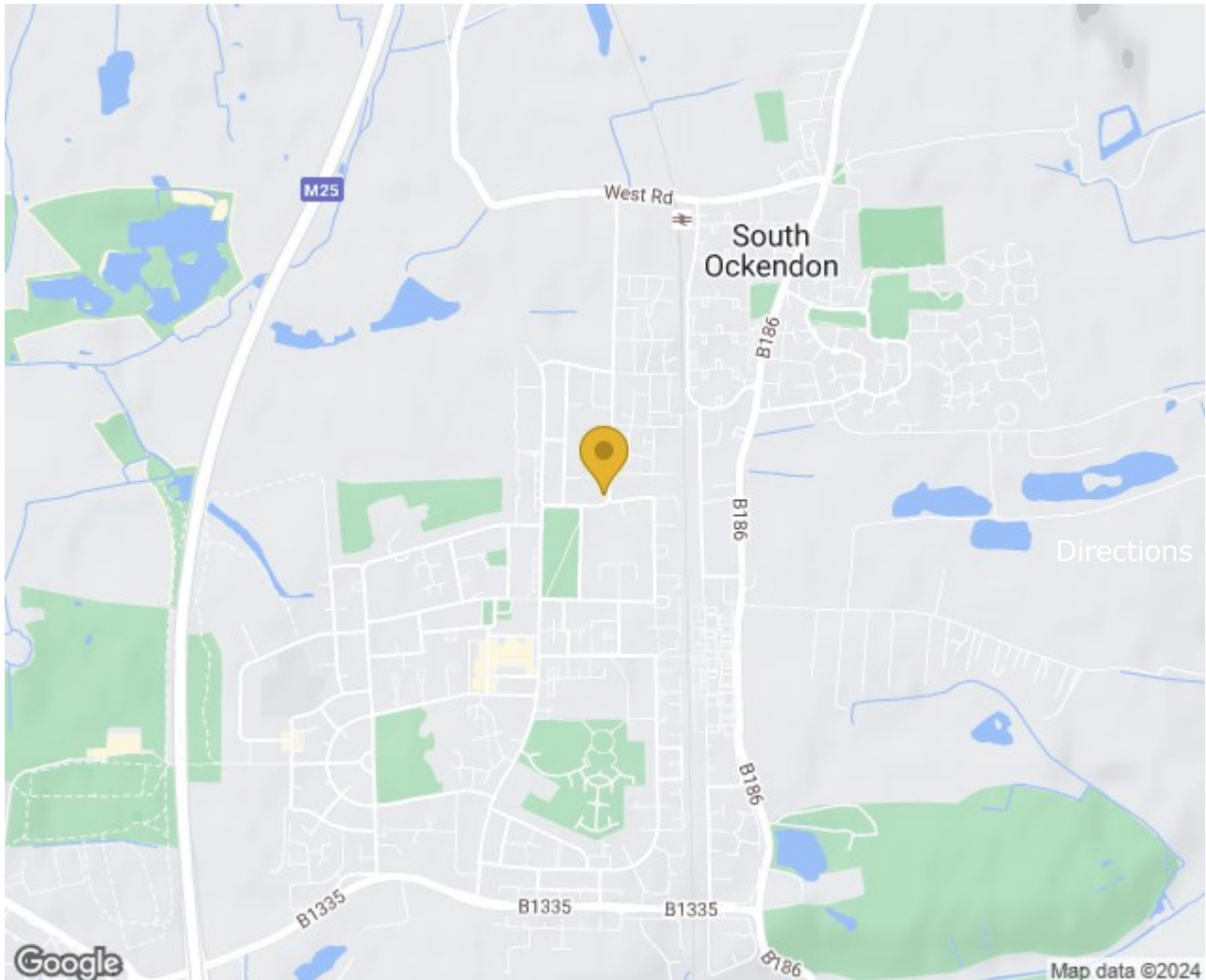
Communal gardens.

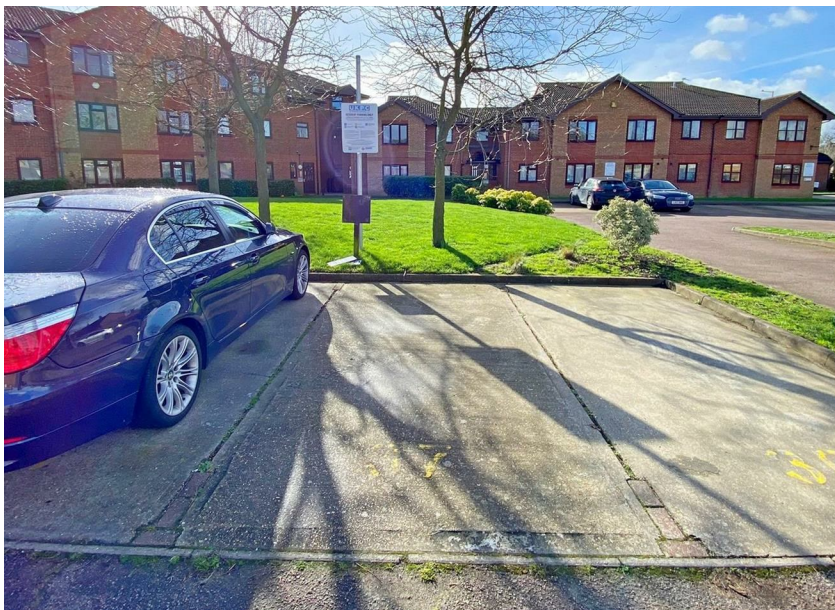
Lease

Lease: 125 years from June 1991.

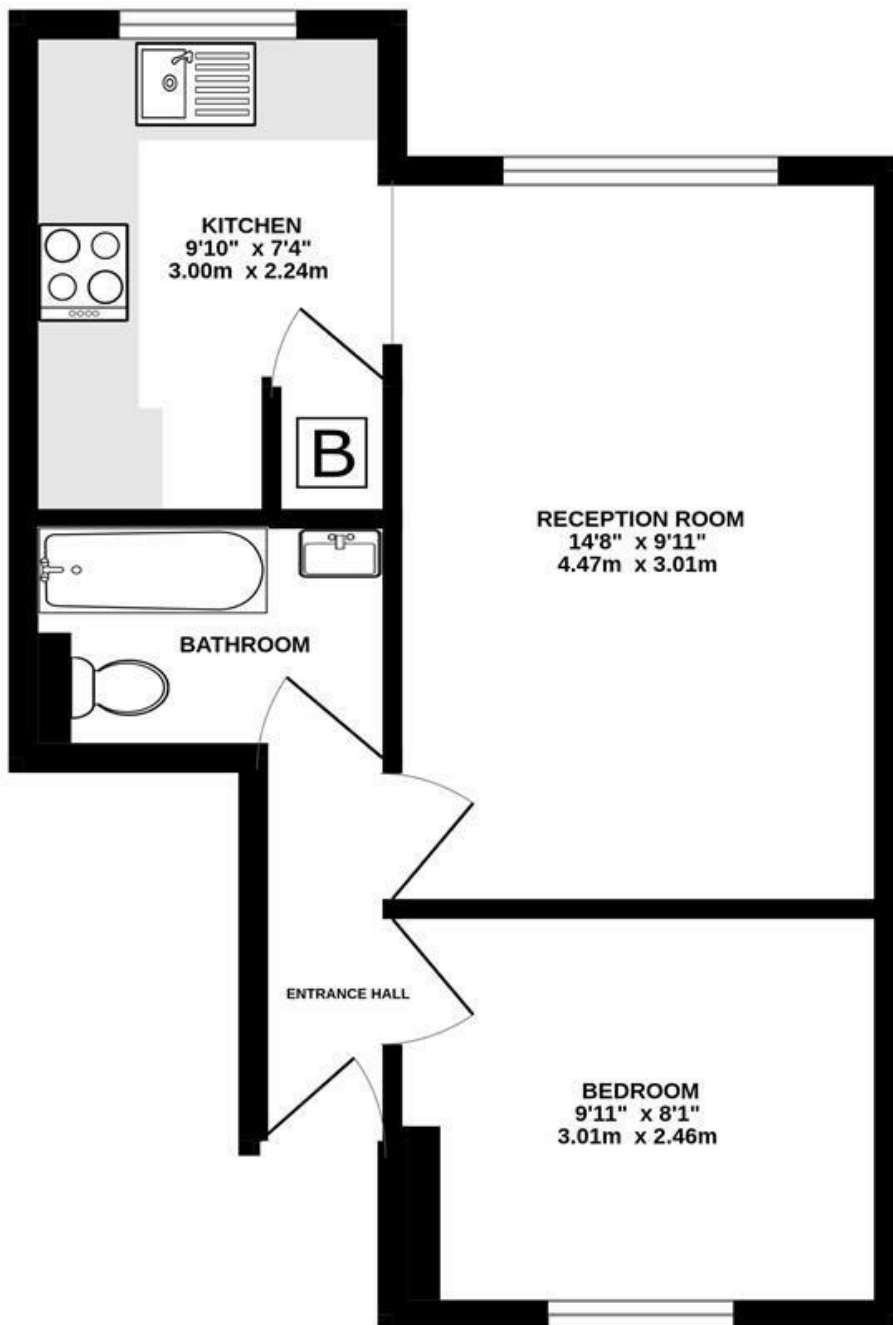
Service Charge: £916 - £457.86 paid bi-annually.

Ground Rent: £100 - Increasing by £50 every 25yrs - due to increase next on 24 June 2041.





GROUND FLOOR
349 sq.ft. (32.4 sq.m.) approx.



TOTAL FLOOR AREA : 349 sq.ft. (32.4 sq.m.) approx.

Whilst every attempt has been made to ensure the accuracy of the floorplan contained here, measurements of doors, windows, rooms and any other items are approximate and no responsibility is taken for any error, omission or mis-statement. This plan is for illustrative purposes only and should be used as such by any prospective purchaser. The services, systems and appliances shown have not been tested and no guarantee as to their operability or efficiency can be given.
Made with Metropix ©2024

These particulars, whilst believed to be accurate are set out as a general outline only for guidance and do not constitute any part of an offer or contract. Intending purchasers should not rely on them as statements of representation of fact, but must satisfy themselves by inspection or otherwise as to their accuracy. No person in this firm's employment has the authority to make or give any representation or warranty in respect of the property.

Material Information:
Council Tax Band: A
Tenure: Leasehold

