



Priory Mews, Hornchurch, RM11 1DF

- First Floor Flat
- En-Suite to Bedroom One
- Allocated Parking Space & Garage
 - Juliette Balcony
 - Access to Loft Space
 - Gas Central Heating
- 25 Minute Walk to Emerson Park Station (source: google maps)
- 31 Minute Walk to Romford Station (source: google maps)

£325,000 - Leasehold - Council Tax: D

Priory Mews

Hornchurch, RM11 1DF



Entrance Hall

18' x 3'7 (5.49m x 1.09m)

Entrance door, Laminate flooring, radiator, spotlights, loft access, storage cupboard.

Bathroom

7'2 x 5'6 (2.18m x 1.68m)

Spotlights, laminate flooring, walk in shower cubicle, vanity wash hand basin, low level WC, heated towel rail, part tiled walls.

Bedroom One

12'2 x 9'8 (3.71m x 2.95m)

Double glazed window to front, carpet, radiator, built in wardrobes.

En suite

7'6 x 5'5 (2.29m x 1.65m)

Spotlights, laminate flooring, double glazed frosted window to front, low level WC, vanity wash hand basin, panelled bath, heated towel rail.

Bedroom Two

9'6 x 7'7 (2.90m x 2.31m)

Double glazed window to front, carpet, radiator, built in wardrobes.

Open Plan Living/Dining Area

23'2 x 14' (7.06m x 4.27m)

Laminate flooring, French doors to Juliette balcony, radiator, double glazed window to side.

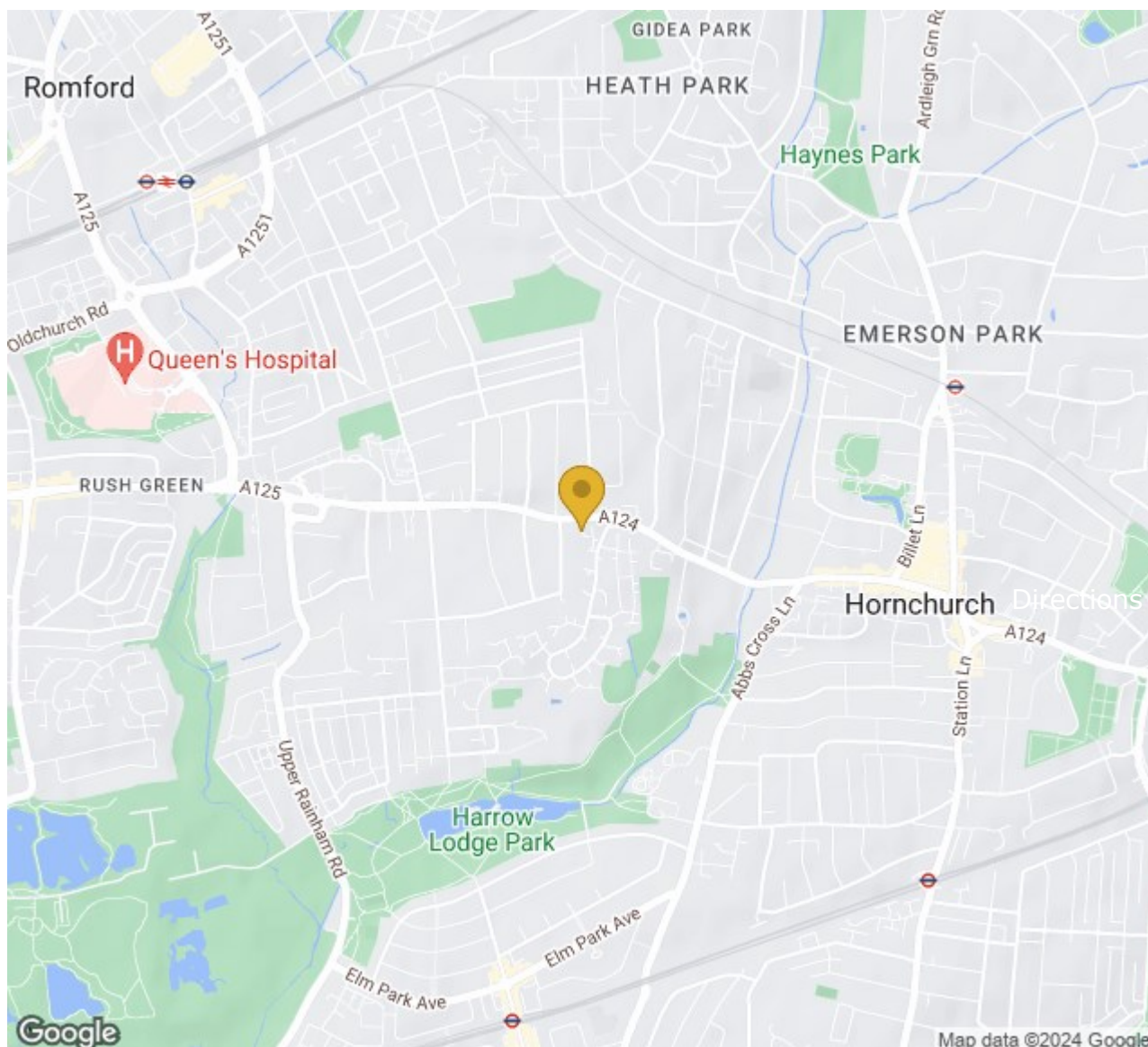
Kitchen

11'9 x 7' (3.58m x 2.13m)

Spotlights, wall and base units, single drainer sink, laminate flooring, range of integrated appliances including dishwasher, fridge/ freezer, induction hob, double oven.

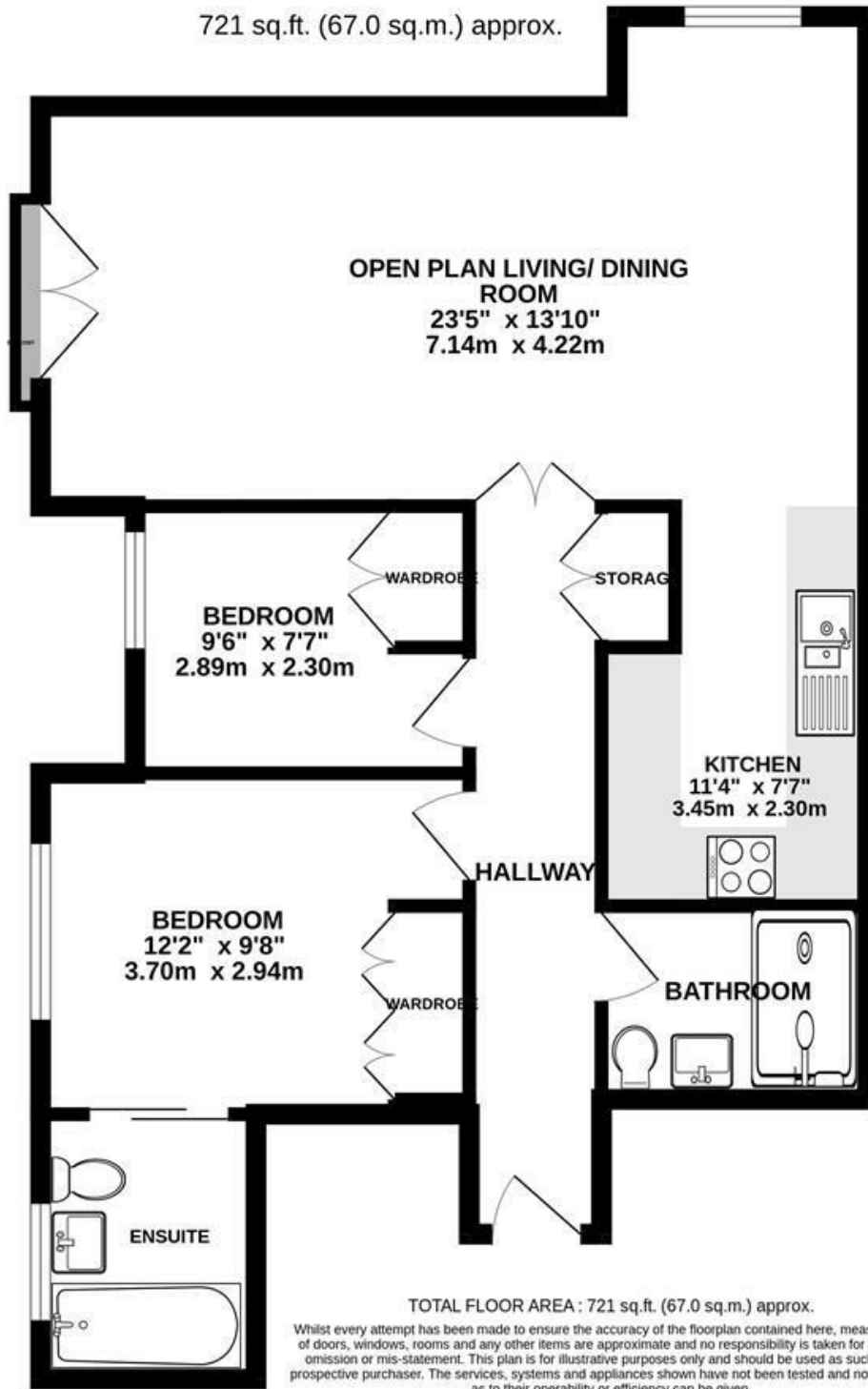
Parking & Garage

One allocated parking space and garage.





721 sq.ft. (67.0 sq.m.) approx.



These particulars, whilst believed to be accurate are set out as a general outline only for guidance and do not constitute any part of an offer or contract. Intending purchasers should not rely on them as statements of representation of fact, but must satisfy themselves by inspection or otherwise as to their accuracy. No person in this firm's employment has the authority to make or give any representation or warranty in respect of the property.

Material Information:
Council Tax Band: D
Tenure: Leasehold

