



Woodman Road

Brentwood, CM14 5AL

A four double bedroom new build home is located within walking distance of both Brentwood's Highstreet and Train Station. With a 10 year new build warranty in place the property benefits from lounge, utility room and spacious open plan kitchen diner with bifolding doors to rear garden. First floor accommodation includes three double bedrooms and spacious family bathroom. Second floor consists of master bedroom with ensuite. Externally the property boasts 50ft rear garden with patio to lawn, side access to front and off-street parking to front for two cars.

£2,800 PCM (per calendar month) - - Council Tax: C

Woodman Road

Brentwood, CM14 5AL



Entrance Hall

Entrance via door to front, stairs to first floor, doors to following accommodation.

Lounge

12'7 x 9 (3.84m x 2.74m)

Double glazed bay window to front, radiator, carpet flooring

Kitchen/Diner

23'6 x 14'10 (7.16m x 4.52m)

Double glazed bifolding doors to garden, double glazed window to rear, kitchen consists of a wide range of wall and base units, fitted with all NEFF appliances that include fridge freezer, dishwasher, oven. Neff gas hob with extractor above. Single drainer sink with mixer tap, Radiators, laminate floor throughout. .

Utility Room

8'8 x 5'10 (2.64m x 1.78m)

Provision for all freestanding appliances, boiler, laminate flooring.

WC

Low level WC, wash hand basin, laminate floor.

Landing

Stairs to ground and second floor.

Bedroom Two

15'00 x 9'10 (4.57m x 3.00m)

Double glazed window to front, radiator, carpet flooring.

Bedroom Three

11'10 x 10'01 (3.61m x 3.07m)

Double glazed window to rear, radiator, carpet flooring.

Bedroom Four

11'6 x 9'2 (3.51m x 2.79m)

Double glazed window to rear, radiator, carpet flooring.

Bathroom

9'2 x 6'00 (2.79m x 1.83m)

Double glazed frosted window to side, freestanding bath, low level WC, vanity wash hand basin, walk in shower cubicle, tiled floors, tiled walls.

Bedroom One

15'00 x 14'7 (4.57m x 4.45m)

Double glazed velux windows, radiator, carpet flooring.

Ensuite

8'1 x 4'7 (2.46m x 1.40m)

Double glazed window to rear, vanity wash hand basin, low level WC, shower cubicle, towel rail, tiled flooring.

Garden

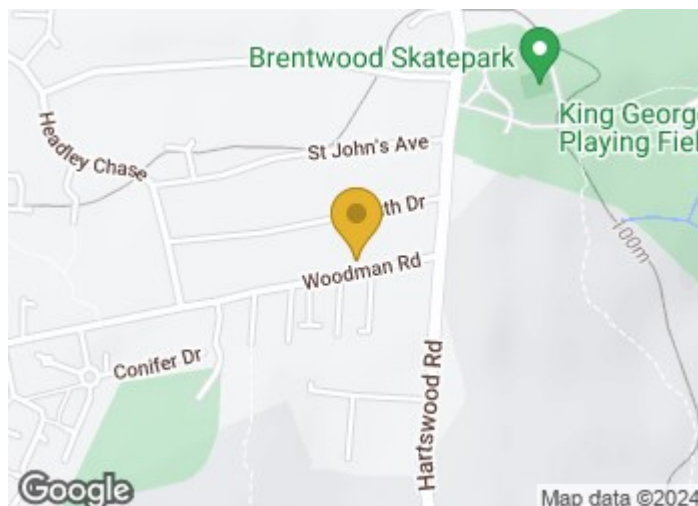
50ft (15.24mft)

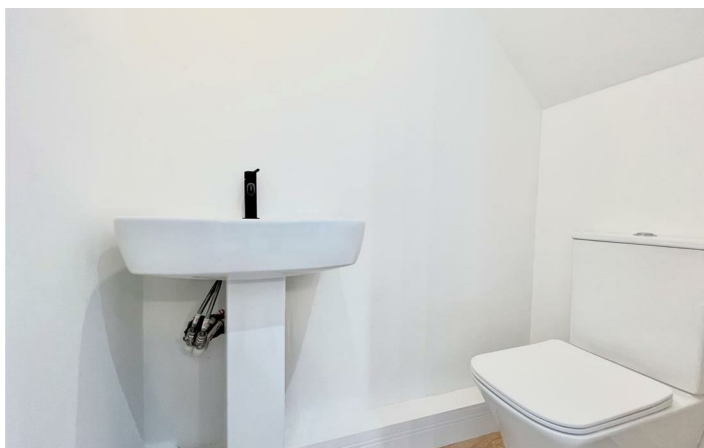
Patio to lawn, freestanding shed, side access to front.

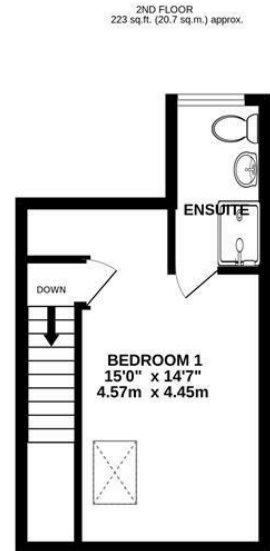
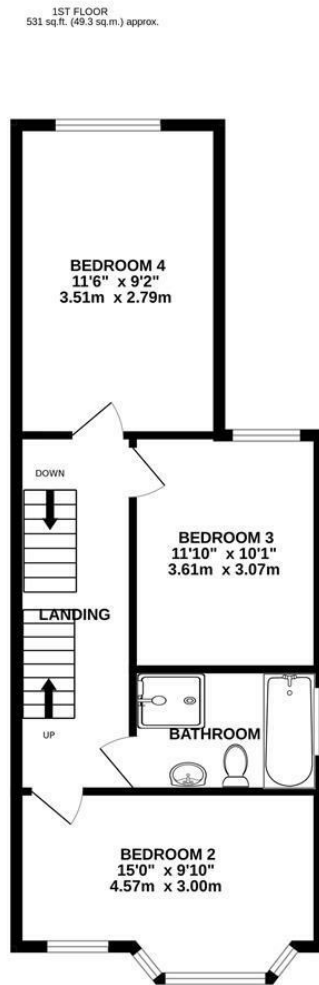
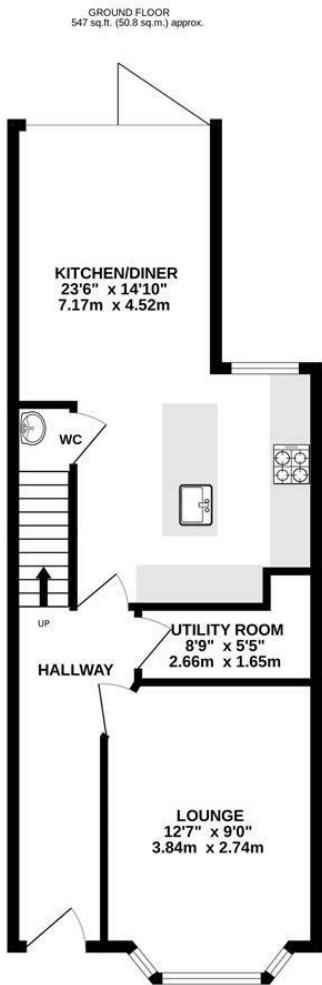
Driveway

Driveway for two cars.

Please note the internal photography shown in the marketing is of the adjacent property.







TOTAL FLOOR AREA: 1301 sq.ft. (120.9 sq.m.) approx.

Whilst every attempt has been made to ensure the accuracy of the floorplan contained here, measurements of doors, windows, rooms and any other items are approximate and no responsibility is taken for any error, omission or mis-statement. This plan is for illustrative purposes only and should be used as such by any prospective purchaser. The services, systems and appliances shown have not been tested and no guarantee as to their operability or efficiency can be given.
Made with Metropix ©2023



These particulars, whilst believed to be accurate are set out as a general outline only for guidance and do not constitute any part of an offer or contract. Intending purchasers should not rely on them as statements of representation of fact, but must satisfy themselves by inspection or otherwise as to their accuracy. No person in this firm's employment has the authority to make or give any representation or warranty in respect of the property.

Material Information:
Council Tax Band: C
Tenure:

