



Carew Road, W13

£640,000

Impressive first floor maisonette located in this prime location adjacent to both Lammas and Walpole Parks. Offering over 940 sq ft of space which comprises of two double bedrooms, reception room, kitchen and bathroom.

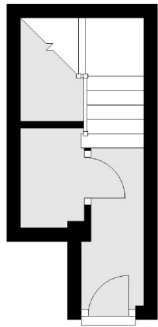
Close to Walpole Park, Lammas Park, and Ealing Common, the property is ideally positioned for access to Northfields, South Ealing and Ealing Broadway tube stations.

Features

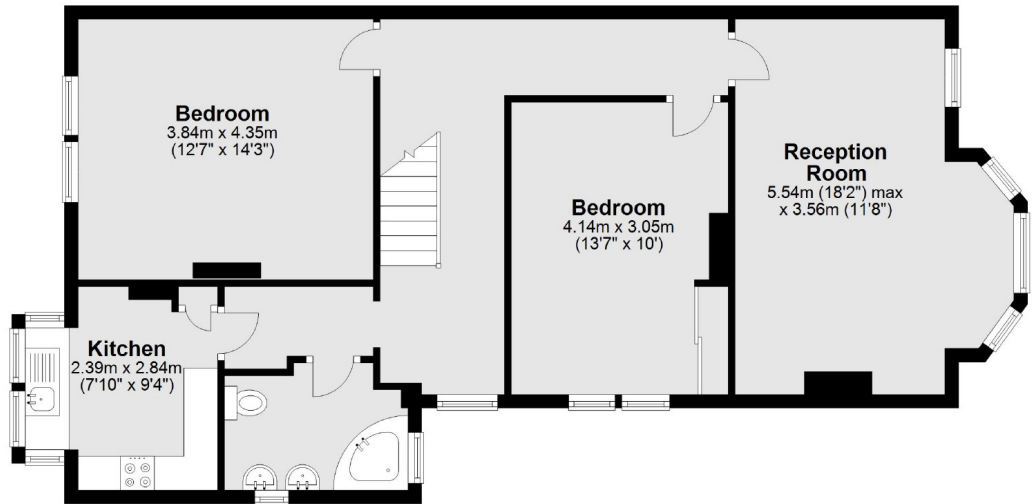
- First Floor Maisonette
- Two Double Bedrooms
- Period Features
- Secluded Garden
- No Onward Chain
- Gated Parking
- Share Of Freehold

Carew Road, London, W13

Ground Floor



First Floor



Total area: approx. 87.6 sq. metres (942.8 sq. feet)