

## Dane Road, UB1

£532,500

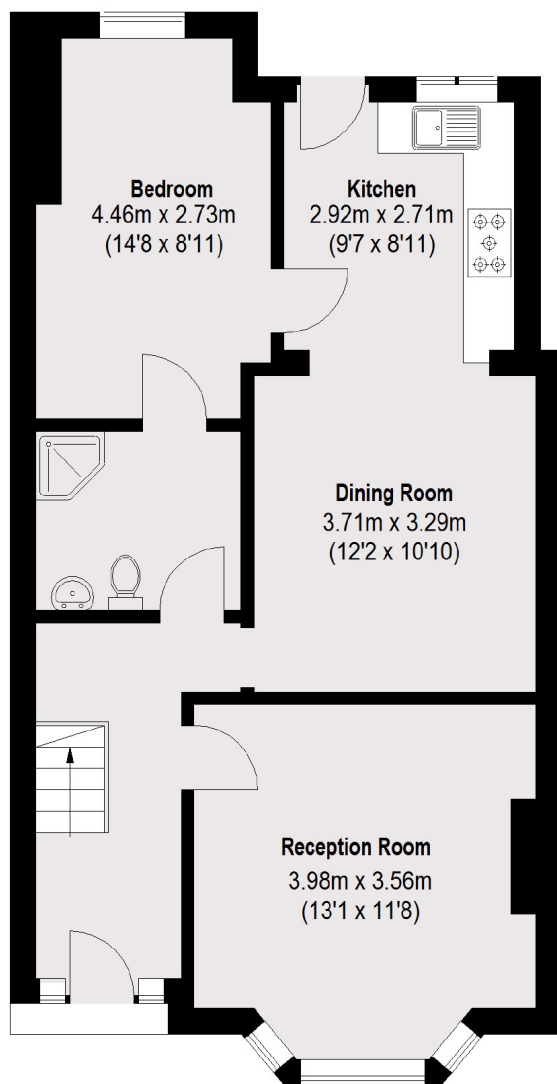
This four bedroom, two bathroom family home has a separate living room, kitchen/dining room leading out to a hard-landscaped garden, with useful outbuilding and off-street parking. The property has the added potential to extend further to the rear and into the loft (STPP).

Located close to local shops, schools, amenities and Southall Station and future cross rail link. Bus links provide easy access to Ealing and Greenford Underground and Heathrow.

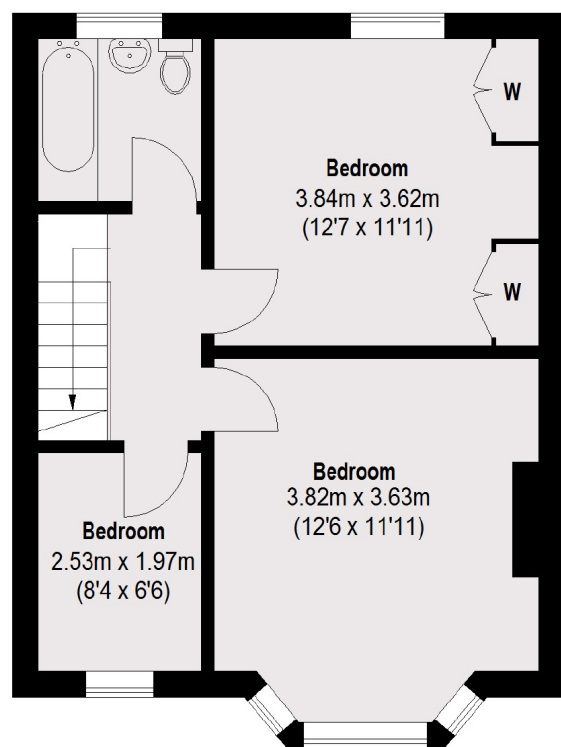
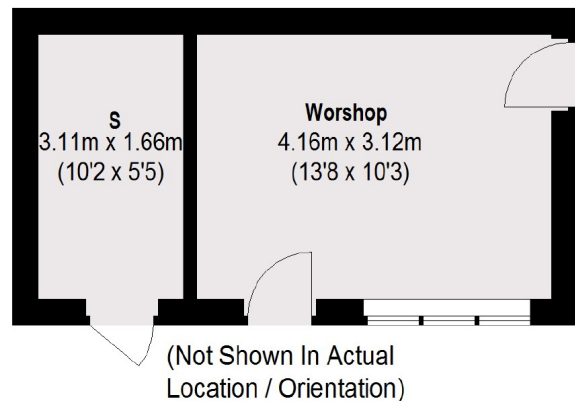
### Features

- Four Bedrooms
- Two Bathrooms
- Kitchen/Dining Room
- Rear Garden
- Scope To Extend (STPP)
- Off Street Parking

## Dane Road, Southall, UB1



Ground Floor



First Floor

Total area (approx.): 108.38 sq. m (1166 sq. ft)  
Outbuilding: 19.11 sq. m (206 sq. ft)

### Contact

To arrange a viewing call our office on the number below or visit our website.



Energy Rating: D. We aim to make our particulars both accurate and reliable. However they are not guaranteed; nor do they form part of an offer or contract. If you require clarification on any points then please contact us, especially if you're traveling some distance to view. Please note that appliances and heating systems have not been tested and therefore no warranties can be given as to their good working order.