

Haslemere Avenue, W7

£507 Per week

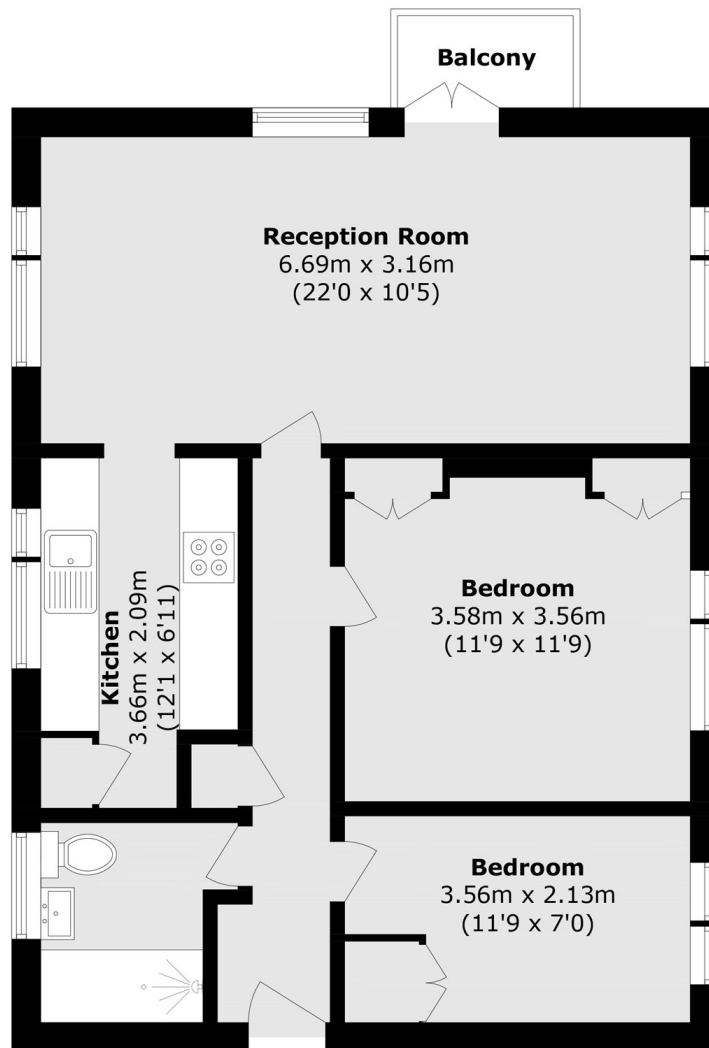
Modern two bedroom apartment in a purpose-built block, featuring a private balcony, bright living spaces, contemporary fittings and off-street parking. Conveniently located near transport links, shops, and local amenities.

Haslemere Avenue is conveniently positioned close to the amenities of Boston Road, while the extensive open spaces of Osterley Park are only a short distance away. Boston Manor Underground Station is within easy reach.

Features

Recently Refurbished
Two Bedrooms
Second Floor
Balcony
Large Reception
Off-Street Parking

Haslemere Avenue, London, W7



Total area (approx.): 61.1 sq. m (657.5 sq. ft)

Balcony (approx.): 1.7 sq. m (18.5 sq. ft)