



## Factory Yard, W7

£461 Per week

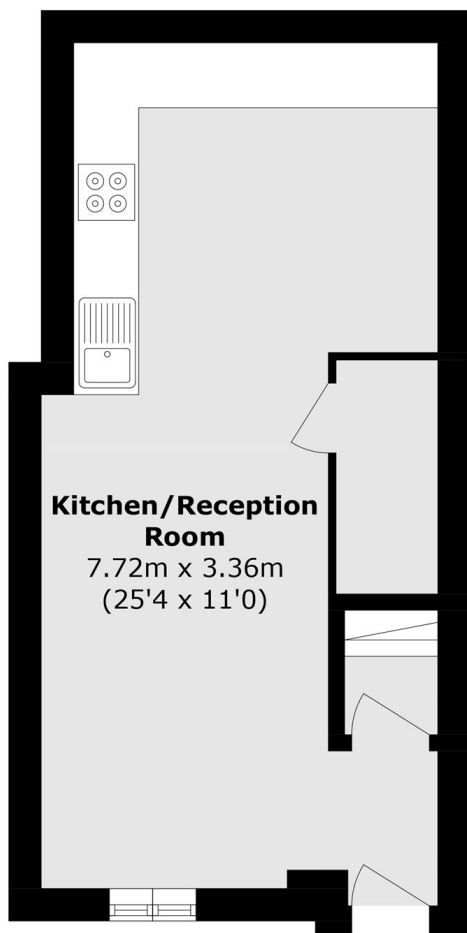
A beautifully presented two-bedroom home situated in a highly sought-after area of Hanwell. Recently refurbished, the property features an open-plan kitchen with spacious living area and off-street parking.

Nestled in the heart of Hanwell, Factory Yard enjoys leafy surroundings, nearby parks, and excellent transport links via Hanwell Station and local bus routes, providing easy access to Ealing, Heathrow, and Central London.

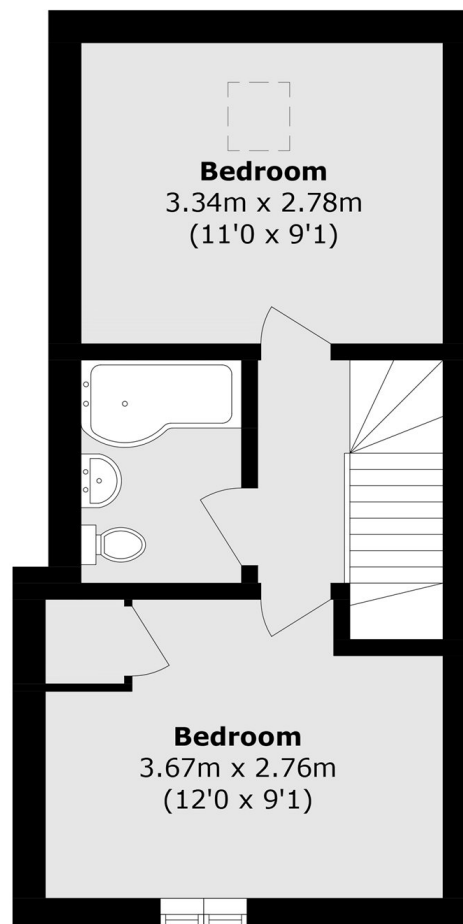
### Features

- Two Bedrooms
- Recently Refurbished
- Open-Plan Reception
- Modern Kitchen
- Off Street Parking
- Close to Station

# Factory Yard, London, W7



**Ground Floor**



**First Floor**

Total area (approx.): 54.9 sq. m (590.9 sq. ft)