



Windermere Road, W5

£830 Per week

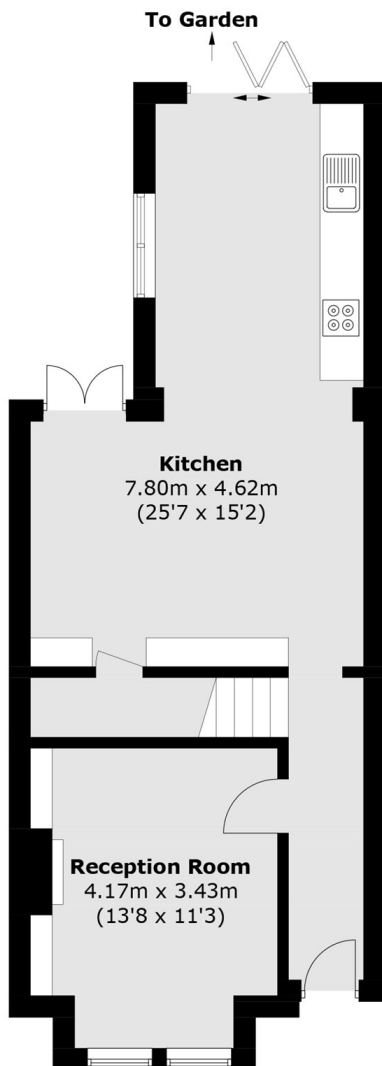
A modernised four bedroom house arranged over three floors, offering versatile living space and a low maintenance garden, ideal for families seeking contemporary comfort and convenience in a desirable location.

Situated in the heart of Ealing, Windermere Road offers excellent transport links, green spaces, respected schools and a vibrant mix of shops, cafés, and local amenities nearby for residents daily.

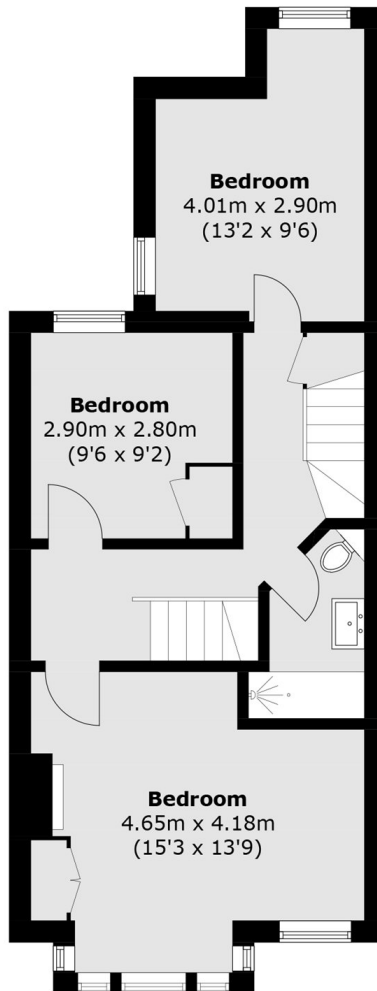
Features

- Four Bedrooms
- Two Bathrooms
- Split Over Three Floors
- Modernised Throughout
- Private Garden
- Close to Station

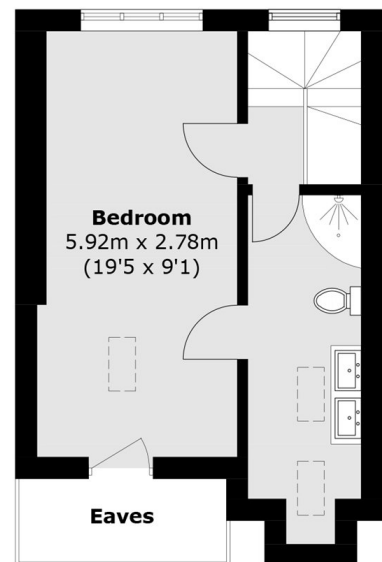
Windermere Road, London, W5



Ground Floor



First Floor



Second Floor

Total area (approx.): 129.2 sq. m (1,390.7 sq. ft)
(Excluding Eaves)