



## Brownell Place, W7

£299,950

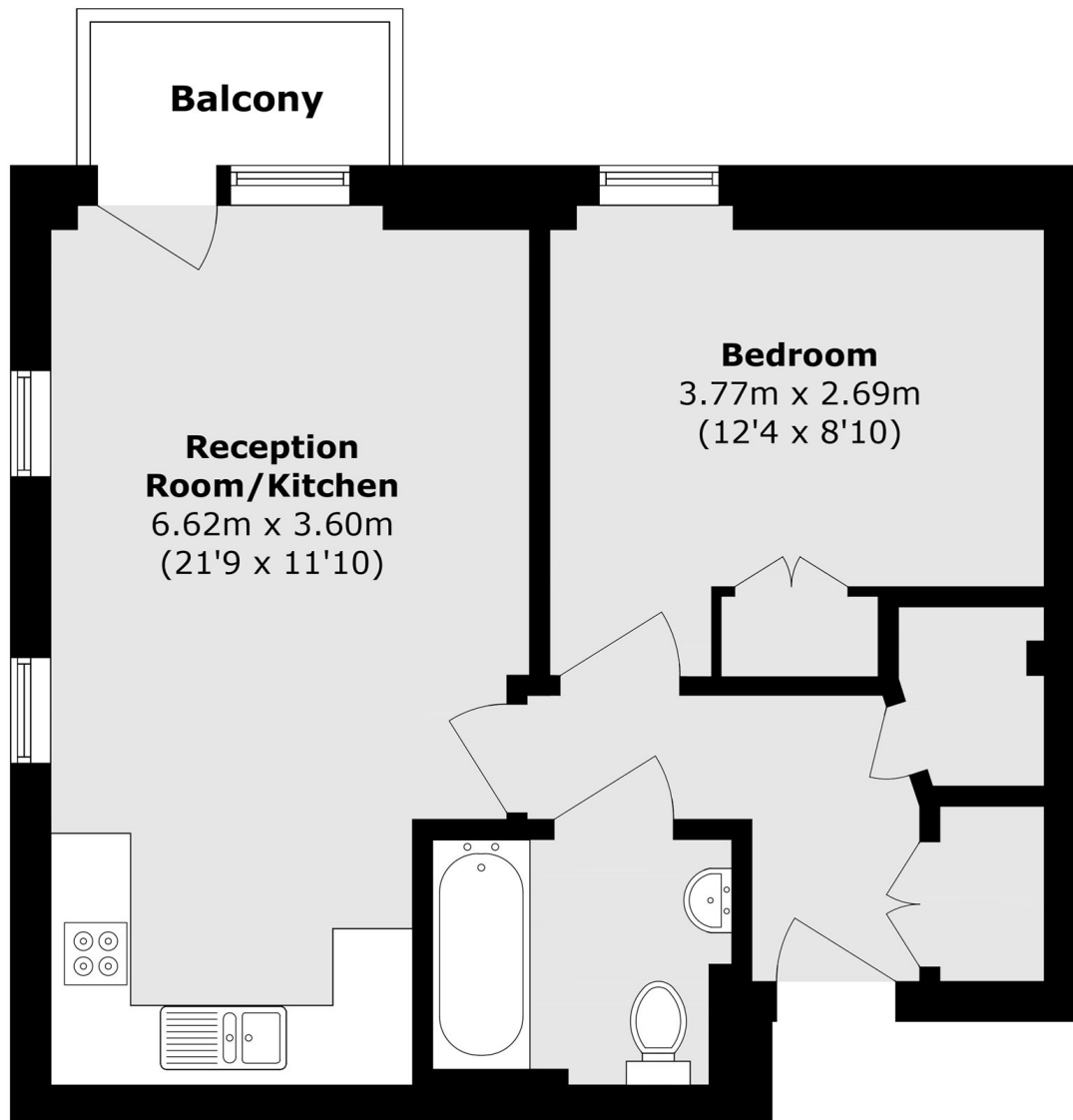
A recently built apartment offering engineered wood flooring throughout the living areas and luxury carpets in the bedroom. Further benefits include a private balcony and top of the range appliances.

Situated in a private gated development in the family area of Olde Hanwell. Brownell Place is located just under a mile from Hanwell Station and 1 mile from Boston Manor Tube.

### Features

- One Bedroom
- Open-Plan Reception
- New Development
- Private Balcony
- Off Street Parking
- Close to Station

Brownell Place,  
London, W7



Total area (approx.): 46.9 sq. m (504.8 sq. ft)

Balcony area (approx.): 2.4 sq. m (25.8 sq. ft)