



Southdown Avenue, W7

£550,000

Impressive three bedroom flat set in this quiet residential road adjacent to Elthorne Park and Boston Manor Station.

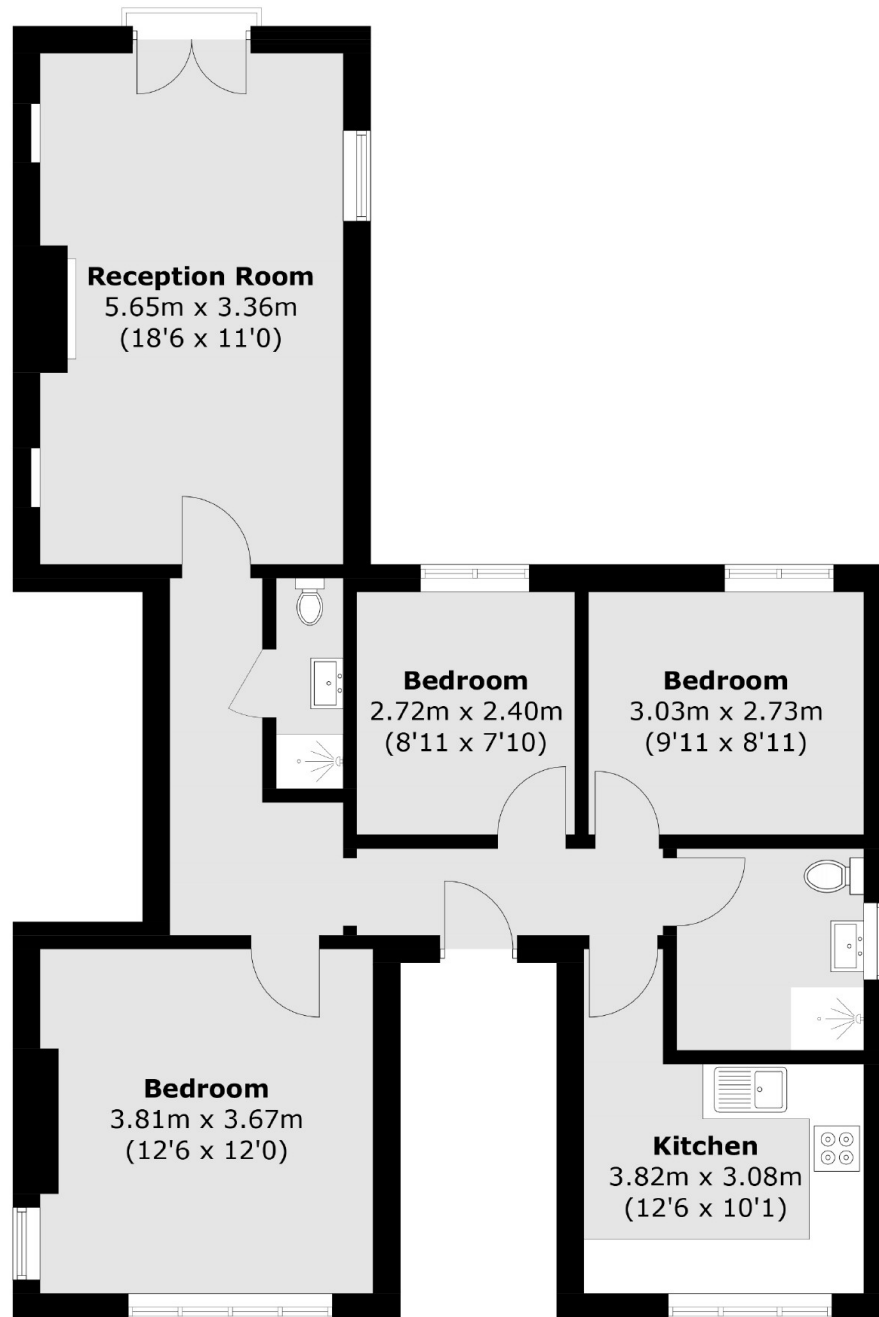
Offering over 800 sq.ft of living space which has recently been refurbished including a new kitchen/bathroom and a private West Facing Garden.

Offered with new long lease and with no onward chain, viewing is recommended.

Features

Three Bedroom Flat
Recently Refurbished
West Facing Garden
Excellent Schools
Close to Piccadilly Line
No Onward Chain

Southdown Avenue,
London, W7



Total area (approx.): 75.1 sq. m (808.4 sq. ft)

Dexters

Northfields
140 Northfield Avenue
London
W13 9SB
Sales
020 8545 8588

Energy Rating: C. We aim to make our particulars both accurate and reliable. However they are not guaranteed; nor do they form part of an offer or contract. If you require clarification on any points then please contact us, especially if you're traveling some distance to view. Please note that appliances and heating systems have not been tested and therefore no warranties can be given as to their good working order.

 **RICS** | Regulated
Estate Agent
and Letting Agent

[dexters.co.uk](https://www.dexters.co.uk)