



Burnham Way, W13

£950,000

A spacious four bedroom family home with original period features throughout, two reception rooms, kitchen, full-width conservatory, two bathrooms and a west-facing garden.

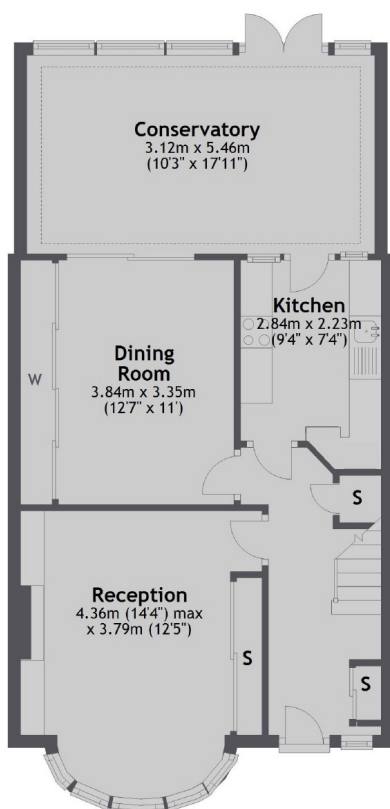
Conveniently located for Northfields Underground station along with the amenities of its high street, good schools and the green open spaces of both Blondin and Boston Manor Park.

Features

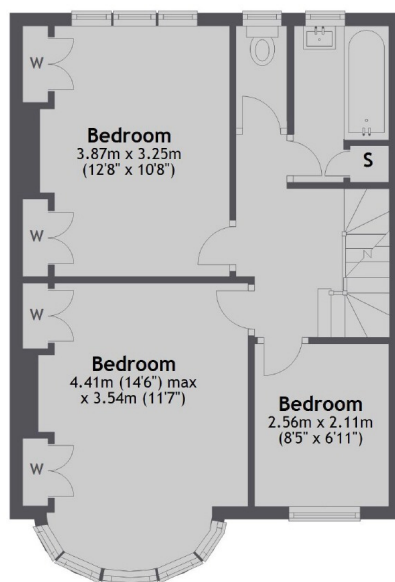
- Period Property
- Four Bedrooms
- Two Reception Rooms
- Full-Width Conservatory
- Two Bathrooms
- West-Facing Garden

Burnham Way, London, W13

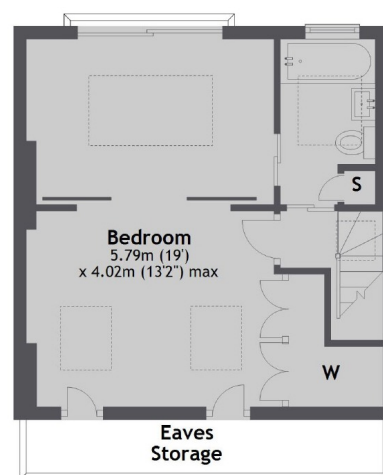
Ground Floor



First Floor



Second Floor



Total area: approx. 136.0 sq. metres (1464.3 sq. feet)