



## Sydney Road, W13

£825,000

An Edwardian three bedroom semi-detached house located on the West facing side of this popular residential road.

Extended to the ground floor with scope to convert the loft as many neighbours have done.

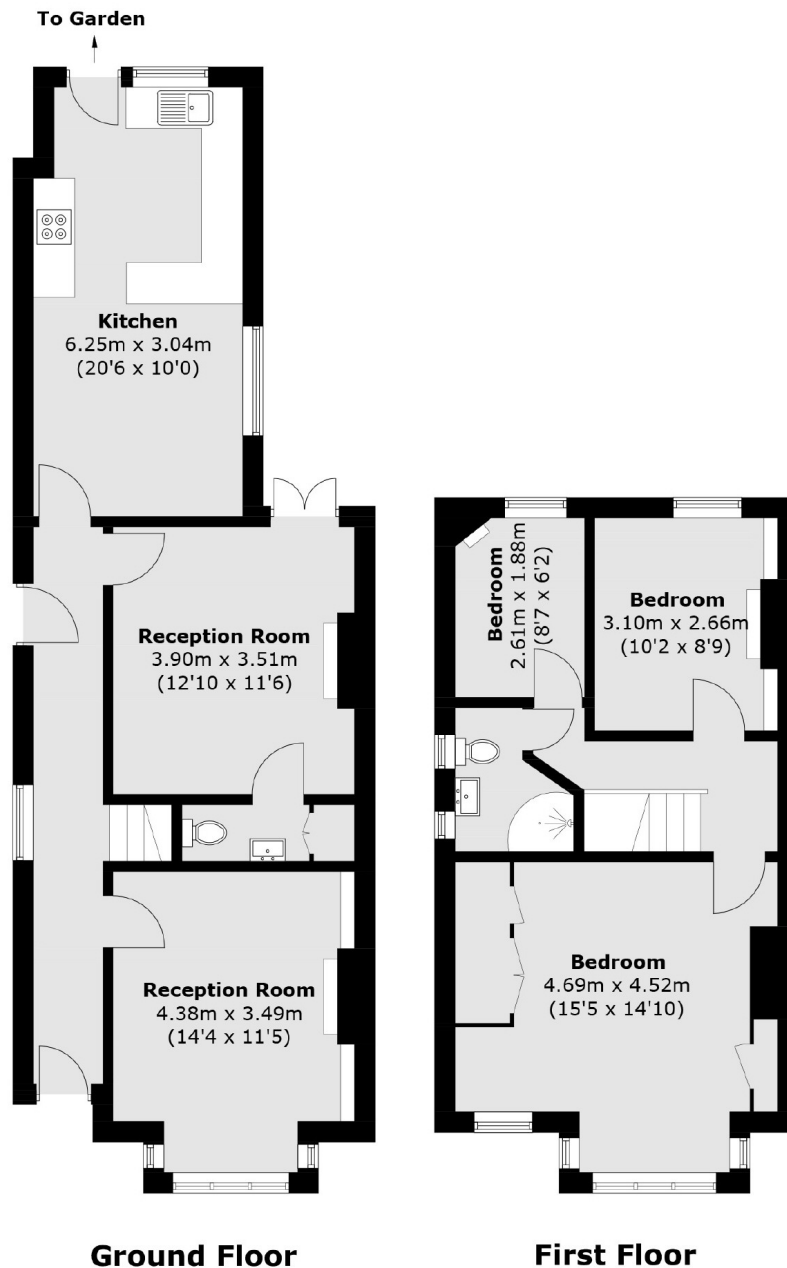
Set in an increasingly popular area close to outstanding primary and secondary schools and the Elizabeth line at West Ealing station.

Available with no onward chain.

### Features

Three Bedroom  
Semi Detached  
West Facing Garden  
Excellent Schools  
Close to Transport  
No Chain

Sydney Road,  
London, W13



Total area (approx.): 103.3 sq. m (1,111.9 sq. ft)

**Dexters**

Northfields  
140 Northfield Avenue  
London  
W13 9SB  
Sales  
020 8545 8588

Energy Rating: D. We aim to make our particulars both accurate and reliable. However they are not guaranteed; nor do they form part of an offer or contract. If you require clarification on any points then please contact us, especially if you're traveling some distance to view. Please note that appliances and heating systems have not been tested and therefore no warranties can be given as to their good working order.

**RICS** | Regulated  
Estate Agent  
and Letting Agent

dexters.co.uk