



Midhurst Road, W13

£1,100,000

A five bedroom Edwardian house which is extremely well located for excellent local schools and the amenities of Northfields.

Recently redecorated so ideal for purchasers looking to move straight in and make their own changes later.

Benefits from a good sized West facing rear garden and a no chain sale so early viewing is advised.

Features

- Edwardian House
- Five Bedrooms
- West Facing Garden
- Excellent School Catchment
- Recently Decorated
- No Onward Chain



Midhurst Road, W13

You will find this impressive Edwardian house on the West side of the street.

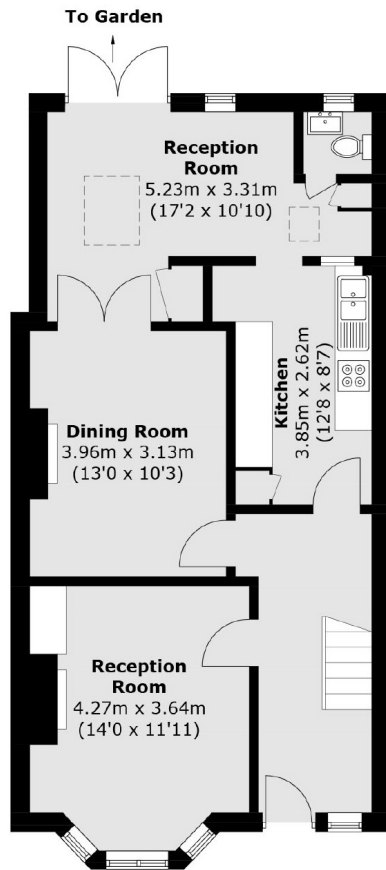
The reception hall leads through to the front reception which has a feature period fireplace as does the dining room. The fitted kitchen interconnects to the rear extension which opens out to the garden. There is also a guest WC.

On the two upper floors there are five bedrooms, the main bathroom and a shower room.

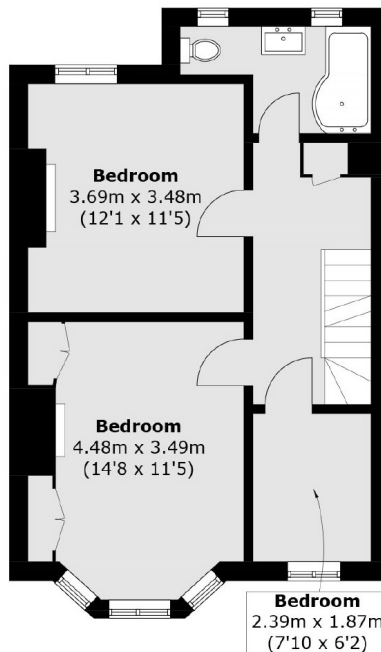
Located in arguably the best spot in Northfields, close to all amenities. Viewing is essential.



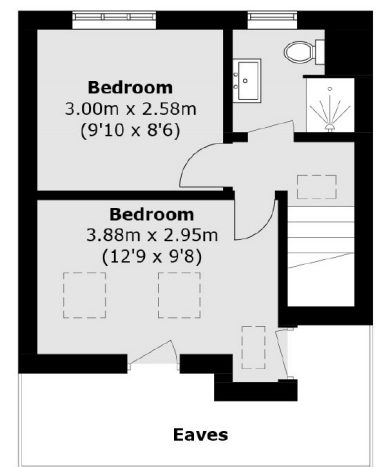
Midhurst Road, London, W13



Ground Floor



First Floor



Second Floor

Total area (approx.): 135.8 sq. m (1461.7 sq. ft)
(Excluding Eaves)