



Factory Yard, W7

£346 Per week

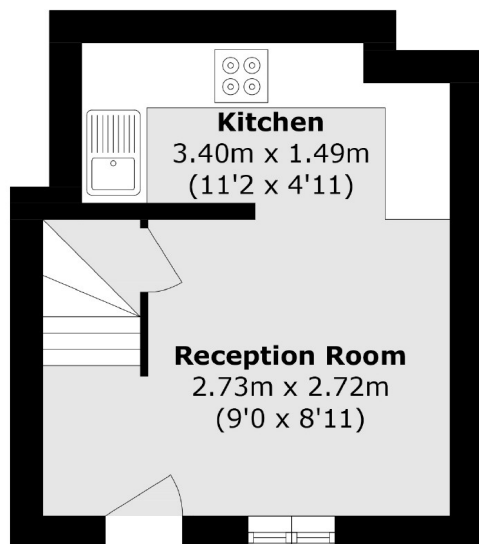
Newly refurbished one bedroom cottage offering modern interiors with classic charm. Ideally located close to excellent transport links, perfect for single professionals or a couple seeking comfort and convenience.

Nestled in Hanwell, Factory Yard offers leafy surroundings, parks and excellent transport links via Hanwell Station and bus routes, with easy access to Ealing, Heathrow and Central London.

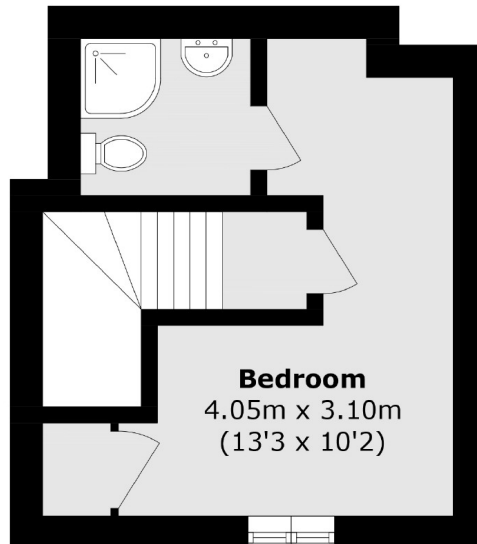
Features

- Newly Refurbished Cottage
- Close to Station
- Unfurnished
- Private Entrance
- Local Amenities

Factory Yard, London, W7



Ground Floor



First Floor

Total area (approx.): 31.4 sq. m (337.9 sq. ft)