



## Murray Terrace, W5

£799,950

End of terrace three bedroom house located on the South facing side of this popular residential road.

Planning permission has been granted to extend the house to the rear, first floor and to the loft which would create an outstanding home to be proud of.

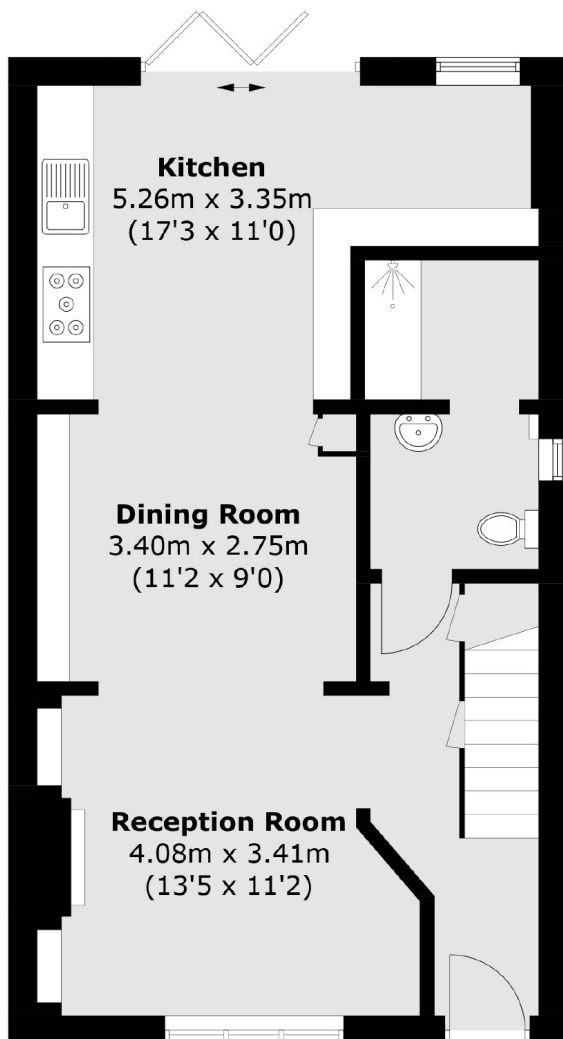
Benefits from a circa 50 ft. South facing garden and a no chain sale.

Well positioned for public transport and excellent schools.

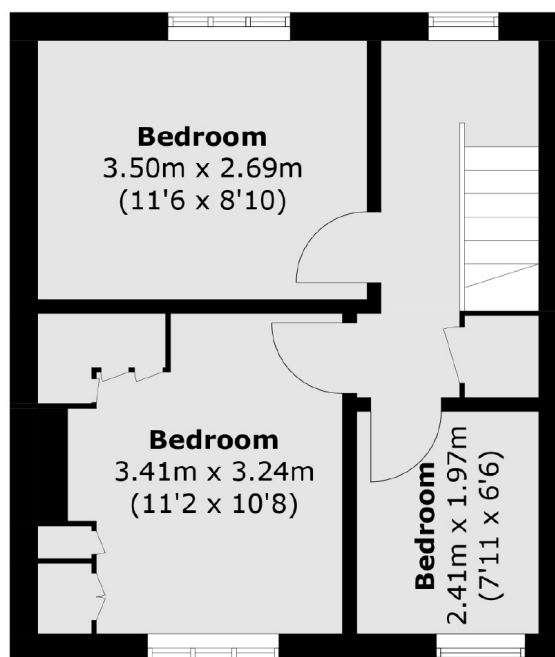
### Features

End of Terrace  
South Facing Garden  
Planning Approved for  
Extensions  
Close to Transport  
Excellent Schools  
No Onward Chain

# Murray Terrace, London, W5



**Ground Floor**



**First Floor**

Total area (approx.): 87.0 sq. m (936.4 sq. ft)