



Highland Avenue, W7

£761 Per week

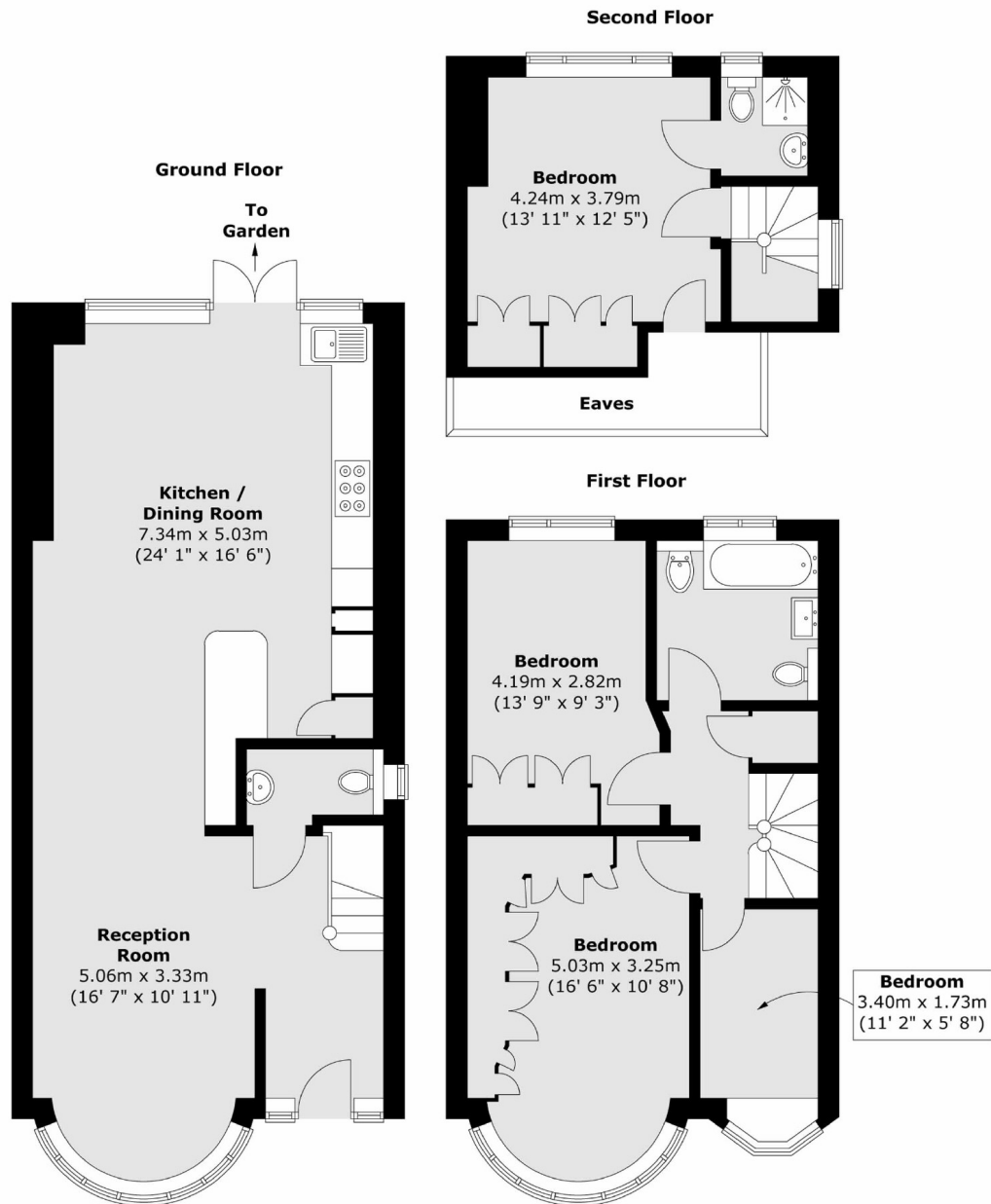
Stylish four-bedroom home boasting a spacious reception, open-plan kitchen, loft en-suite, modern family bathroom, private garden, and permit parking, ideally positioned on sought-after Highland Avenue in the heart of Hanwell.

Set on peaceful, tree-lined Highland Avenue, moments from Brent Lodge Park and Bunny Park, with excellent schools, cafés, and shops nearby, plus superb Elizabeth Line links via West Ealing and Castle Bar Park.

Features

- Four Bedrooms
- Two Bathrooms
- Modern Finish
- Excellent Transport Links
- Spacious Throughout
- Large Garden

Highland Avenue, London, W7



Total area (approx.) : 123.6 sq. m (1330 sq. ft)
(Excluding eaves)

Dexters

Northfields
140 Northfield Avenue
London
W13 9SB
Lettings
020 8545 8589

Energy Rating: D. We aim to make our particulars both accurate and reliable. However they are not guaranteed; nor do they form part of an offer or contract. If you require clarification on any points then please contact us, especially if you're traveling some distance to view. Please note that appliances and heating systems have not been tested and therefore no warranties can be given as to their good working order.

 **RICS** | Regulated
Estate Agent
and Letting Agent

[dexters.co.uk](https://www.dexters.co.uk)