



Cawdor Crescent, W7

£1,050,000

This attractive semi detached four bedroom house will be a wonderful family home for the next owners.

Benefits from off street parking, a garage and a large South facing garden.

Also comprises of three receptions, kitchen, guest WC and bathroom. With scope to extend to the rear and loft.

A popular location close to Boston Manor and Northfields stations for the Piccadilly line and in close proximity to outstanding schools.

Features

Semi Detached
Four Bedrooms
South Facing Garden
Garage
Off Street Parking
Excellent Location



Cawdor Crescent, W7

On arrival, you are greeted by the entrance porch to the reception hall that leads to the two interconnecting reception rooms.

The inner lobby leads through to the kitchen and rear garden room. There is also a ground floor WC and access to the garage. Upstairs, there are four good sized bedrooms and the bathroom. Many neighbouring houses have extended into the large loft area.

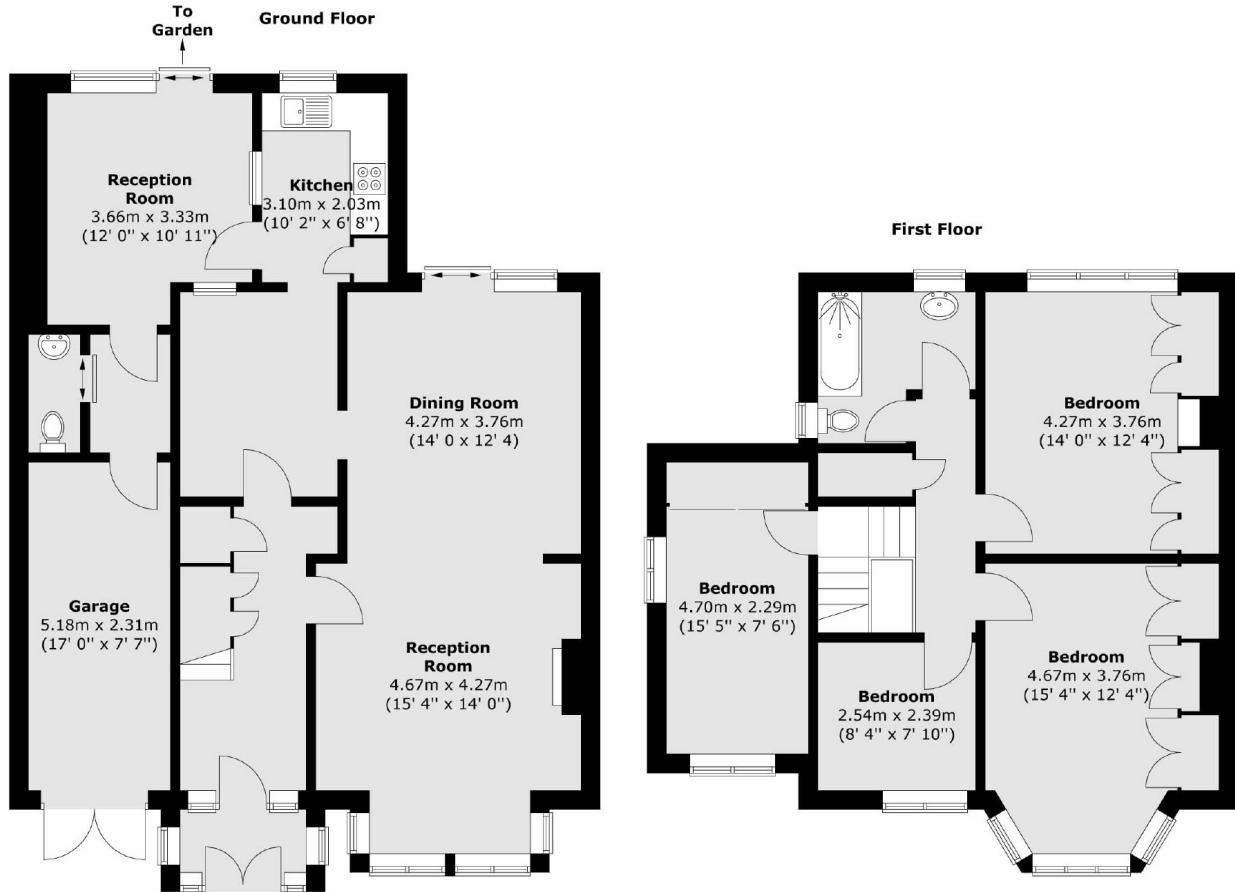
The South facing rear garden is well established and feels like a place to spend lots of time.

Ready for new owners to put their mark on, in a popular location close to excellent schools, parks and transport.

Viewing is strongly advised.



Cawdor Crescent, London, W7



Total area (approx.) : 160.5 sq. m (1728 sq. ft)

Dexters

Northfields
140 Northfield Avenue
London
W13 9SB
Sales
020 8545 8588

Energy Rating: E. We aim to make our particulars both accurate and reliable. However they are not guaranteed; nor do they form part of an offer or contract. If you require clarification on any points then please contact us, especially if you're traveling some distance to view. Please note that appliances and heating systems have not been tested and therefore no warranties can be given as to their good working order.

 **RICS** | Regulated
Estate Agent
and Letting Agent

[dexters.co.uk](https://www.dexters.co.uk)