



## Cherry Garth, TW8

£355,000

Ground floor two bedroom flat which benefits from a West facing private garden in excess of 100 ft.

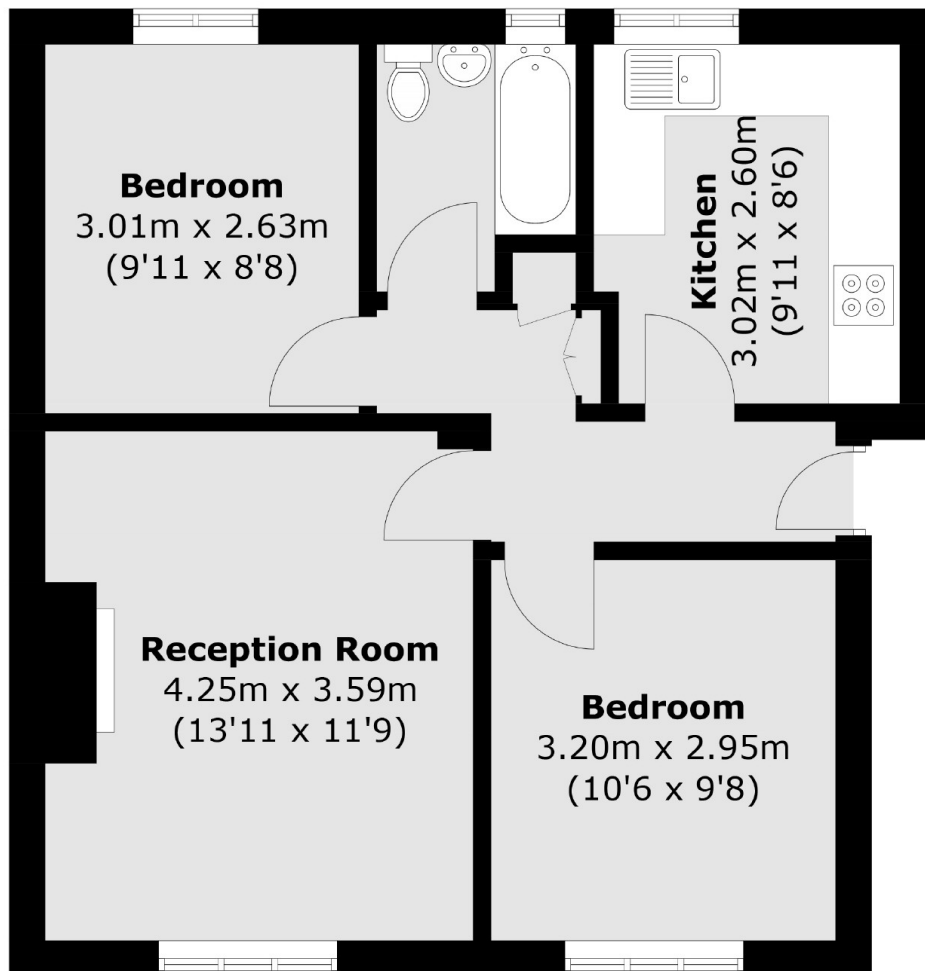
Comprises of entrance hall, living room, kitchen and bathroom with both bedrooms of double proportions.

Offered with long lease and no onward chain.

### Features

Ground Floor Flat  
Two Double Bedrooms  
Long Lease  
100 ft+ Garden  
Residents Parking  
No Onward Chain

Cherry Garth,  
Brentford, TW8



Total area (approx.): 51.6 sq. m (555.4 sq. ft)

**Dexters**

Northfields  
140 Northfield Avenue  
London  
W13 9SB  
Sales  
020 8545 8588

Energy Rating: C. We aim to make our particulars both accurate and reliable. However they are not guaranteed; nor do they form part of an offer or contract. If you require clarification on any points then please contact us, especially if you're traveling some distance to view. Please note that appliances and heating systems have not been tested and therefore no warranties can be given as to their good working order.

 **RICS** | Regulated  
Estate Agent  
and Letting Agent

[dexters.co.uk](https://www.dexters.co.uk)