



Brownell Place, W7

£425,000

A two bedroom, two bathroom apartment situated on the ground floor with underground parking.

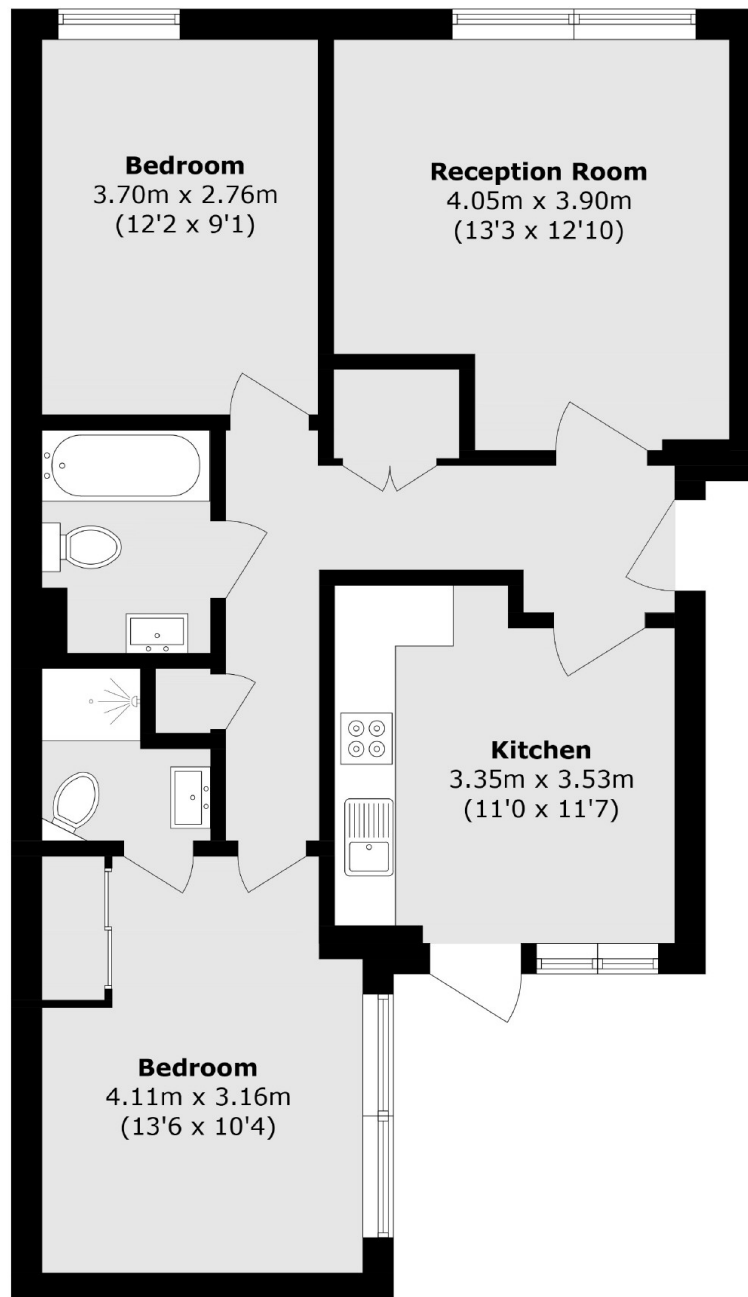
This property has an eat-in kitchen, separate reception room and a private front and rear garden.

Conveniently located close to the Elizabeth line at Hanwell station and the Piccadilly line at Boston Manor station, as well as St Mark's and Oaklands Primary schools and an array of shops on the Broadway.

Features

- 700+ Sq Ft
- Two Bedrooms
- Two Bathrooms
- Underground Parking
- Long Lease
- Private Garden

Brownell Place, London, W7



Total area (approx.): 67.09 sq. m (730.8 sq. ft)

Dexters

Northfields
140 Northfield Avenue
London
W13 9SB
Sales
020 8545 8588

Energy Rating: . We aim to make our particulars both accurate and reliable. However they are not guaranteed; nor do they form part of an offer or contract. If you require clarification on any points then please contact us, especially if you're traveling some distance to view. Please note that appliances and heating systems have not been tested and therefore no warranties can be given as to their good working order.

 **RICS** | Regulated
Estate Agent
and Letting Agent

[dexters.co.uk](https://www.dexters.co.uk)