



Leighton Road, W13

£450,000

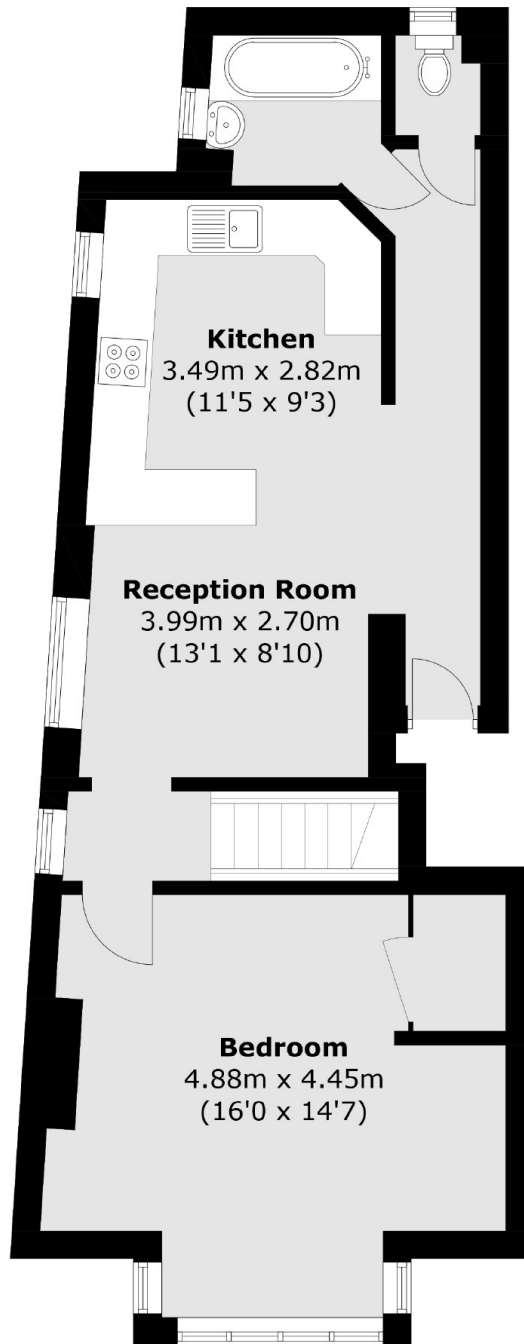
This well located split-level Victorian conversion flat offers approximately 726 sq ft of living space. The property features its own entrance, two bedrooms, a kitchen/reception room, and a separate WC and bathroom. Includes a share of the freehold and has potential to extend (STPP). Additionally, it presents an excellent opportunity for a loft extension and is available chain-free

Well located, just under a mile away from West Ealing train station (Elizabeth line) and Northfields tube. Also ideally located for great schools and the local parks and shopping facilities.

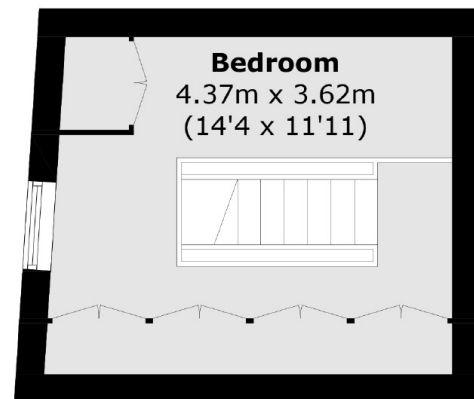
Features

- Victorian Conversion
- Two Bedroom
- Own Entrance
- Potential To Extend (STPP)
- Elizabeth Line 0.7 mile
- Piccadilly Line 0.6 mile
- Chain Free

Leighton Road,
London, W13



First Floor



Second Floor

Total area (approx.): 67.5 sq. m (726.6 sq. ft)

Dexters

Northfields
140 Northfield Avenue
London
W13 9SB
Sales
020 8545 8588

Energy Rating: D. We aim to make our particulars both accurate and reliable. However they are not guaranteed; nor do they form part of an offer or contract. If you require clarification on any points then please contact us, especially if you're traveling some distance to view. Please note that appliances and heating systems have not been tested and therefore no warranties can be given as to their good working order.

 **RICS** | Regulated
Estate Agent
and Letting Agent

dexters.co.uk