



Somerset Road, W13

£807 Per week

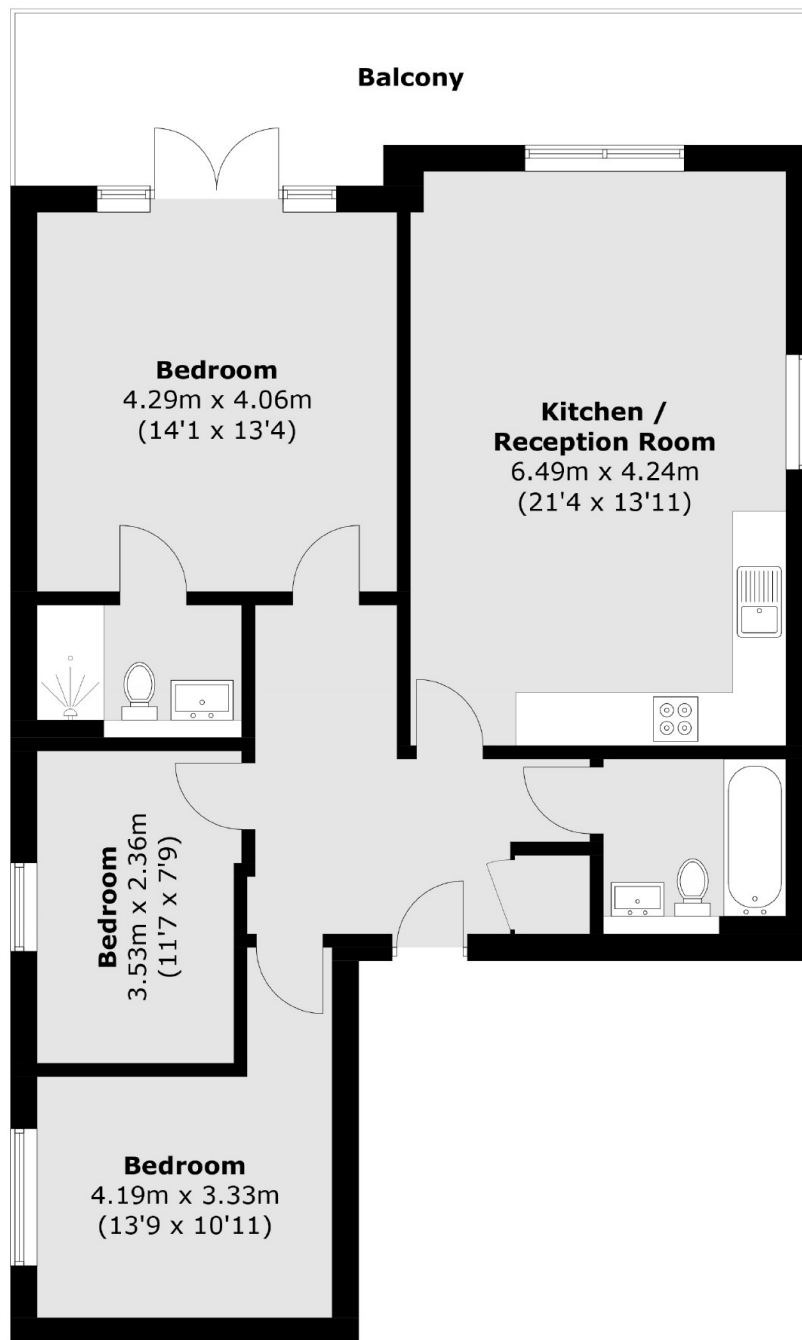
Newly built three-bedroom apartment boasting a stylish finish, featuring a spacious balcony with pleasant views of communal gardens. Furnished and parking available.

Somerset Road is a quiet residential road close to Walpole and Lammas Parks. It is well positioned for Ealing Broadway, West Ealing or Northfields stations.

Features

- New Build
- Three Bedrooms
- Two Bathrooms
- Furnished
- Close to Station
- Parking Available

Somerset Road,
London, W13



Total area (approx.): 85.6 sq. m (921.4 sq. ft)
Balcony area (approx.): 15.2 sq. m (163.6 sq. ft)

Dexters

Northfields
140 Northfield Avenue
London
W13 9SB
Lettings
020 8545 8589

Energy Rating: B. We aim to make our particulars both accurate and reliable. However they are not guaranteed; nor do they form part of an offer or contract. If you require clarification on any points then please contact us, especially if you're traveling some distance to view. Please note that appliances and heating systems have not been tested and therefore no warranties can be given as to their good working order.

 **RICS** | Regulated
Estate Agent
and Letting Agent

[dexters.co.uk](https://www.dexters.co.uk)