



Drayton Avenue, W13

£807 Per week

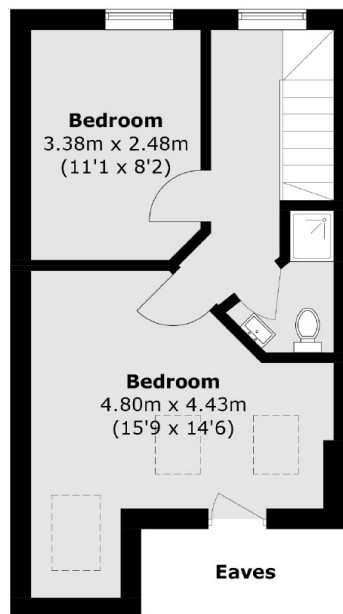
A Victorian home with four bedrooms and two bathrooms and living space over three floors located in the popular and sought after Drayton's area. There are period features throughout, with fireplaces and sash windows adding character.

Drayton Avenue is perfectly positioned just moments from West Ealing station offering Elizabeth Line. Close by is the Waitrose superstore and Drayton Green Primary School.

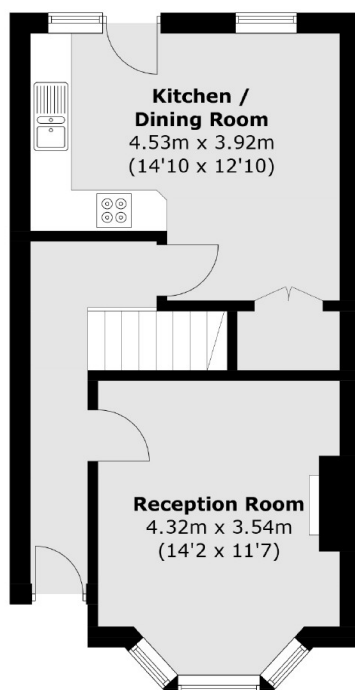
Features

- Four bedrooms
- Two Bathrooms
- Close to Elizabeth Line
- Garden
- Separate Kitchen
- Period Features

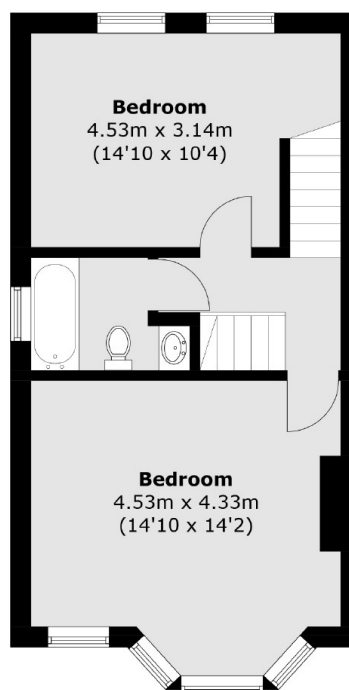
Drayton Avenue,
London, W13



Second Floor



Ground Floor



First Floor

Total area (approx.): 113.9 sq. m (1,226.0 sq. ft)
(Excluding Eaves)

Dexters

Northfields
140 Northfield Avenue
London
W13 9SB
Lettings
020 8545 8589

Energy Rating: E. We aim to make our particulars both accurate and reliable. However they are not guaranteed; nor do they form part of an offer or contract. If you require clarification on any points then please contact us, especially if you're traveling some distance to view. Please note that appliances and heating systems have not been tested and therefore no warranties can be given as to their good working order.

 **RICS** | Regulated
Estate Agent
and Letting Agent

dexters.co.uk