



Culmington Road, W13

£425,000

Walpole Lodge is perfectly located overlooking the open spaces of Walpole Park.

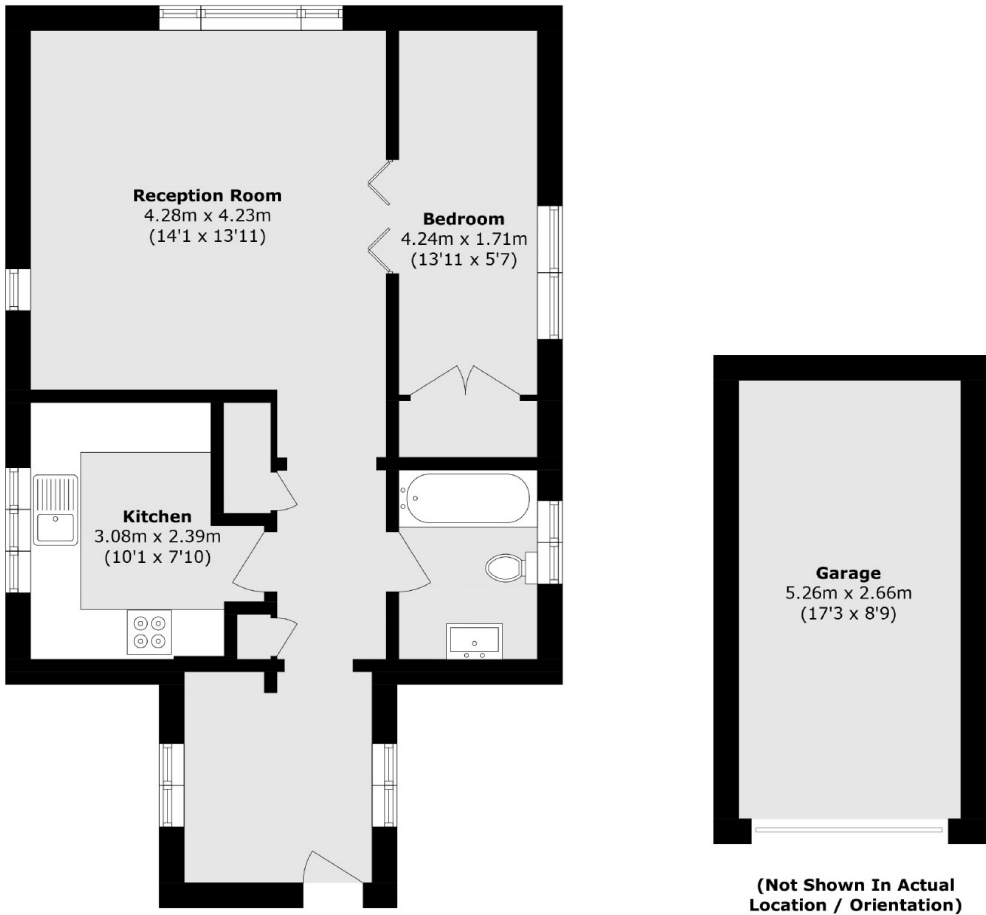
This is a spacious and well presented one bedroom flat on the first floor which enjoys lots of natural light.

Benefits to note include the useful garage, long lease and multiple choice of shopping and transport options at Ealing Broadway station (District, Central and Elizabeth line), West Ealing station (Elizabeth line) and the Piccadilly line for both South Ealing and Northfields stations.

Features

- Spacious One Bedroom
- Overlooking Walpole Park
- Garage
- Long Lease
- First Floor
- Multiple Transport Links

Culmington Road,
London, W13



Total area (approx.): 51.77sq.m (556.4sq.ft)
Garage area (approx.): 13.99sq.m (149.6sq.ft)