



## Westfield Road, W13

### £695,000

A very rare opportunity to purchase this charming and well-maintained brick fronted Victorian house, with great potential for further development.

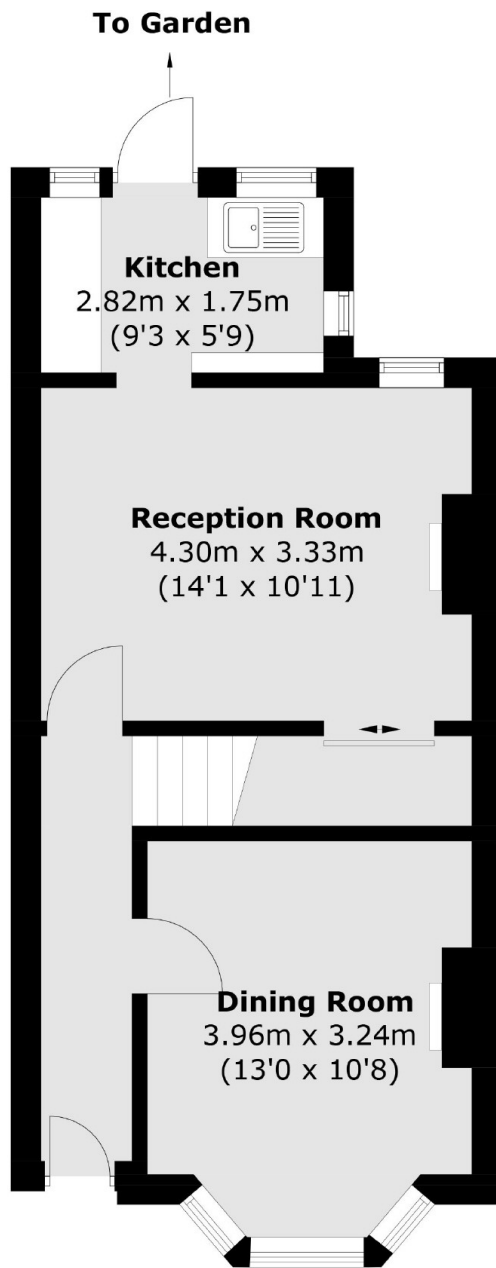
Currently comprises of two reception rooms, kitchen, two bedrooms, a bathroom and benefits from a well established rear garden. Many similar neighbouring houses have been extensively extended to the rear and loft.

Set in a popular location nestled between Northfields (Piccadilly line) and West Ealing (Elizabeth line) stations and is offered with no onward chain.

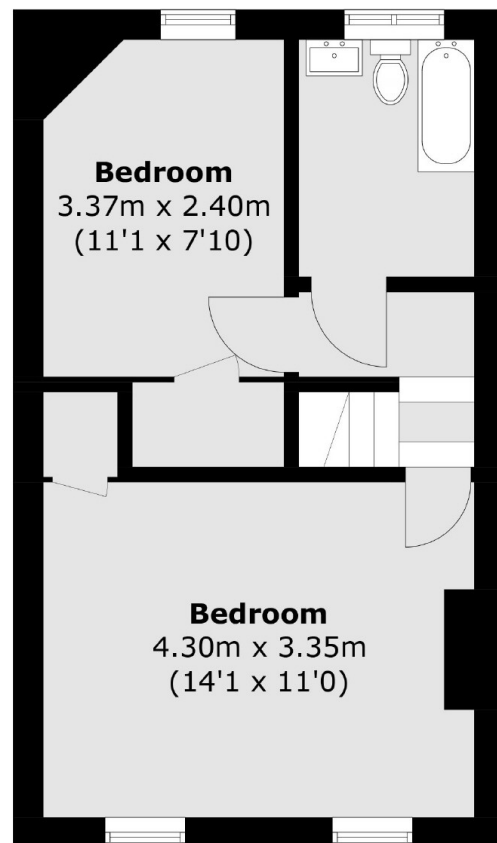
### Features

- Victorian House
- Two Bedrooms
- Two Receptions
- Potential for Extension
- Close to Transport
- No Onward Chain

Westfield Road,  
London, W13



**Ground Floor**



**First Floor**

Total area (approx.): 73.7 sq. m (793.3 sq. ft)