



Seaford Road, W13

£625,000

A two bedroom Victorian house which is priced to reflect the need for modernisation.

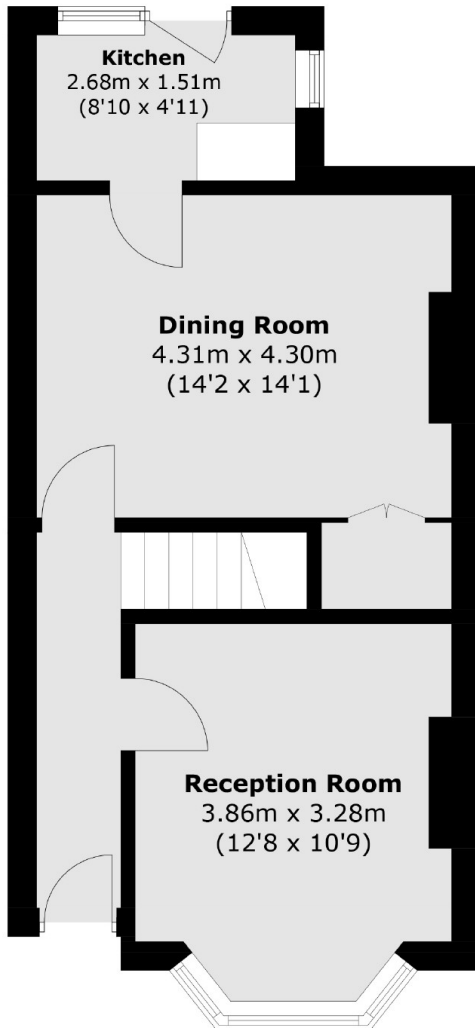
Many similar houses locally have been loft converted and rear extended.

Located close to Northfields (Piccadilly Line) and West Ealing (Elizabeth line). Offered with no onward chain.

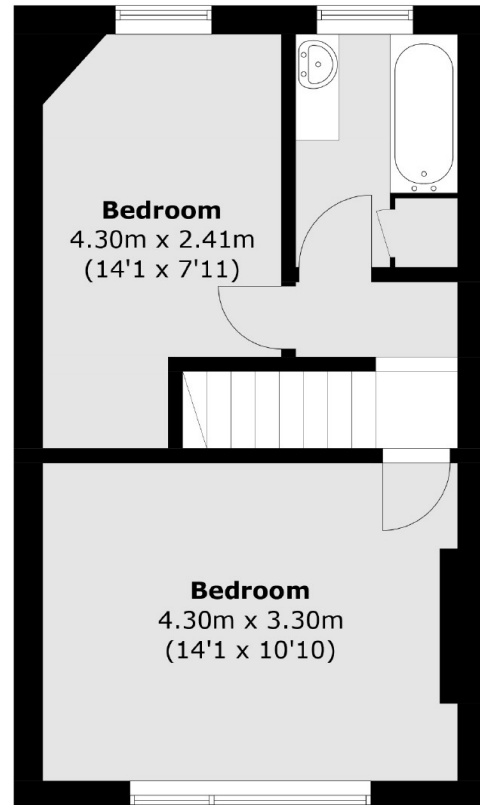
Features

- Victorian House
- Period Features
- Renovation Opportunity
- Close to Shops
- Good Transport Links
- No Onward Chain

Seaford Road,
London, W13



Ground Floor



First Floor

Total area (approx.): 72.1 sq. m (776.0 sq. ft)