



Windmill Road, W5

£595,000

This remarkable two bedroom garden flat is presented in immaculate condition throughout and enjoys a very high standard of fixtures and decoration.

Offering over 860 sq.ft, this is an ideal option for a purchaser looking to just move in and enjoy.

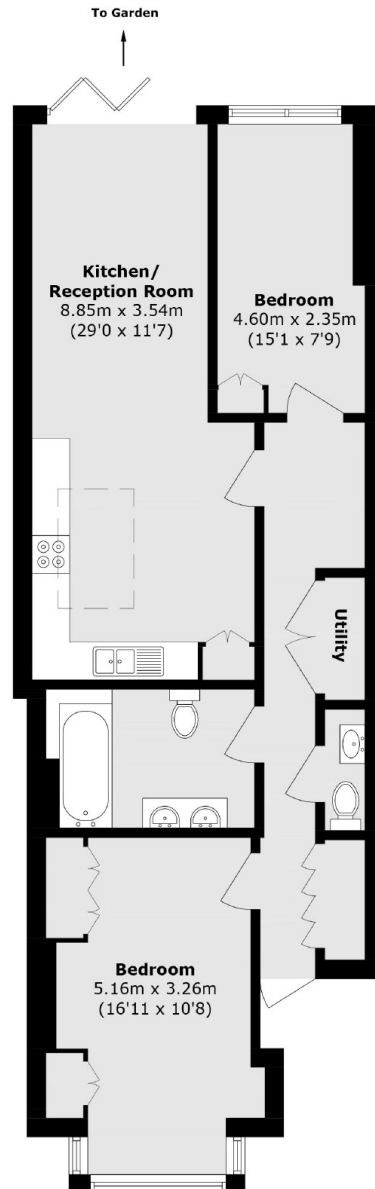
Located within walking distance of the shops and Piccadilly line station at Northfields.

Benefits from a long lease and no onward chain.

Features

- Garden Conversion
- Excellent Conditions
- 860 sq.ft
- Long Lease
- Close to Tube
- No Onward Chain

Windmill Road, London, W5



Total area (approx.): 79.9 sq. m (860.0 sq. ft)

Dexters

Northfields
140 Northfield Avenue
London
W13 9SB
Sales
020 8545 8588

Energy Rating: D. We aim to make our particulars both accurate and reliable. However they are not guaranteed; nor do they form part of an offer or contract. If you require clarification on any points then please contact us, especially if you're traveling some distance to view. Please note that appliances and heating systems have not been tested and therefore no warranties can be given as to their good working order.

 **RICS** | Regulated
Estate Agent
and Letting Agent

[dexters.co.uk](https://www.dexters.co.uk)