



Clocktower Mews, W7

£346 Per week

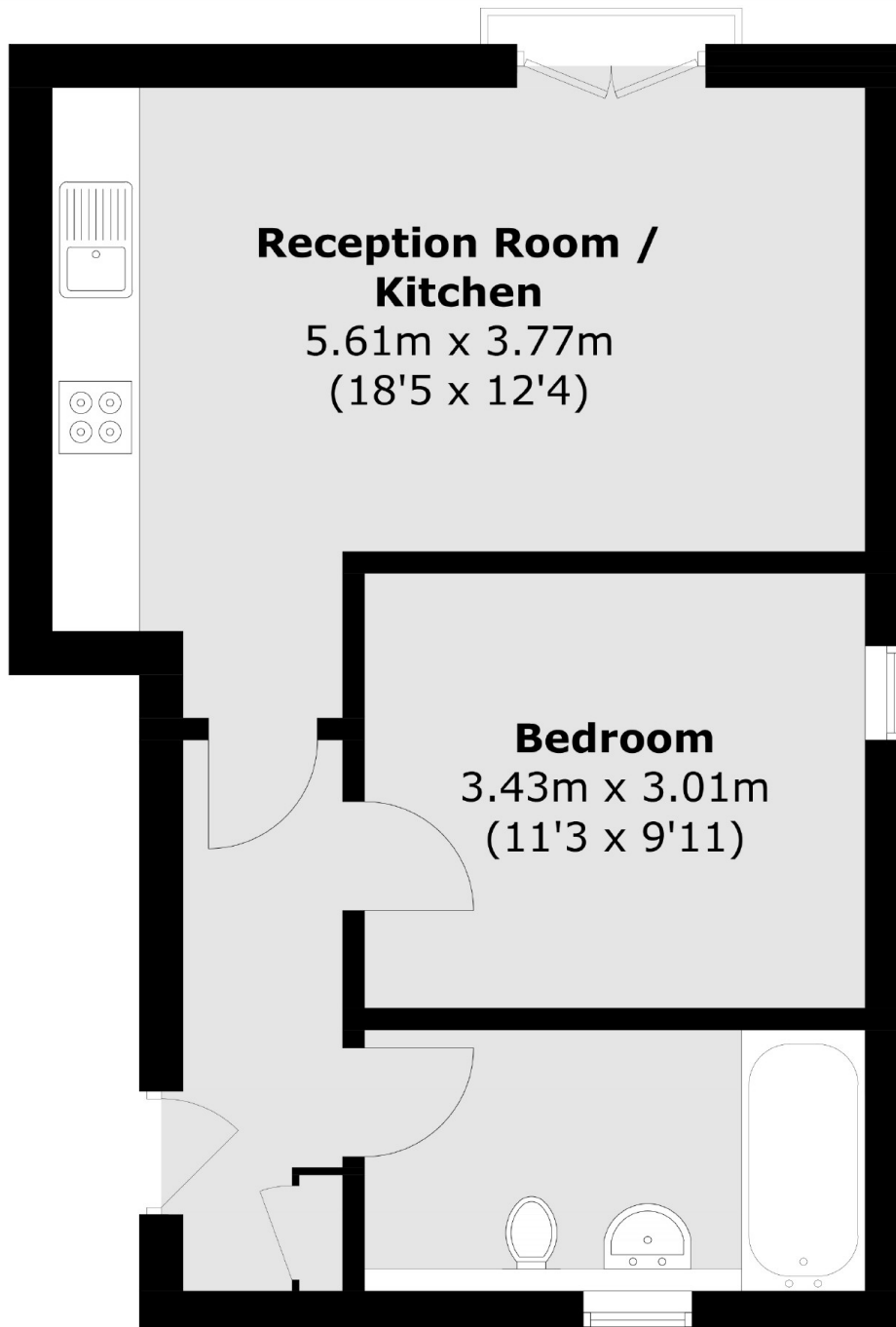
Set within Clock Tower Mews, a secure development close to local amenities, this modern one bedroom second floor flat offers a spacious open plan kitchen/reception room with Juliet balcony and a modern bathroom.

Amberley House is a new development located close to the shops, bars and restaurants of Uxbridge Road, with Hanwell Station within easy reach.

Features

- One Bedroom
- Modern
- Open Plan
- Top Floor Flat
- Juliet Balcony
- Close to Station

Clocktower Mews, London, W7



Total area (approx.): 42.7 sq. m (459.6 sq. ft)