



## Loveday Road, W13

£750 Per week

This recently refurbished and extended property features a new kitchen, three bathrooms, fresh paint, and carpets. It includes multiple living spaces, a south-facing garden, off-street parking, and a master suite.

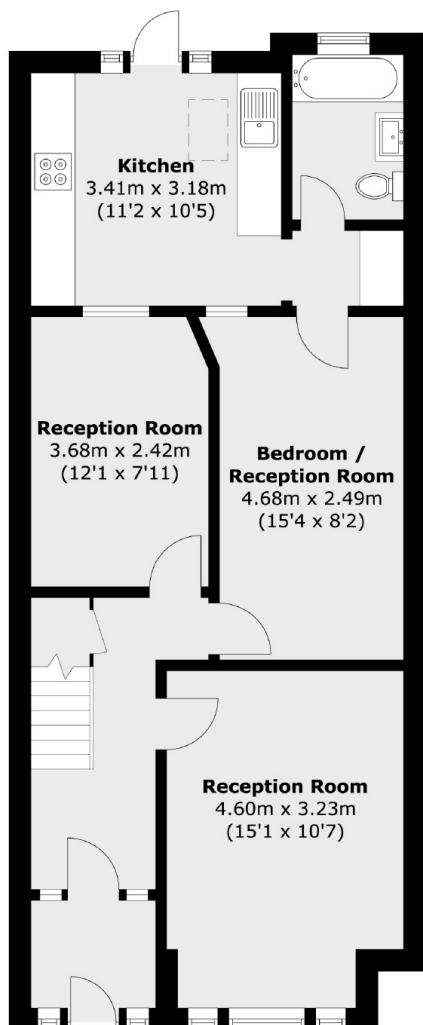
The house is located on Loveday Road in Ealing, close to Walpole and Lammas Park, and convenient for South Ealing, Northfields, West Ealing and Ealing Broadway stations.

### Features

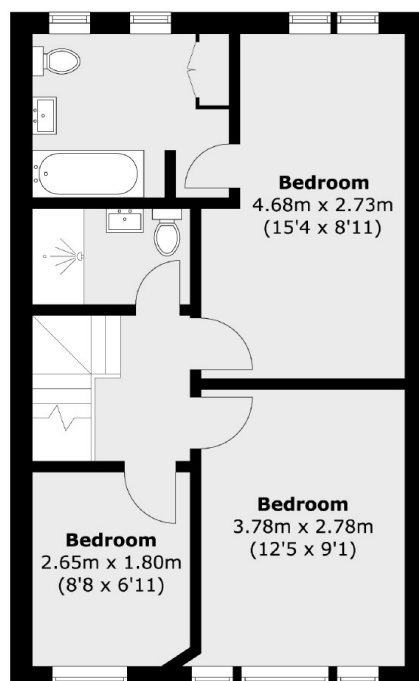
- Three Bedrooms
- Three Bathrooms
- Three Receptions
- Recently Refurbished
- Off Street Parking
- Private Garden



# Loveday Road, London, W13



**Ground Floor**



**First Floor**

Total area (approx.): 108.7 sq. m (1170 sq. ft)